

adenbrookhomes

# The Heydon

On Display with Haven Facade

13 FORRESDALE STREET, COOMERA QLD 4209



**WINNER 2020**  
Gold Coast / Northern Rivers  
Display Home  
\$300,001 – \$400,000

## THE HEYDON E | Home on Display

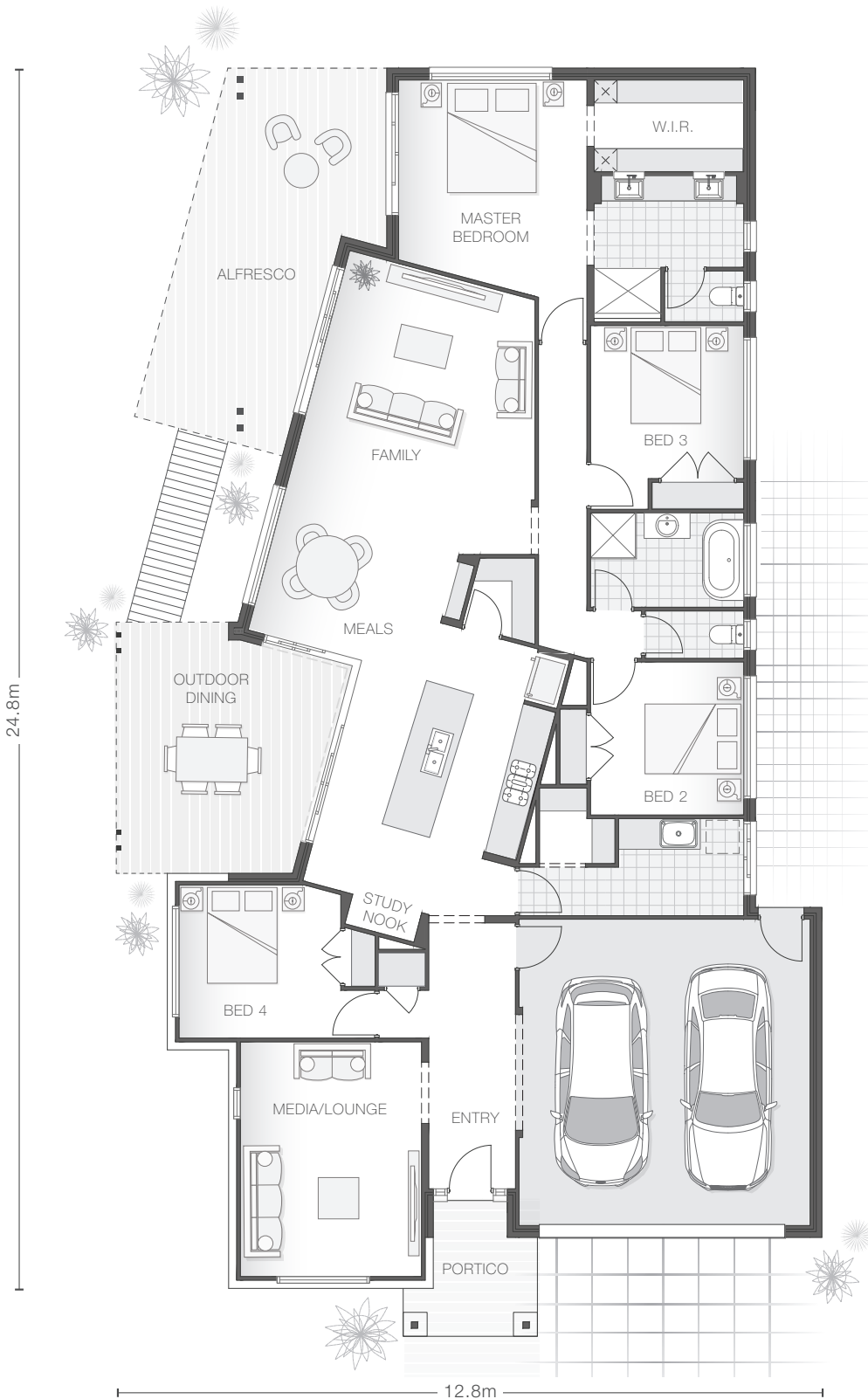
Our award-winning Heydon home design featuring the Hampton's inspired Haven facade is as unique and distinct as it is contemporary. Designed utilising unconventional angles the home is filled with character and deliberate purpose that offers surprises and style at every turn. Boasting dual alfresco areas from the main living space, this home certainly is an entertainer.

The galley style kitchen is distinguished and acts as the central hub of the home, running parallel to the family and meals area and showing off the funky, multi-purpose nooks. The impressive sky lights with LED strip lighting in the kitchen and master bathroom ensure the home is filled with natural light offering a relaxed coastal vibe. The private master retreat with ensuite and walk-in-robe has great separation from the living spaces, while the other bedrooms are well-appointed around the central entertaining zone.



# The Heydon E

Home on Display with Haven Facade 257.3m<sup>2</sup> | 27.7sq



## KEY FEATURES

- Stunning skylights with LED strip lighting in the kitchen
- Feature skylight in the master ensuite
- Immaculate parents' retreat with walk-in-robe and ensuite
- Open plan living areas and separate living zones
- Ducted air-conditioning throughout
- Practical and stylish nooks
- Hampton's inspired facade and style

## KEY DIMENSIONS

Minimum Lot Width	15.0m
Length	24.8m
Width	12.8m

## ROOM DIMENSIONS (m)

Meals	3.0 x 3.2
Family	4.2 x 4.5
Master Bedroom	3.7 x 3.5
Bedroom 2	3.0 x 3.0
Bedroom 3	3.0 x 3.0
Bedroom 4	3.2 x 3.0
Media/Lounge	3.5 x 4.6
Outdoor Dining	1.8 x 4.5
Alfresco	3.1 x 3.5

## FLOOR AREAS (m<sup>2</sup>)

Indoor Living	187.2
Outdoor Dining	7.9
Garage	37.4
Alfresco	19.3
Portico	5.5

This display includes lifestyle options which highlight features in the design. Speak with a consultant about how you can customise the base plan to suit your lifestyle.