

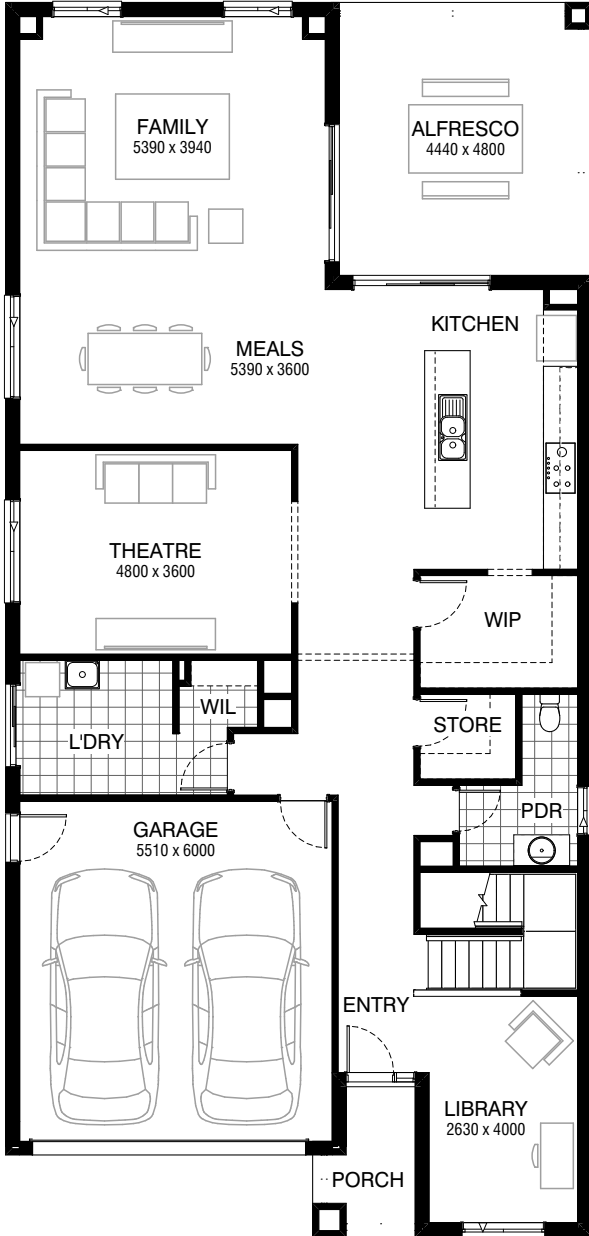
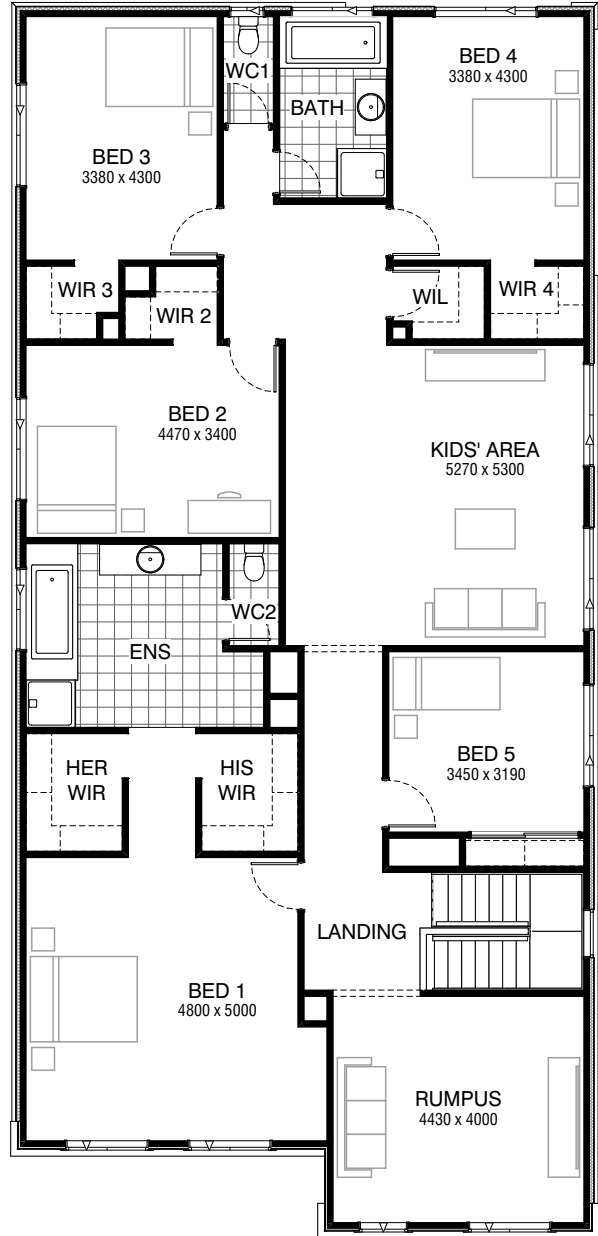


Total squares **45.5sq**

 **5**  **2.5**  **2**



GROUND FLOOR



FIRST FLOOR

Facades available:




Condor, Matisse, Monet, Aqua	Residence	361.1m ²	38.8sq
Hester, Metropolitan, Orana	Garage	36.1m ²	3.9sq
Rainforest	Porch	4.0m ²	0.4sq
Overall home width	10.31m	Alfresco	21.3m²
Overall home length	21.71m	Total	422.6m²
			45.5sq

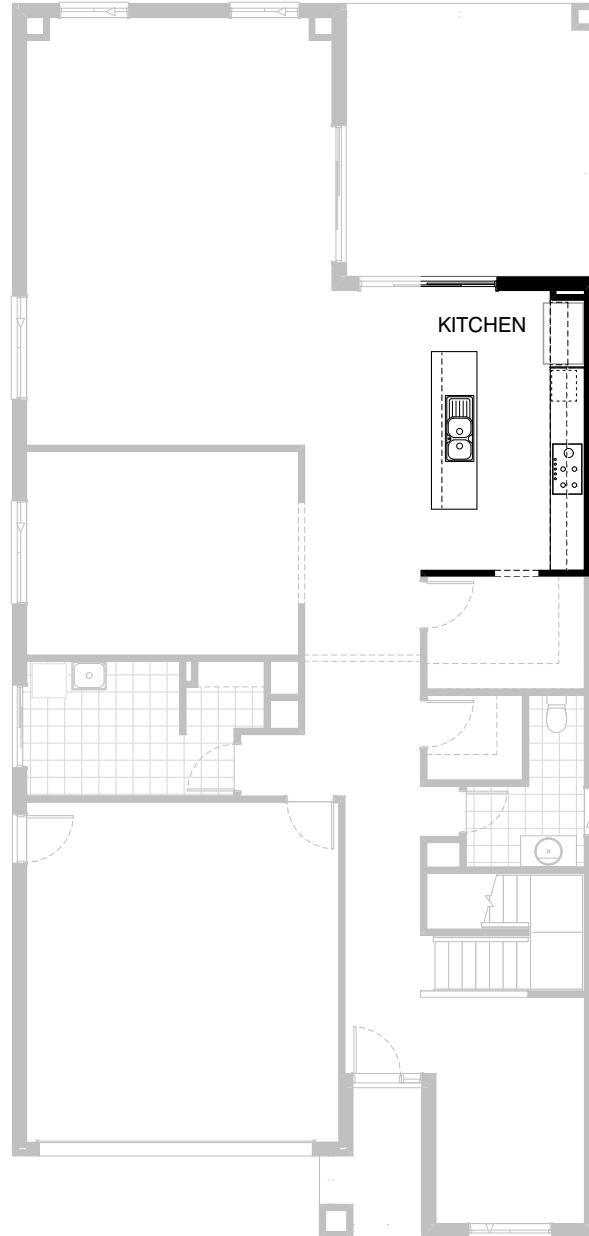
FLOORPLAN OPTIONS

All available ready-to-go floorplan options for this design can be viewed on the following pages, or visit www.burbank.com.au.

Listed details based on Condor façade floorplan (illustrated)

FLOORPLAN OPTIONS




 **5**  **2.5**  **2**

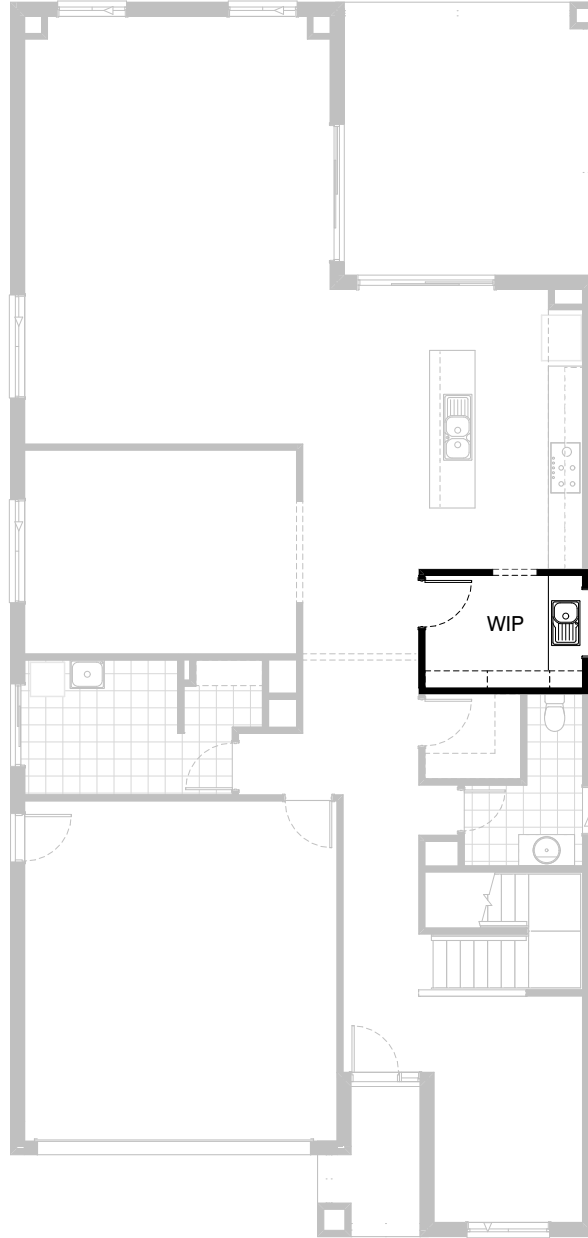


Option K-1

- Provide Kitchen Upgrade with 2no. 800mm base cabinets,
2no. 700mm base cabinets,
1no. 450mm drawer unit, 1no. 600mm pot drawers,
2no. 700mm and 2no. 600mm overhead cabinets,
1no. laminated MW. provision with pot drawer below,
1no. laminated DW. provision with additional bench top and
tiled splashback to suit.
- Provide 1no. 900mm underbench oven with 900mm gas cooktop &
retractable rangehood above.
- 1no. 1100mm laminated open shelf above refrigerator space.

FLOORPLAN OPTIONS



 **5**  **2.5**  **2**

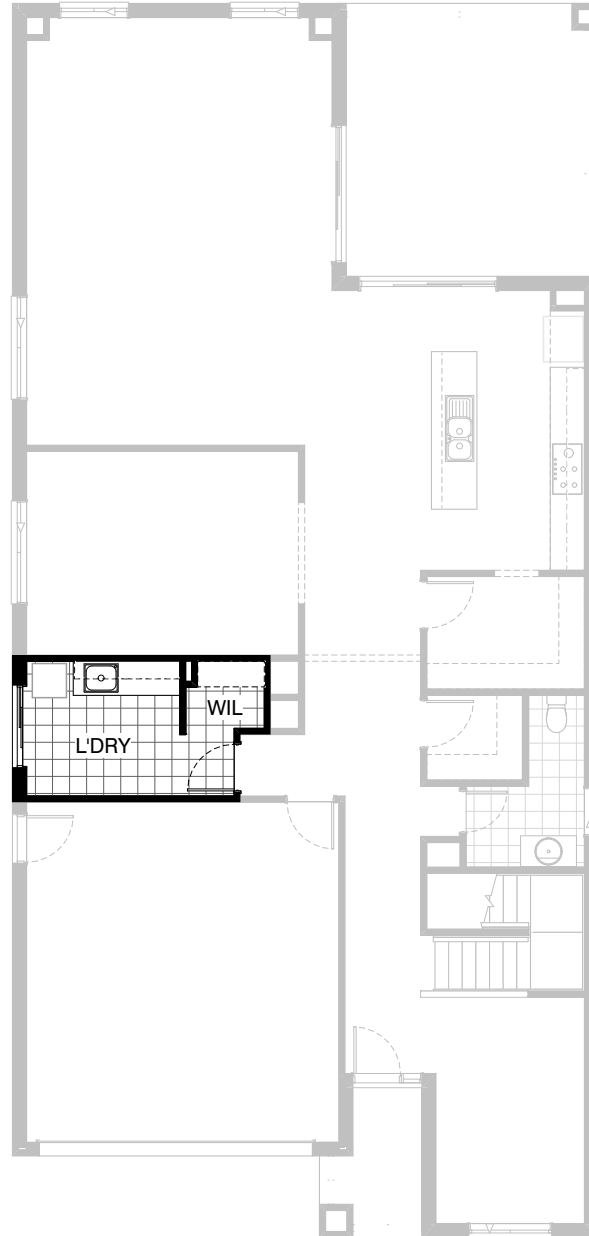


Option K-2

Provide W.I.P Upgrade with
2no. 400mm and 1no. 800mm base cabinets,
wall to wall laminated shelving to suit.
Provide additional 1no. 1200mm x 1210mm
aluminium fixed window with no bottom reveal.

FLOORPLAN OPTIONS




 **5**  **2.5**  **2**

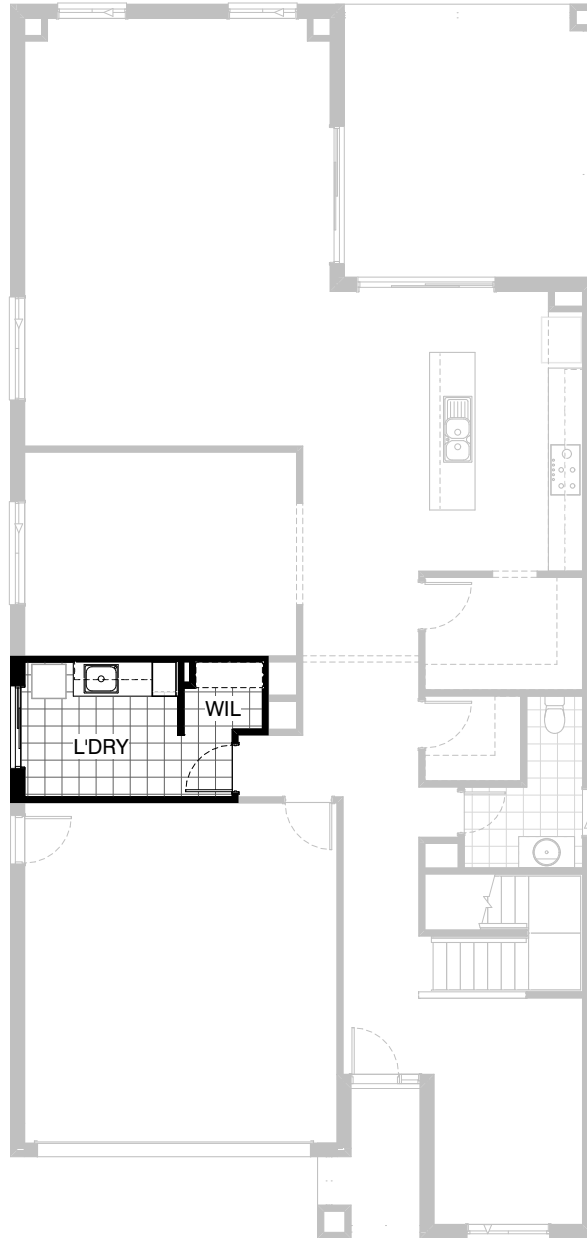


Option LD-1

Provide Laundry Upgrade with s.s. inset trough
in 32mm laminated bench top.
2no. 900mm base cabinets and 2no. 900mm overhead cabinets
and additional tiled splashback and bench top to suit.

FLOORPLAN OPTIONS

 **5**  **2.5**  **2**

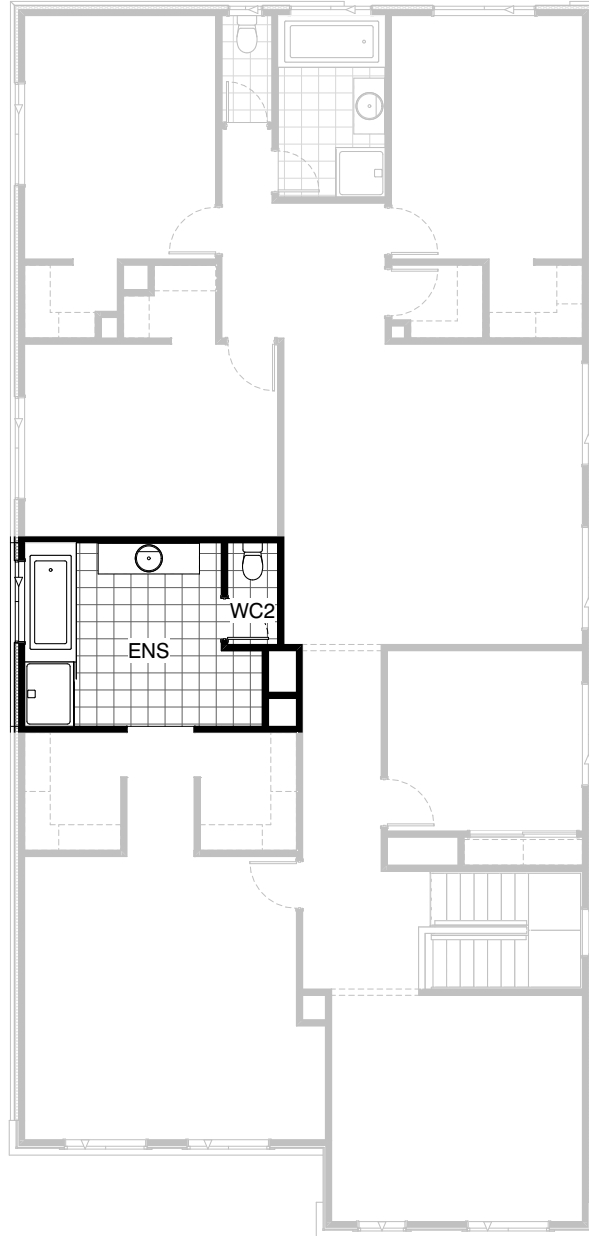


Option LD-2

Provide Laundry Upgrade with s.s. inset trough
in 32mm laminated bench top.
1no. 400mm broom cupboard.
1no. 450mm and 2no. 900mm base cabinets
and 1no. 450mm and 900mm overhead cabinets
and additional tiled splashback and bench top to suit.

FLOORPLAN OPTIONS




 **5**  **2.5**  **2**

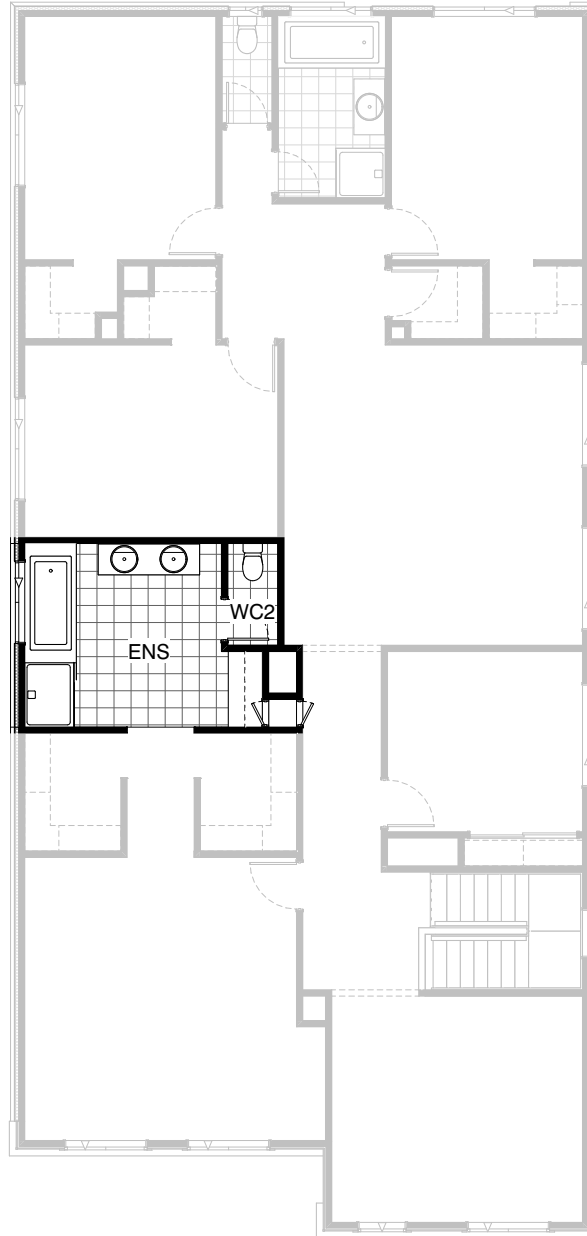


Option ENS-1 FF

Provide Ensuite Upgrade with additional
1200mm x 900mm polymarble shower base
in lieu of standard.

FLOORPLAN OPTIONS

 **5**  **2.5**  **2**

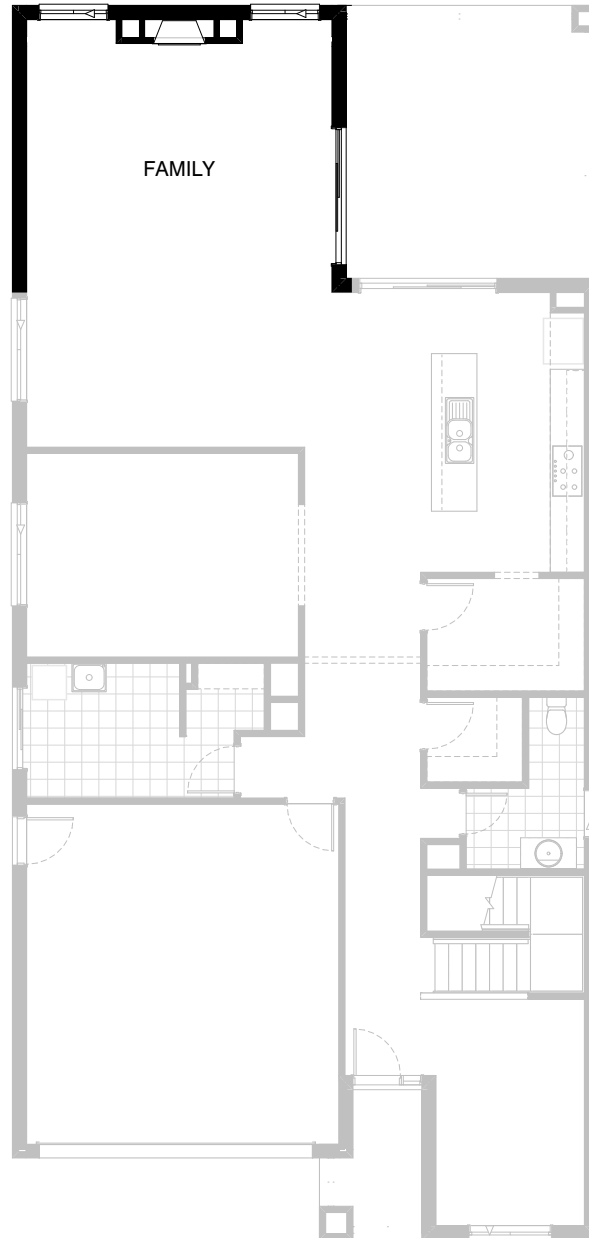


Option ENS-2 FF

Provide Ensuite Upgrade with additional 1200mm x 900mm polymarble shower base in lieu of standard and 1782mm wide vanity unit with double bowls. Provide additional Laundry chute with 2no. 420mm doors. Provide 1no. 800mm base cabinet, 1no. 450mm drawer unit, 1no. 800mm overhead cabinet and 1no. 450mm laminated open shelf with additional bench top and tiled splashback to suit.

FLOORPLAN OPTIONS



 **5**  **2.5**  **2**

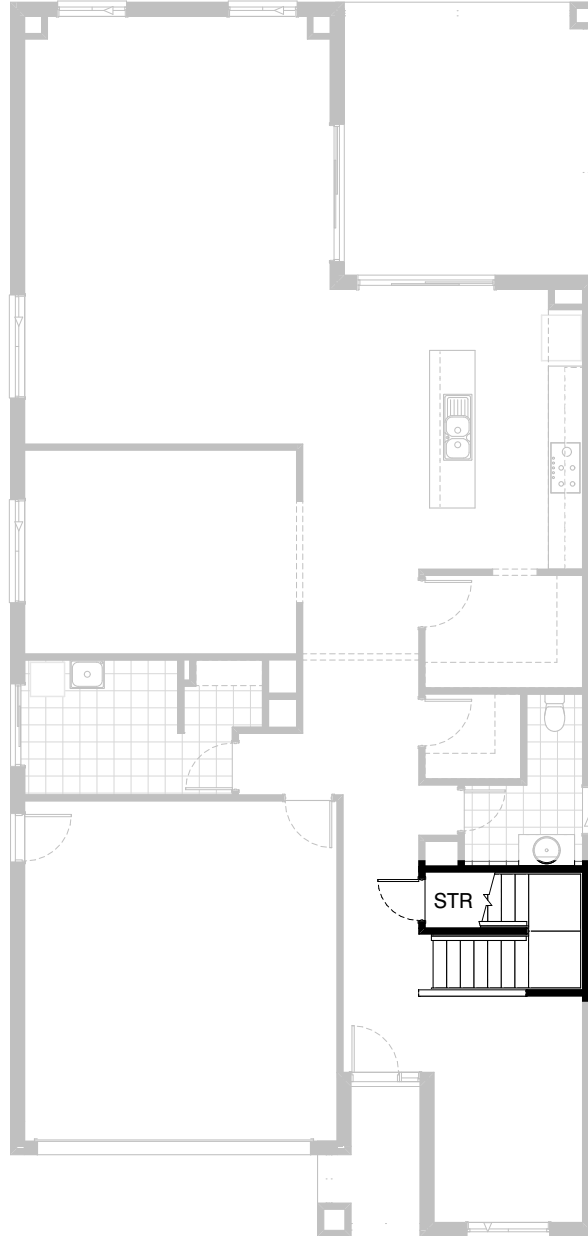


Option IP1-1

Provide Jetmaster 3x Series gas fireplace,
400mm off floor level in a 1400mm x 420mm
boxed out plaster wall with a 4 sided black
fascia to Family room rear wall.
Relocate plumbing stack, void and 2no.
Family room windows to suit.

FLOORPLAN OPTIONS

 **5**  **2.5**  **2**



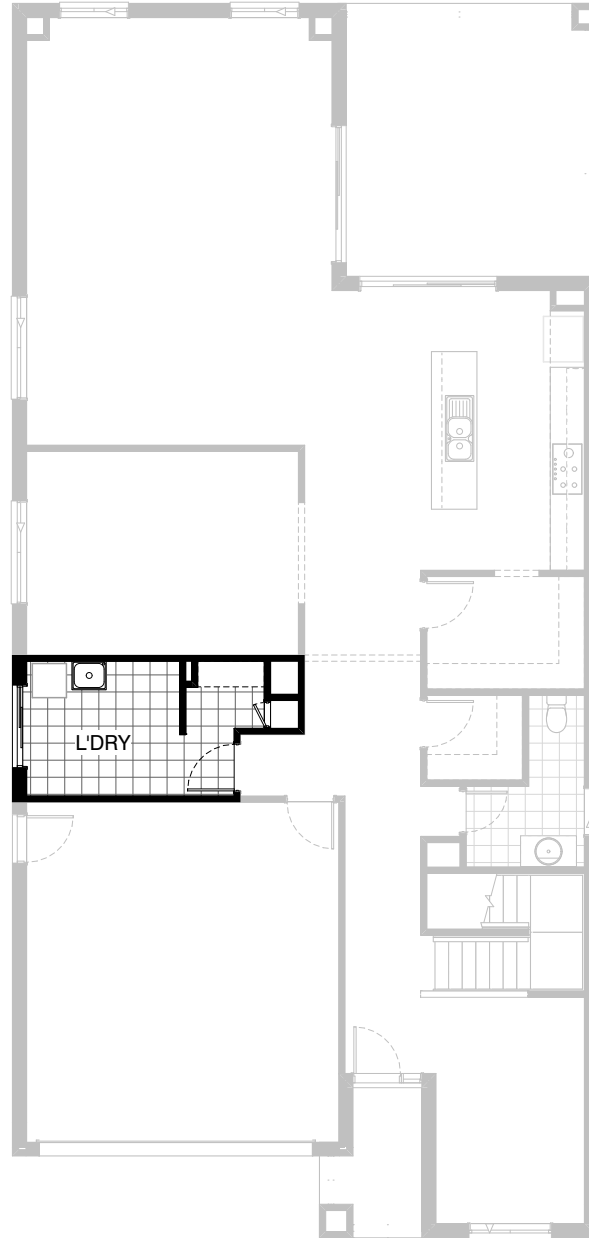
Option IP1-2

Provide Store room below stair including 720mm flush panel hinged door, plaster lined walls and raked plaster ceiling on battens with square set cornice including additional light point.

NOTE: Flooring not included

FLOORPLAN OPTIONS




 **5**  **2.5**  **2**

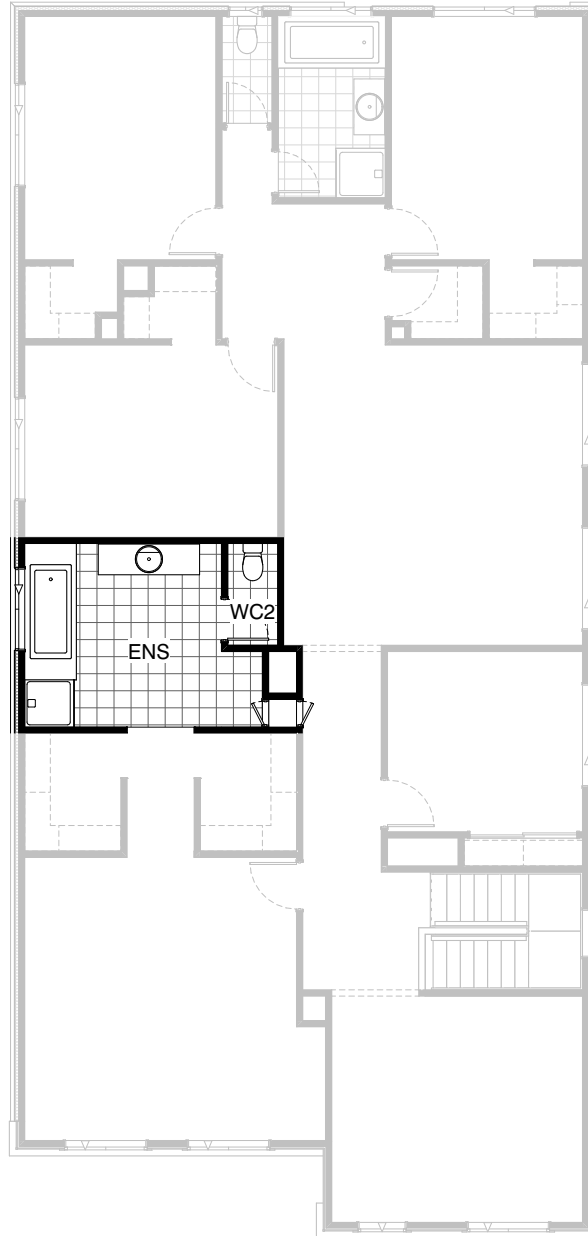


Option IP1-3 GF

Provide Laundry chute.

FLOORPLAN OPTIONS




 **5**  **2.5**  **2**

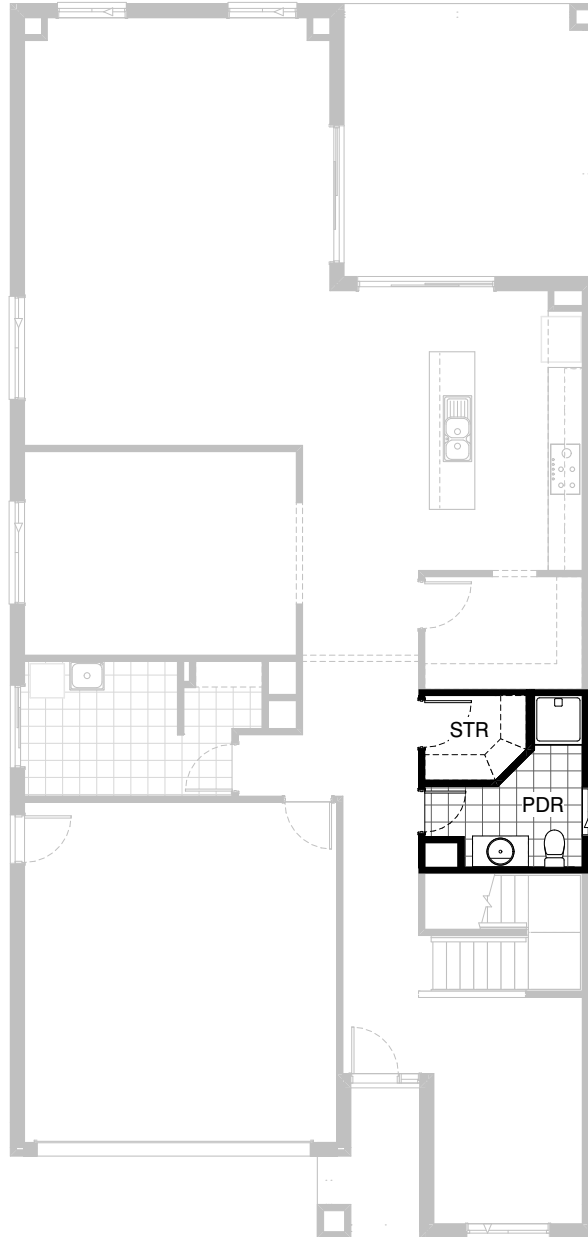


Option IP1-3 FF

Provide Laundry chute.

FLOORPLAN OPTIONS




 **5**  **2.5**  **2**

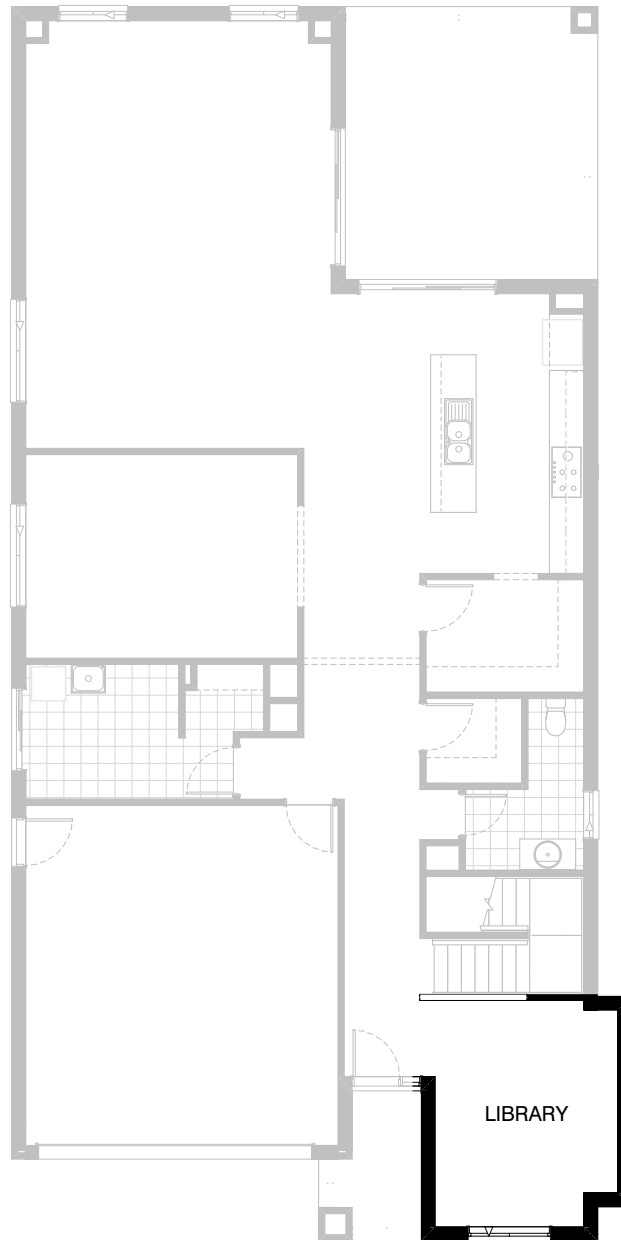


Option IP1-4

Provide Powder Upgrade with additional
900mm x 900mm polymarble shower base.
Relocate toilet and vanity basin to suit and
increase Store by 100mm and angle stud wall to suit.

FLOORPLAN OPTIONS



 **5**  **2.5**  **2**

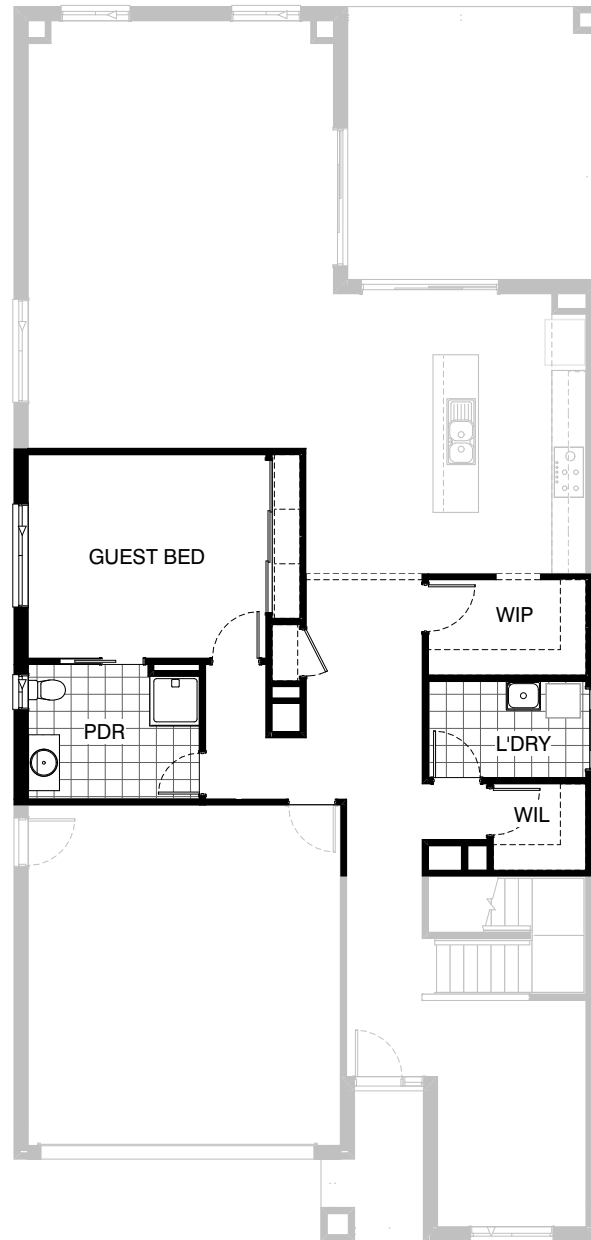


Option IP1-5

Provide Library Option by extending Library wall width by 600mm with brick parapet flat roof above.
Increase area by 2.23m²
Increases width by 600mm.

FLOORPLAN OPTIONS

 **5**  **2.5**  **2**



Option IP1-6


Provide Guest bedroom Option in lieu of Theatre including additional 1no. sliding robe doors and plaster lined robe with 1no. hanging rail and shelf.

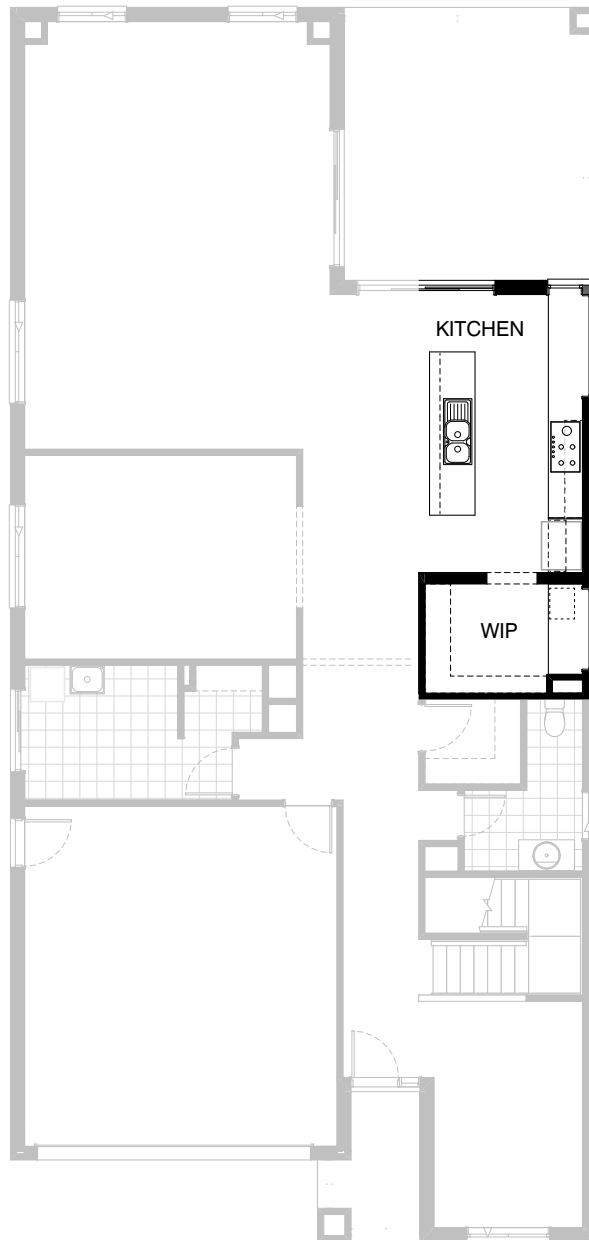
Relocate Laundry and W.I.L with Powder and provide additional 1no. 900mm x 900mm polymarble shower base, 1no. 1027mm x 610mm aluminium sliding window in lieu of standard 1no. 1800mm x 850mm aluminium sliding window and additional 1no. 720mm cavity sliding door.

Delete Store room and provide additional Linen cupboard with 1no. 820mm flush panel hinged door with 4no. 450mm deep shelves, additional shelving and 1no. 820mm flush panel hinged door to W.I.L and reduce W.I.P by 300mm.

NOTE:- This Option cannot be used with Option K-2.

FLOORPLAN OPTIONS

 **5**  **2.5**  **2**



Option IP1-7

Provide Kitchen and Butlers Pantry Upgrade Option with including extending Butlers 30mm into Kitchen space and provide 180mm timber stud wall to entry with standard opening and 300mm and 450mm open shelves to suit.

Provide 1no. 600mm and 4no. 800mm and 2no. 900mm base cabinets, 1no. 450mm drawer unit, 1no. 800mm overhead cabinet and




Provide 1no. 900mm underbench oven with 900mm gas cooktop & integrated rangehood above.

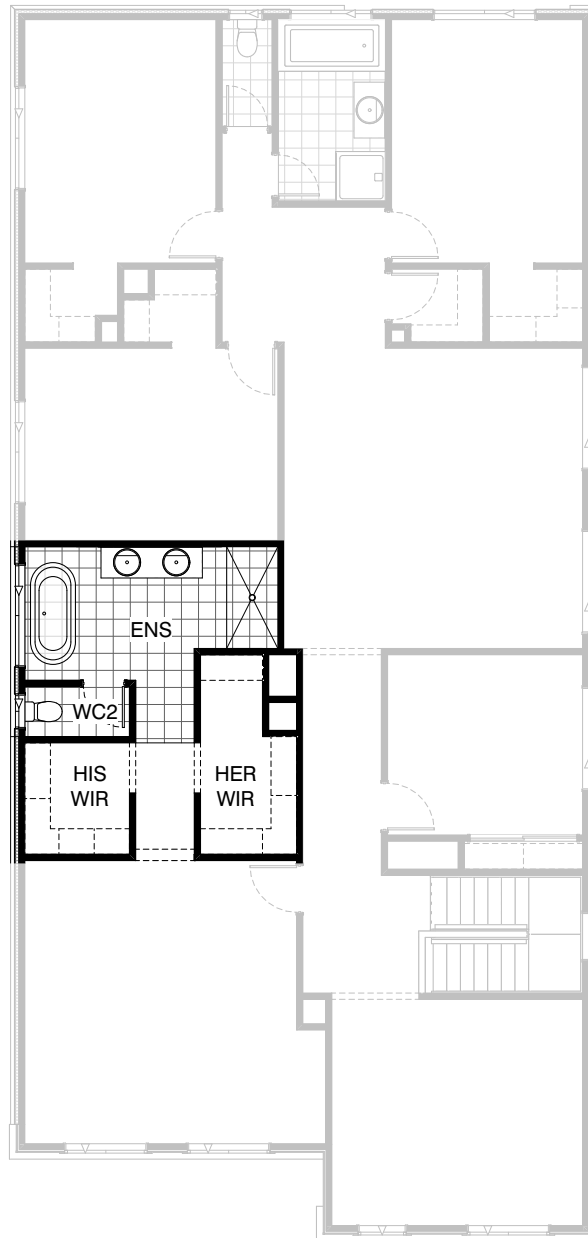
1no. laminated MW. provision with pot drawer below and 1no. DW. provision. 1no. 900mm laminated open shelf above refrigerator space with 16mm laminated end panel.

Provide 1no. 1200mm x 1810mm BQ fixed aluminium window with no bottom reveal and 1no. 1200mm x 610mm BQ fixed aluminium window with no bottom reveal to Kitchen splashback area.

Provide 1no. 1200mm x 1450mm BQ fixed aluminium window with no bottom reveal to Butlers Pantry splashback area.

FLOORPLAN OPTIONS




 **5**  **2.5**  **2**

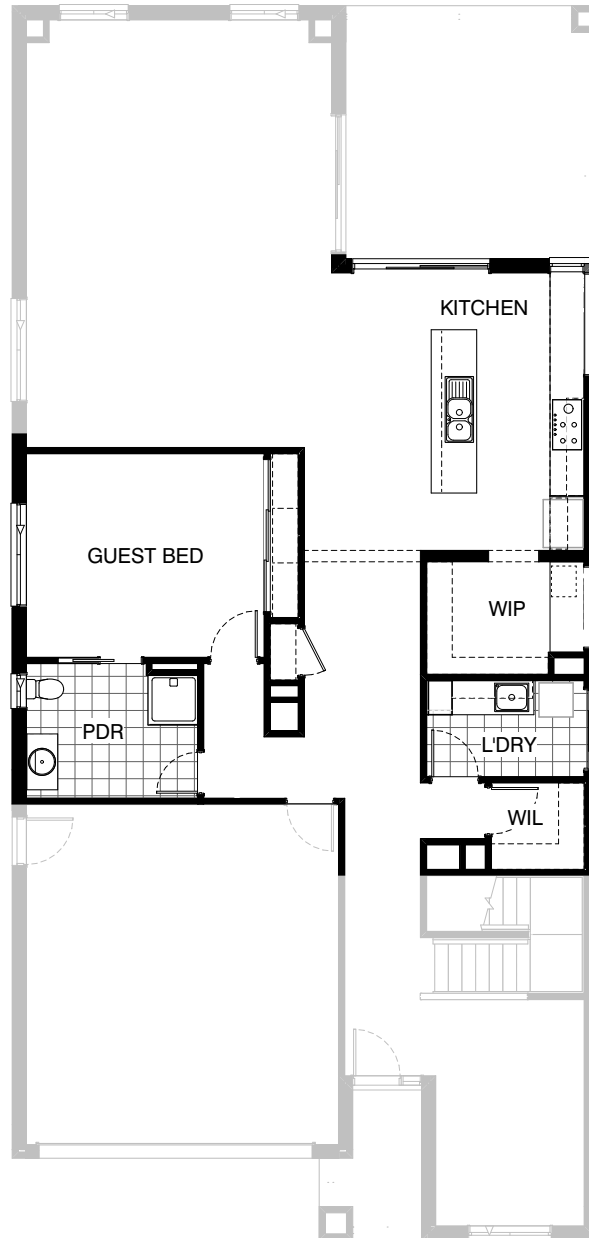


Option IP1-8 FF

Provide Ensuite and W.I.R Upgrade including re-design to suit.
Reduce His W.I.R and relocate WC to external wall and provide additional 1027mm x 610mm aluminium sliding window.
Increase Hers W.I.R into Ensuite and provide additional 450mm shelf and hanging rail.
Provide 1800mm x 900mm tiled shower base and 1782mm wide vanity unit with double bowls in lieu of standard and provide freestanding bath tub.
Provide 1200mm x 1810mm aluminium sliding window to Ensuite in lieu of standard.

FLOORPLAN OPTIONS




 **5**  **2.5**  **2**

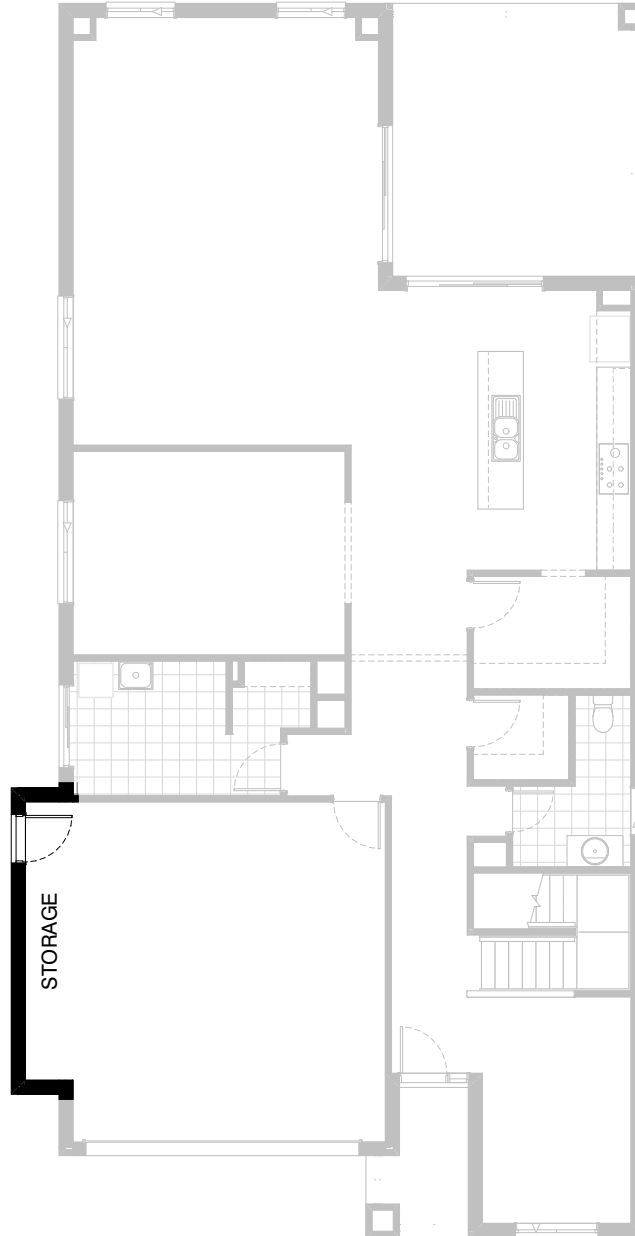


Option IP1-9 GF

- Provide Guest bedroom Option in lieu of Theatre including additional 1no. sliding robe doors and plaster lined robe with 1no. hanging rail and shelf.
- Relocate Laundry and W.I.L with Powder and provide additional 1no. 900mm x 900mm polymarble shower base, 1no. 1027mm x 610mm aluminium sliding window in lieu of standard 1no. 1800mm x 850mm aluminium sliding window and additional 1no. 720mm cavity sliding door.
- Delete Store room and provide additional Linen cupboard with 1no. 820mm flush panel hinged door with 4no. 450mm deep shelves, additional shelving and 1no. 820mm flush panel hinged door to W.I.L.
- Provide Kitchen and WIP Upgrade Option with including 180mm timber stud wall to WIP with standard opening and 300mm and 450mm open shelves to suit. Provide 1no. laminated MW. provision with pot drawer below & 1no. 900mm base cupboard to W.I.P
- Provide 1no. 600mm and 4no. 800mm and 1no. 900mm base cabinets, 1no. 450mm drawer unit, 1no. 800mm overhead cabinet and Provide 1no. 900mm underbench oven with 900mm gas cooktop & integrated rangehood above.
- Provide 1no. DW. provision and 1no. 900mm laminated open shelf above refrigerator space with 16mm laminated end panel.
- Provide 1no. 1200mm x 1810mm fixed aluminium window with no bottom reveal and 1no. 1200mm x 610mm fixed aluminium window with no bottom reveal to Kitchen splashback area.
- Provide 1no. 1200mm x 1450mm fixed aluminium window with no bottom reveal to WIP splashback area.
- Alfresco area reduced by 360mm due to Kitchen configuration.

FLOORPLAN OPTIONS




 **5**  **2.5**  **2**

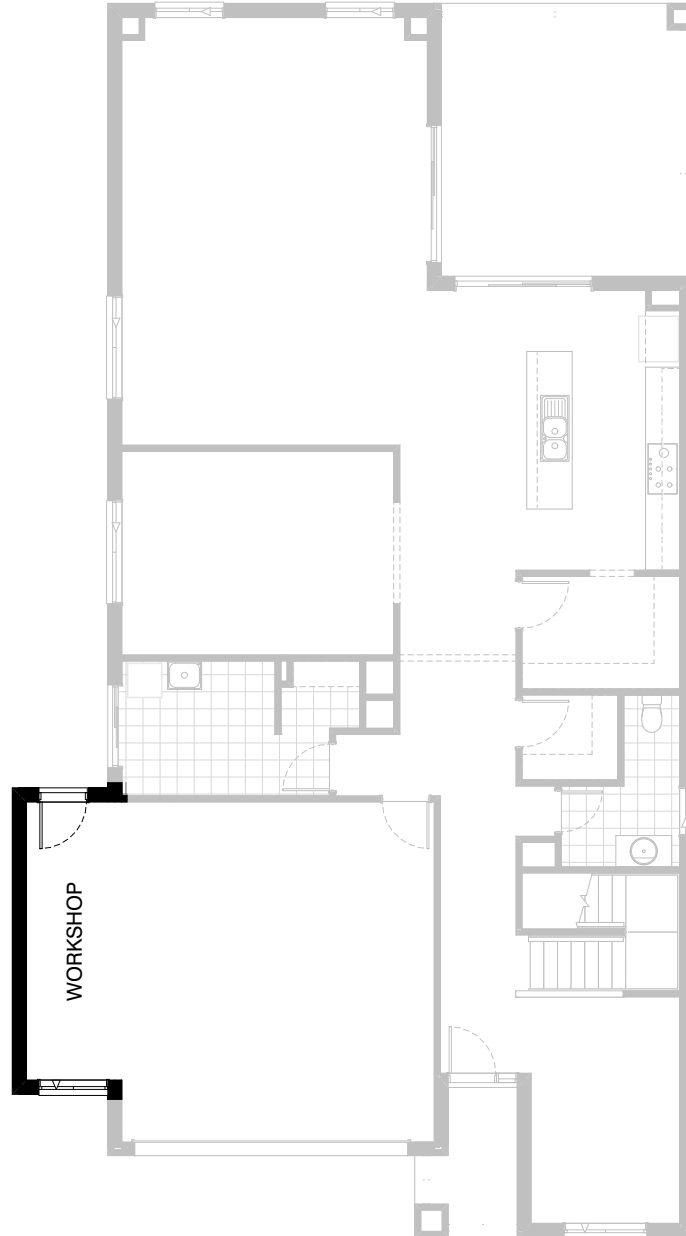


Option G-1

Provide extension to Garage to create additional Storage area.
Provide pitched roof and lightweight cladding ('Scyon Stria') above.
Increases area by 4.53m².
Increases width by 840mm.

FLOORPLAN OPTIONS

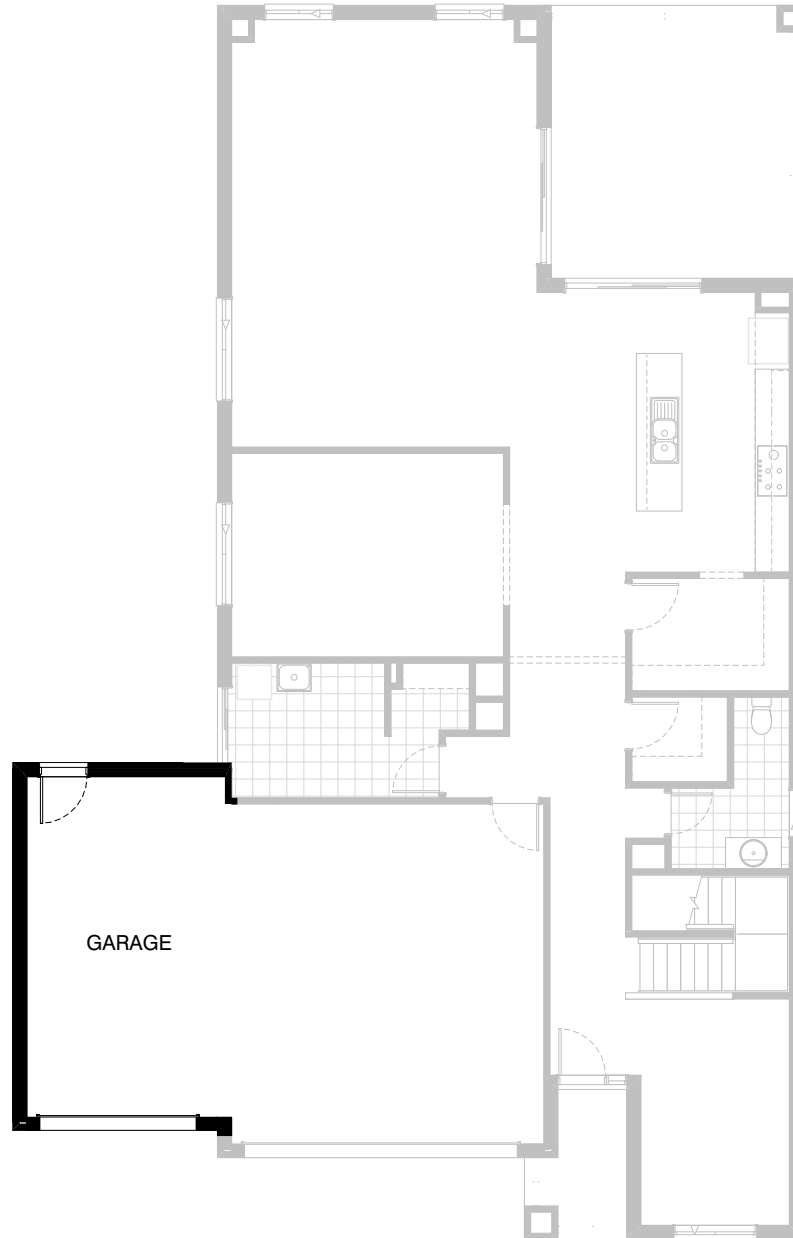
 **5**  **2.5**  **2**



Option G-2

Provide extension to Garage to create Workshop area including additional 2057 x 1210 feature aluminium awning window.
Provide pitched roof and lightweight cladding ('Scyon Stria') above.
Increases area by 9.46m².
Increases width by 1680mm.




FLOORPLAN OPTIONS

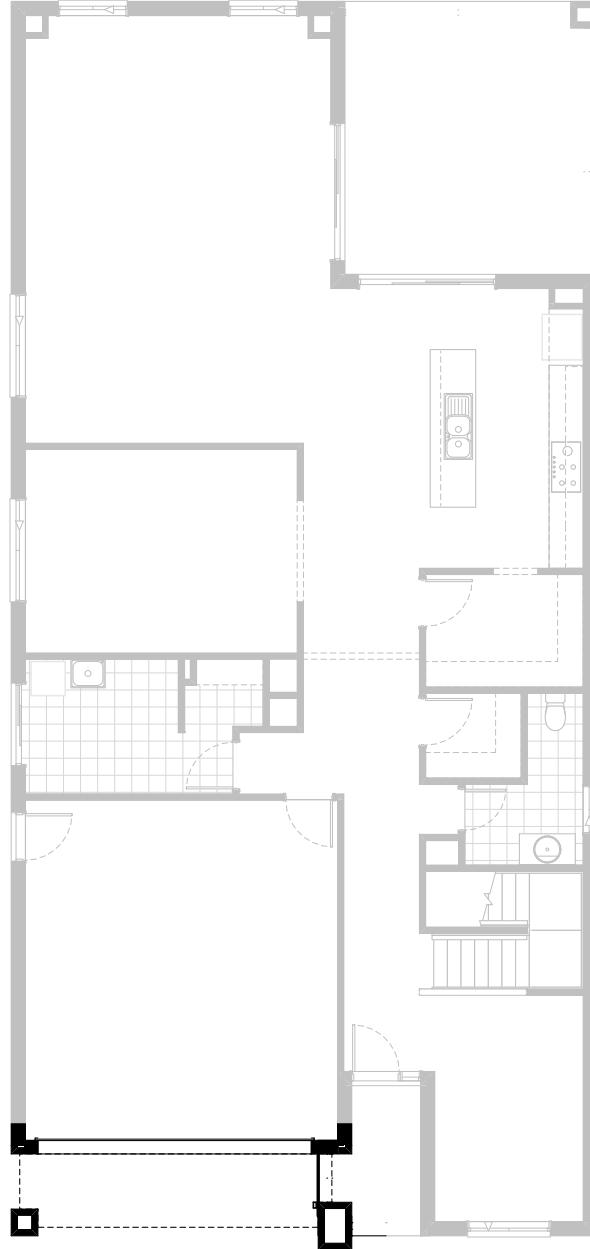


Option G-3

Provide triple car Garage including additional
Garage door as per colour selection.
Provide pitched roof and lightweight cladding
(‘Scyon Stria’) above.
Increases area by 23.29m².
Increases width by 3600mm.

FLOORPLAN OPTIONS

 **5**  **2.5**  **2**



Option BA-1 GF

Provide Balcony Option.

FLOORPLAN OPTIONS

 **5**  **2.5**  **2**



Option BA-1 FF

Provide Balcony Option to Bed 1.