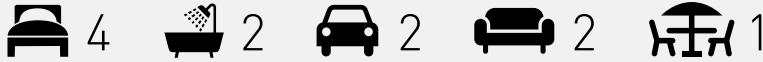


# INSPIRATIONS SERIES

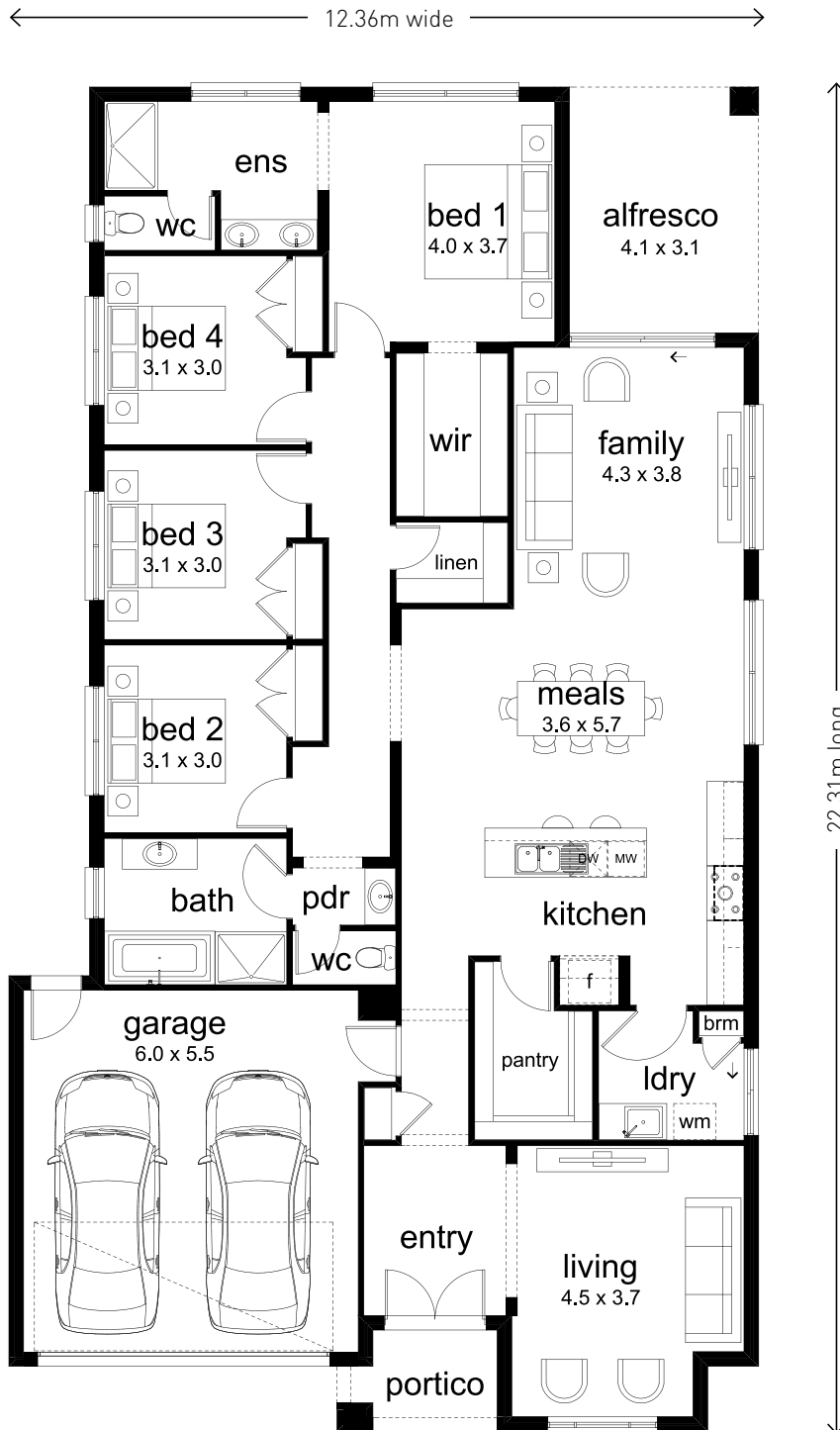
## ROBINVALE 273



FITS LOT DEPTH OF **30M**

FITS LOT WIDTHS OF **14M**

Total	249.38m <sup>2</sup>	26.84sq
Living	195.54m <sup>2</sup>	21.05sq
Portico	4.08m <sup>2</sup>	0.44sq
Alfresco	12.73m <sup>2</sup>	1.37sq
Garage	37.04m <sup>2</sup>	3.99sq



Go to [dennisfamily.com.au](http://dennisfamily.com.au) or call **1800 DENNIS** for more information.

Lot width and depth subject to fall of land. Floorplans and dimensions based on Classic façade and may alter depending on façade chosen and may not reflect developer guidelines. Copyright Dennis Family Intellectual Property Pty Ltd © 2020. Images may include optional, additional cost upgrades such as façade render, feature tiles, driveway, garage doors and concrete paths, and items not supplied by Dennis Family Homes such as landscaping, decking, water features, retaining walls, window furnishings, light fittings, furniture and decorator items unless otherwise specified. Dennis Family Homes Pty Ltd ACN 056254249 is a registered building practitioner. Building licence number CDB-U 49195 (Vic) and 173511C (NSW).



**dennis family homes**

a family building homes for families™

# INSPIRATIONS SERIES

## ROBINVALE 273 facade options



Boardwalk facade



Boulevard facade



Classic facade



Resort facade



Savannah facade



Tempo facade

Go to [dennisfamily.com.au](https://dennisfamily.com.au) or call **1800 DENNIS** for more information.

Lot width and depth subject to fall of land. Floorplans and dimensions based on Classic façade and may alter depending on façade chosen and may not reflect developer guidelines. Copyright Dennis Family Intellectual Property Pty Ltd © 2020. Images may include optional, additional cost upgrades such as façade render, feature tiles, driveway, garage doors and concrete paths, and items not supplied by Dennis Family Homes such as landscaping, decking, water features, retaining walls, window furnishings, light fittings, furniture and decorator items unless otherwise specified. Dennis Family Homes Pty Ltd ACN 056254249 is a registered building practitioner. Building licence number CDB-U 49195 (Vic) and 173511C (NSW).



**dennis family homes**

a family building homes for families™

# INSPIRATIONS SERIES

## ROBINVALE 273 facade options



Verve facade



Vogue facade



Hamptons facade

Go to [dennisfamily.com.au](https://dennisfamily.com.au) or call **1800 DENNIS** for more information.

Lot width and depth subject to fall of land. Floorplans and dimensions based on Classic facade and may alter depending on facade chosen and may not reflect developer guidelines. Copyright Dennis Family Intellectual Property Pty Ltd © 2020. Images may include optional, additional cost upgrades such as facade render, feature tiles, driveway, garage doors and concrete paths, and items not supplied by Dennis Family Homes such as landscaping, decking, water features, retaining walls, window furnishings, light fittings, furniture and decorator items unless otherwise specified. Dennis Family Homes Pty Ltd ACN 056254249 is a registered building practitioner. Building licence number CDB-U 49195 (Vic) and 173511C (NSW).



**dennis family homes**

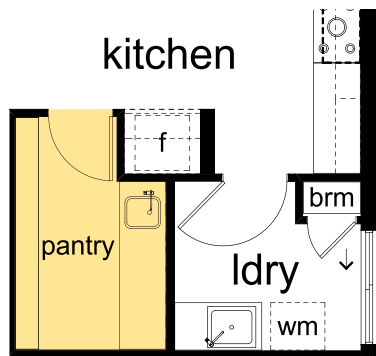
a family building homes for families™

# INSPIRATIONS SERIES

## ROBINVALE 273 pantry options

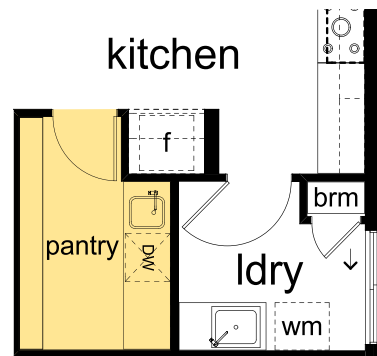
### PANTRY 1

Includes single bowl sink.



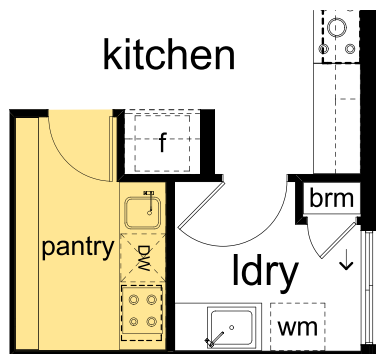
### PANTRY 2

Includes single bowl sink and provision for dishwasher.



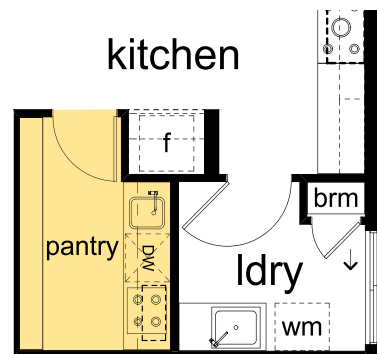
### PANTRY 3

Includes gas cooktop, canopy rangehood, single bowl sink and provision for dishwasher.



### PANTRY 4

Includes a gas cooktop, concealed rangehood, single bowl sink and provision for a dishwasher.



Go to [dennisfamily.com.au](http://dennisfamily.com.au) or call **1800 DENNIS** for more information.

Lot width and depth subject to fall of land. Floorplans and dimensions based on Classic façade and may alter depending on façade chosen and may not reflect developer guidelines. Copyright Dennis Family Intellectual Property Pty Ltd © 2020. Images may include optional, additional cost upgrades such as façade render, feature tiles, driveway, garage doors and concrete paths, and items not supplied by Dennis Family Homes such as landscaping, decking, water features, retaining walls, window furnishings, light fittings, furniture and decorator items unless otherwise specified. Dennis Family Homes Pty Ltd ACN 056254249 is a registered building practitioner. Building licence number CDB-U 49195 (Vic) and 173511C (NSW).



**dennis family homes**

a family building homes for families™