

INSPIRATIONS SERIES

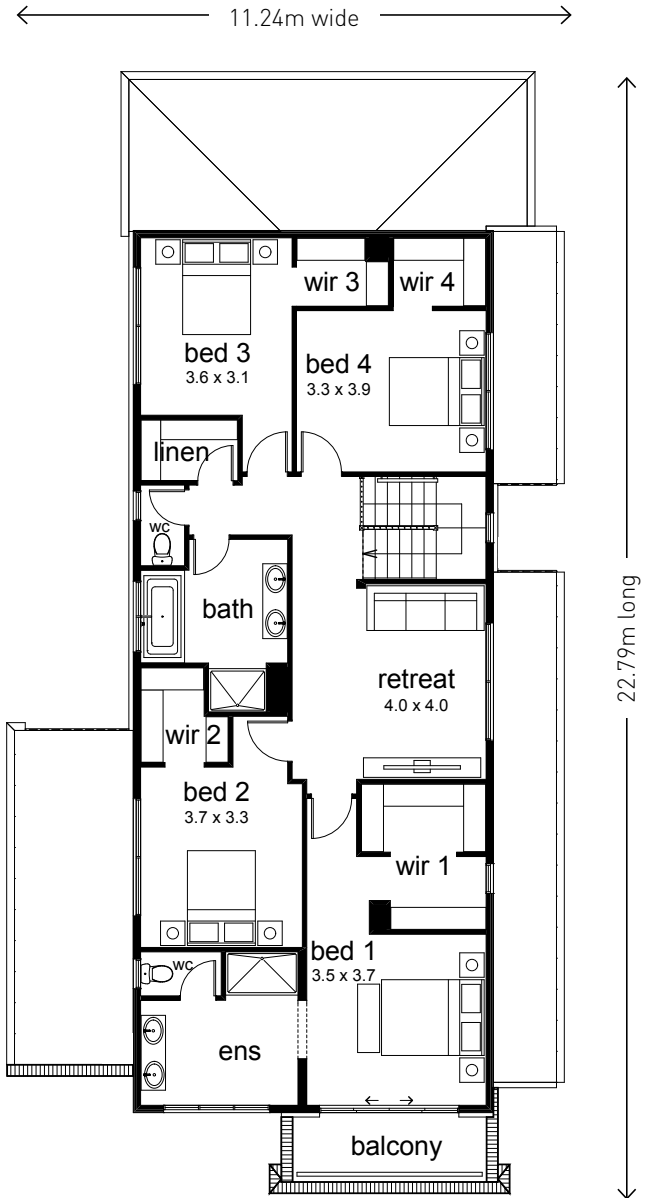
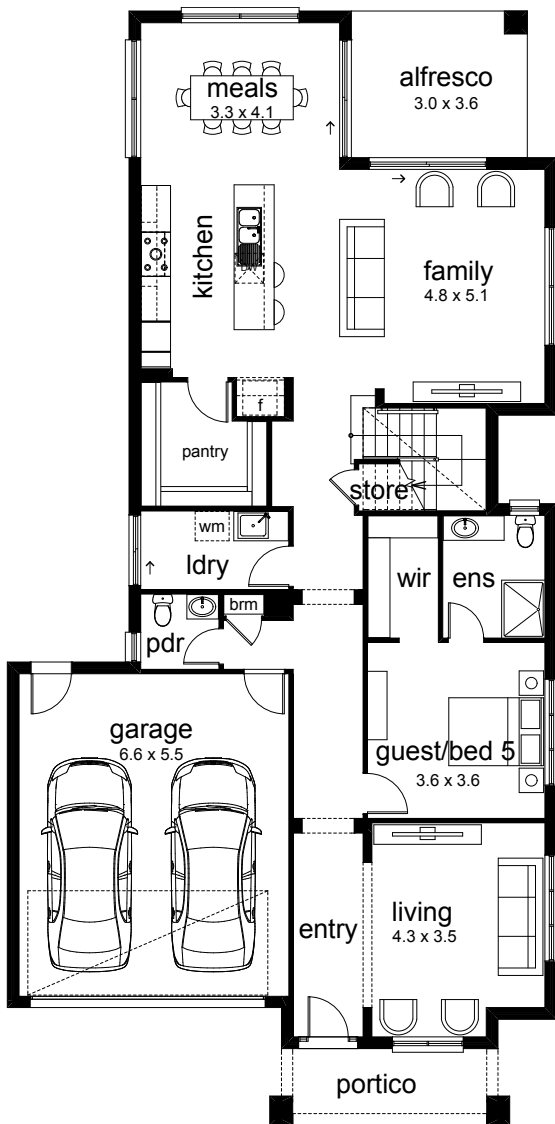
PATTERSON 363



FITS LOT DEPTH OF **30M**

FITS LOT WIDTHS OF **12.5M**

Total	341.09m ²	36.71sq
Living	275.96m ²	29.70sq
Portico	7.19m ²	0.77sq
Alfresco	10.80m ²	1.16sq
Garage	39.94m ²	4.30sq



Go to dennisfamily.com.au or call **1800 DENNIS** for more information.

Lot width and depth subject to fall of land. Floorplans and dimensions based on Classic façade and may alter depending on façade chosen and may not reflect developer guidelines. Copyright Dennis Family Intellectual Property Pty Ltd © 2020. Images may include optional, additional cost upgrades such as façade render, feature tiles, driveway, garage doors and concrete paths, and items not supplied by Dennis Family Homes such as landscaping, decking, water features, retaining walls, window furnishings, light fittings, furniture and decorator items unless otherwise specified. Dennis Family Homes Pty Ltd ACN 056254249 is a registered building practitioner. Building licence number CDB-U 49195 (Vic) and 173511C (NSW).



INSPIRATIONS SERIES

PATTERSON 363 facade options



Classic facade



Hamptons facade



Park facade



Resort Glass facade



Resort facade



Tempo facade



Verve Glass facade



Verve facade

Go to dennisfamily.com.au or call **1800 DENNIS** for more information.

Lot width and depth subject to fall of land. Floorplans and dimensions based on Classic facade and may alter depending on facade chosen and may not reflect developer guidelines. Copyright Dennis Family Intellectual Property Pty Ltd © 2020. Images may include optional, additional cost upgrades such as facade render, feature tiles, driveway, garage doors and concrete paths, and items not supplied by Dennis Family Homes such as landscaping, decking, water features, retaining walls, window furnishings, light fittings, furniture and decorator items unless otherwise specified. Dennis Family Homes Pty Ltd ACN 056254249 is a registered building practitioner. Building licence number CDB-U 49195 (Vic) and 173511C (NSW).



dennis family homes

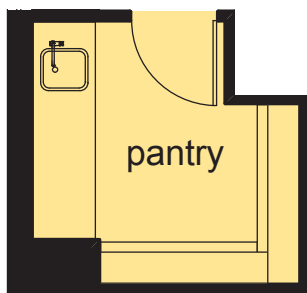
a family building homes for families™

INSPIRATIONS SERIES

PATTERSON 363 floorplan options

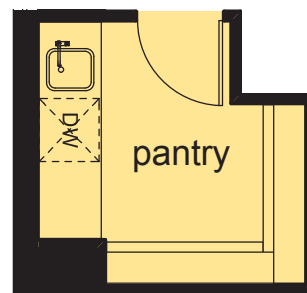
PANTRY 1

Include single bowl sink.



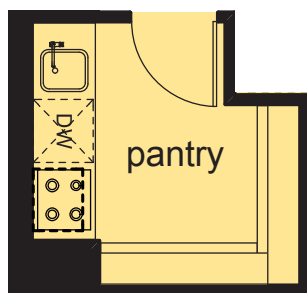
PANTRY 2

Include single bowl sink and provision for dishwasher.



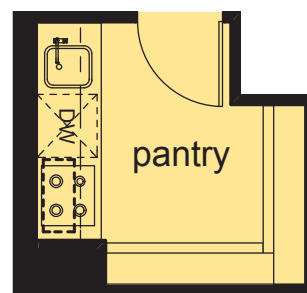
PANTRY 3

Include gas cooktop, canopy rangehood, single bowl sink and provision for dishwasher.



PANTRY 4

Include gas cooktop, concealed rangehood, single bowl sink and provision for dishwasher.



Go to dennisfamily.com.au or call **1800 DENNIS** for more information.

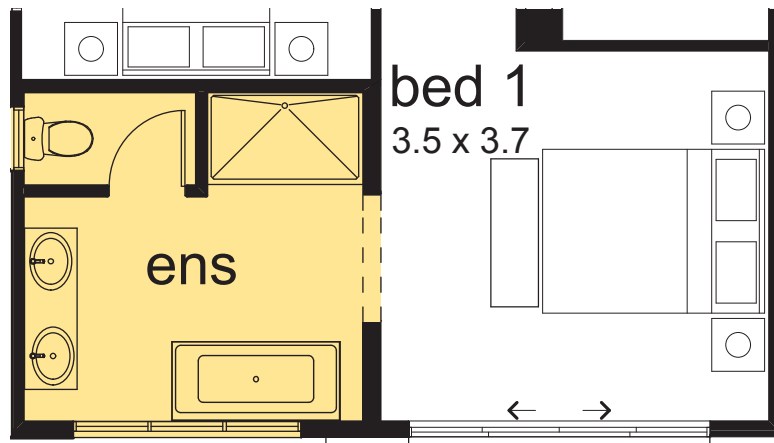
Lot width and depth subject to fall of land. Floorplans and dimensions based on Classic façade and may alter depending on façade chosen and may not reflect developer guidelines. Copyright Dennis Family Intellectual Property Pty Ltd © 2020. Images may include optional, additional cost upgrades such as façade render, feature tiles, driveway, garage doors and concrete paths, and items not supplied by Dennis Family Homes such as landscaping, decking, water features, retaining walls, window furnishings, light fittings, furniture and decorator items unless otherwise specified. Dennis Family Homes Pty Ltd ACN 056254249 is a registered building practitioner. Building licence number CDB-U 49195 (Vic) and 173511C (NSW).

INSPIRATIONS SERIES

PATTERSON 363 floorplan options

FIRST FLOOR ENSUITE OPTION

Option includes free standing bath



Go to dennisfamily.com.au or call **1800 DENNIS** for more information.

Lot width and depth subject to fall of land. Floorplans and dimensions based on Classic façade and may alter depending on façade chosen and may not reflect developer guidelines. Copyright Dennis Family Intellectual Property Pty Ltd © 2020. Images may include optional, additional cost upgrades such as façade render, feature tiles, driveway, garage doors and concrete paths, and items not supplied by Dennis Family Homes such as landscaping, decking, water features, retaining walls, window furnishings, light fittings, furniture and decorator items unless otherwise specified. Dennis Family Homes Pty Ltd ACN 056254249 is a registered building practitioner. Building licence number CDB-U 49195 (Vic) and 173511C (NSW).