



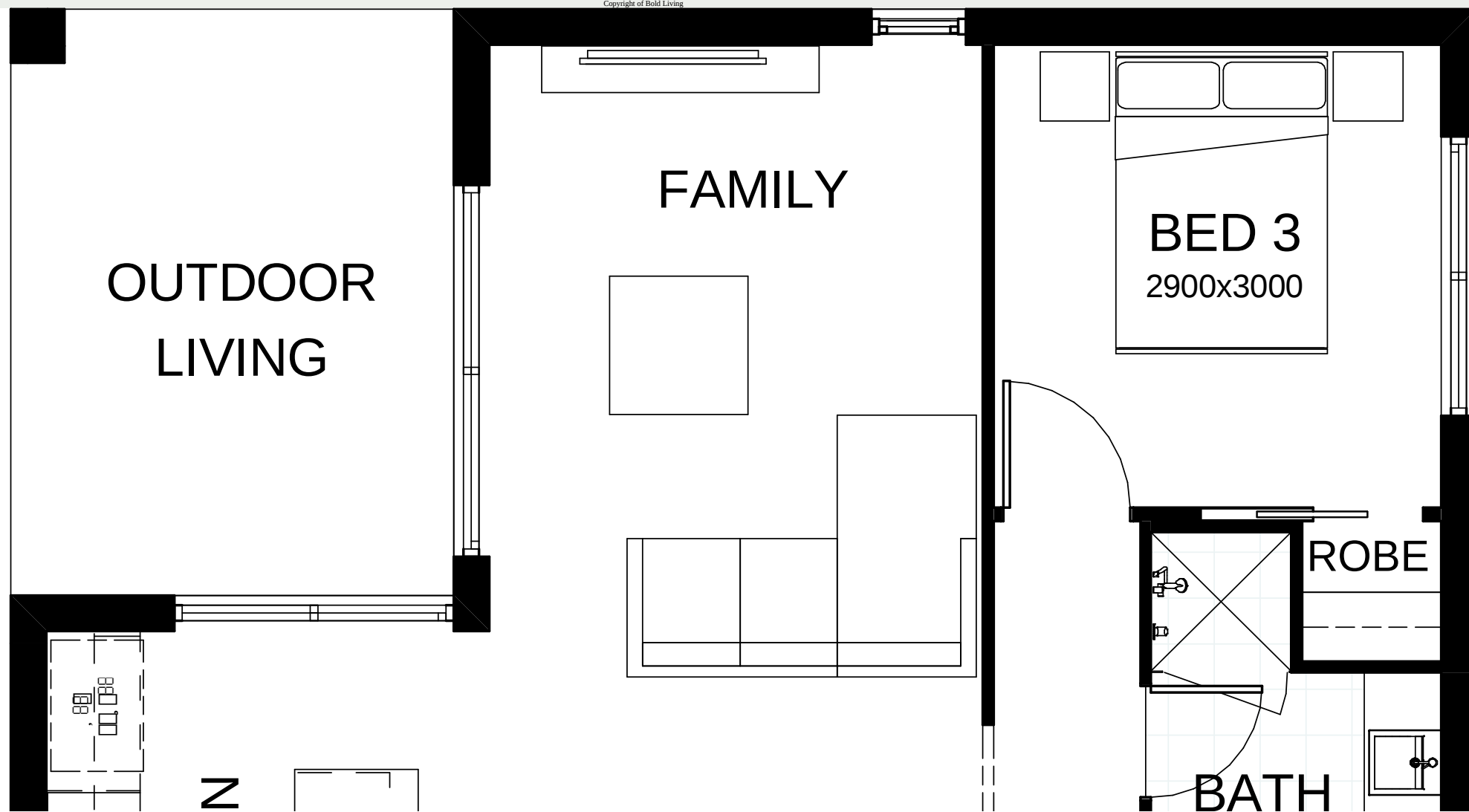
# Sophia 20

Everything essential is included in this smart single level design. From the multi-purpose room – perfect for relaxing, to the open plan family, dining and kitchen space at the heart of the home connecting directly to the spacious alfresco area. Contact us today to customise the Sophia home to you!

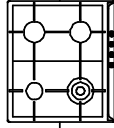
- **Frontage** 12m
- **Exterior** 19.68m x 10.8m
- **Total Floor Area** 189.9m<sup>2</sup>

- Bedrooms 4
- Living 4
- Bathrooms 2.5
- Study 1
- Car Spaces 2

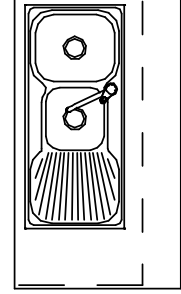
This document is produced for marketing and illustration purposes and should only be used as a guide.  
Please note all plans are not to scale, and all images, materials used and inclusions are indicative only.  
Copyright of Bold Living



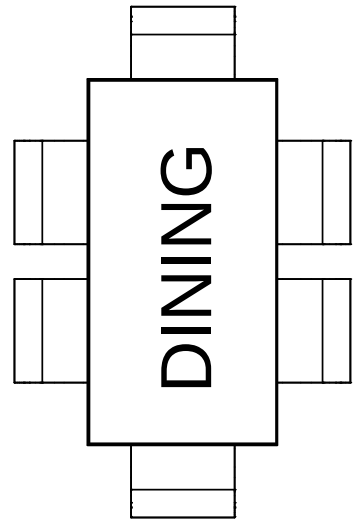




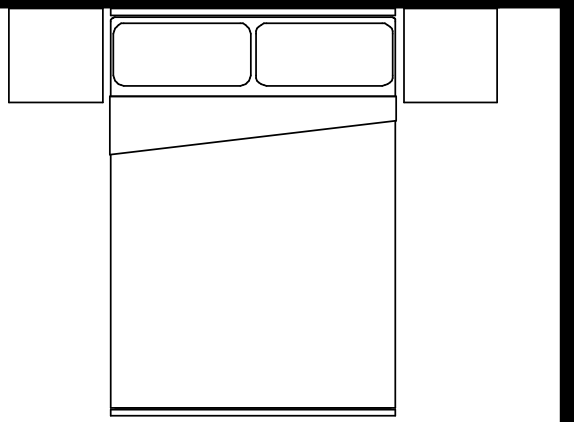
KITCHE



WIP

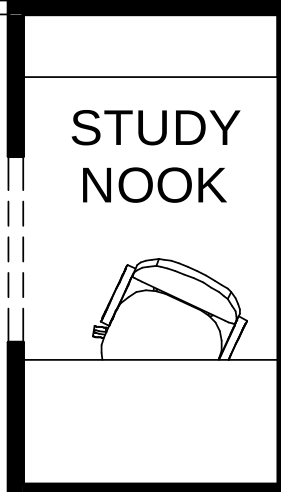


DINING



BED 4/MPR

3000x3600

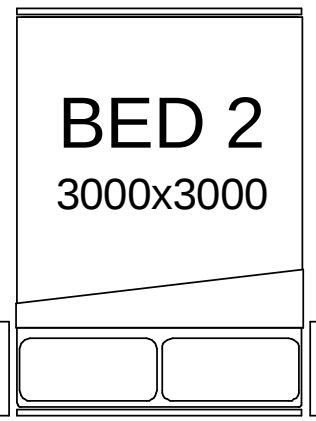


STUDY NOOK

ROBE

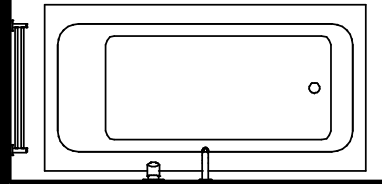


BR



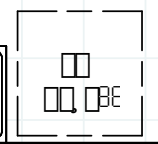
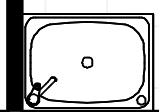
BED 2

3000x3000



WC

LDY



COBE

**GARAGE**

5800x5800

LINEN

ENS

WIR

ENTRY

**BED 1**

3400x3500

*create your dream*







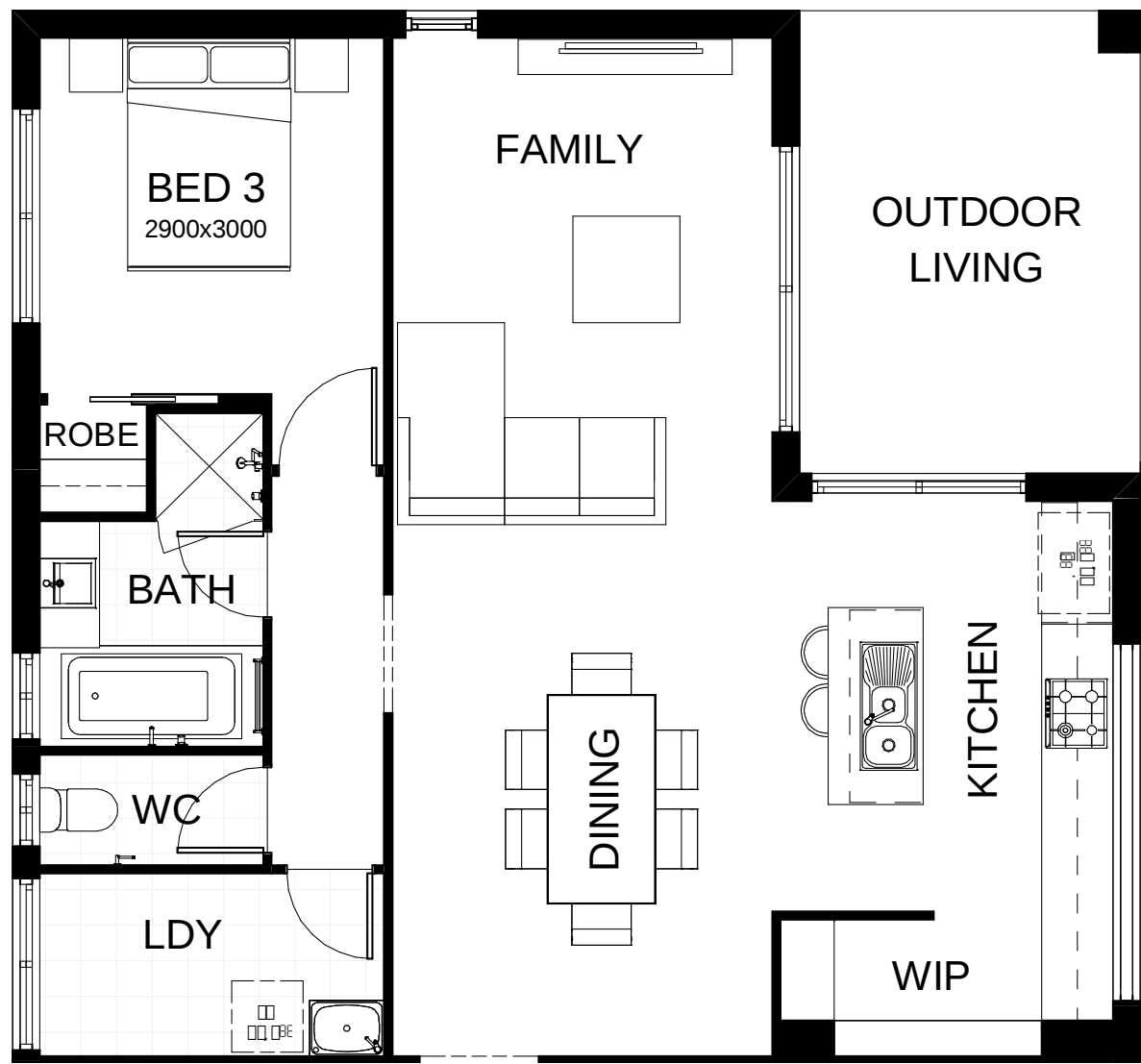
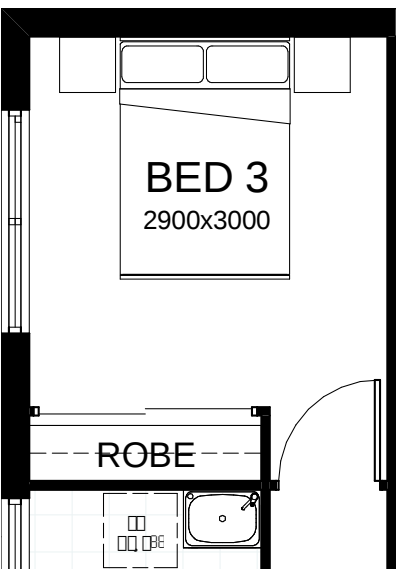
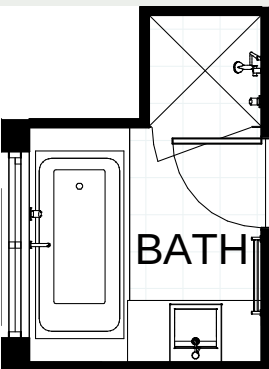
# Sophia M 20

Everything essential is included in this smart single level design. From the multi-purpose room – perfect for relaxing, to the open plan family, dining and kitchen space at the heart of the home connecting directly to the spacious alfresco area. Contact us today to customise the Sophia home to you!

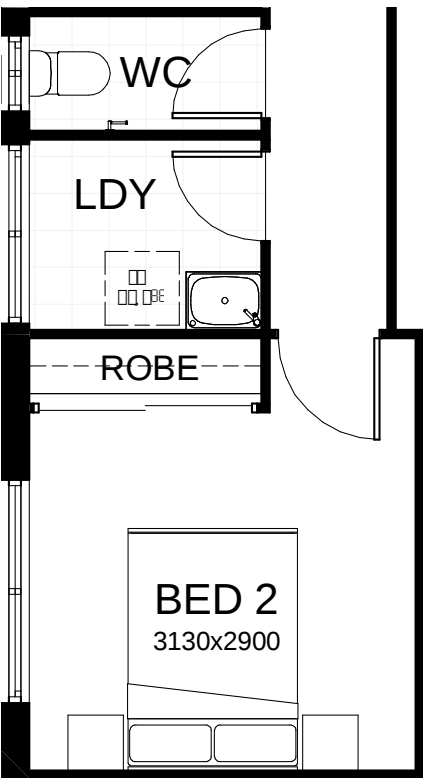
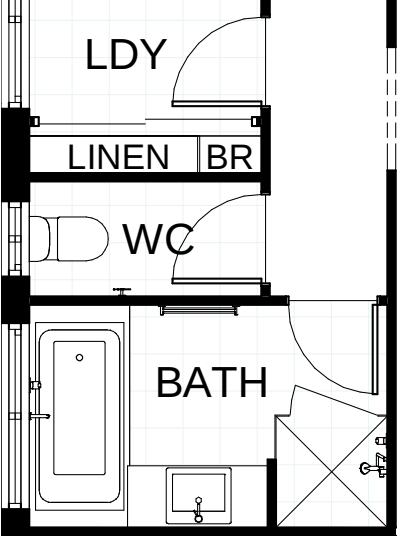
- **Frontage** 12m
- **Exterior** 19.68m x 10.8m
- **Total Floor Area** 189.9m<sup>2</sup>

- Bedrooms 4
- Living 2
- Bathrooms 2
- Study 1
- Car Spaces 2

This document is produced for marketing and illustration purposes and should only be used as a guide. Please note all plans are not to scale, and all images, materials used and inclusions are indicative only. Copyright of Bold Living







*create your dream*





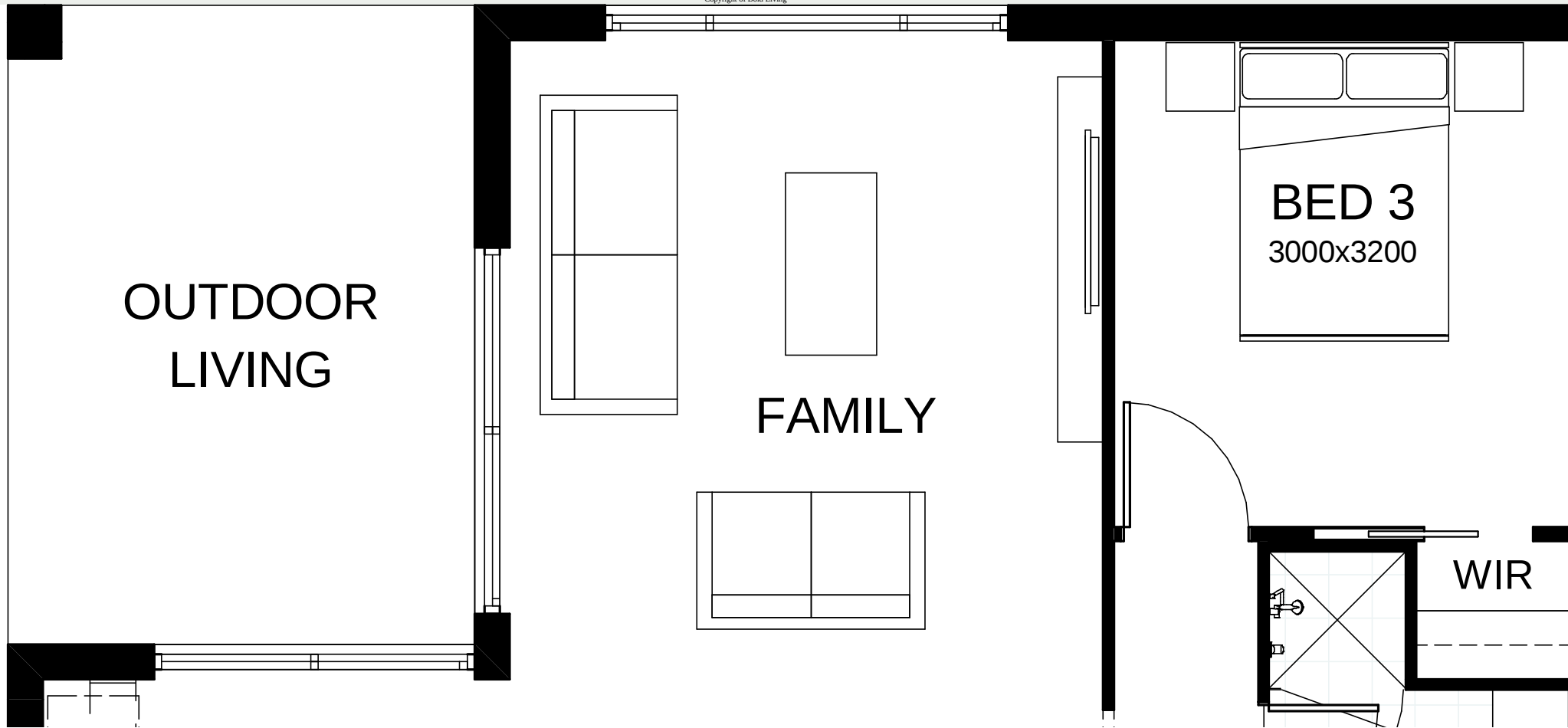
# Sophia 22

Everything essential is included in this smart single level design. From the multi-purpose room – perfect for relaxing, to the open plan family, dining and kitchen space at the heart of the home connecting directly to the spacious alfresco area. Contact us today to customise the Sophia home to you!

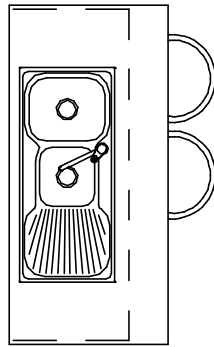
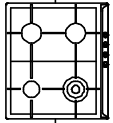
- **Frontage** 12.5m
- **Exterior** 20.43m x 11.3m
- **Total Floor Area** 210.9m<sup>2</sup>

- Bedrooms 4
- Living 4
- Bathrooms 2.5
- Study 1
- Car Spaces 2

This document is produced for marketing and illustration purposes and should only be used as a guide.  
Please note all plans are not to scale, and all images, materials used and inclusions are indicative only.  
Copyright of Bold Living

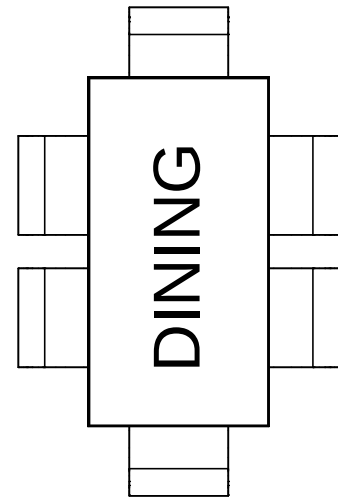


KITCHEN

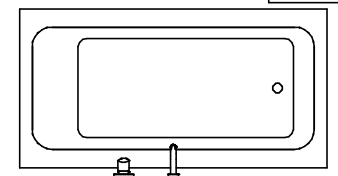


WIP

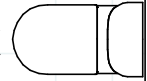
DINING



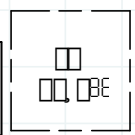
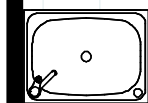
BATH



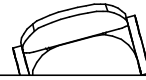
WC



LDY



STUDY NOOK



ROBE

BED 2

3000x3200

BED 4/MPR

3380x3530

BD





**GARAGE**  
5800x5800

**ENTRY**

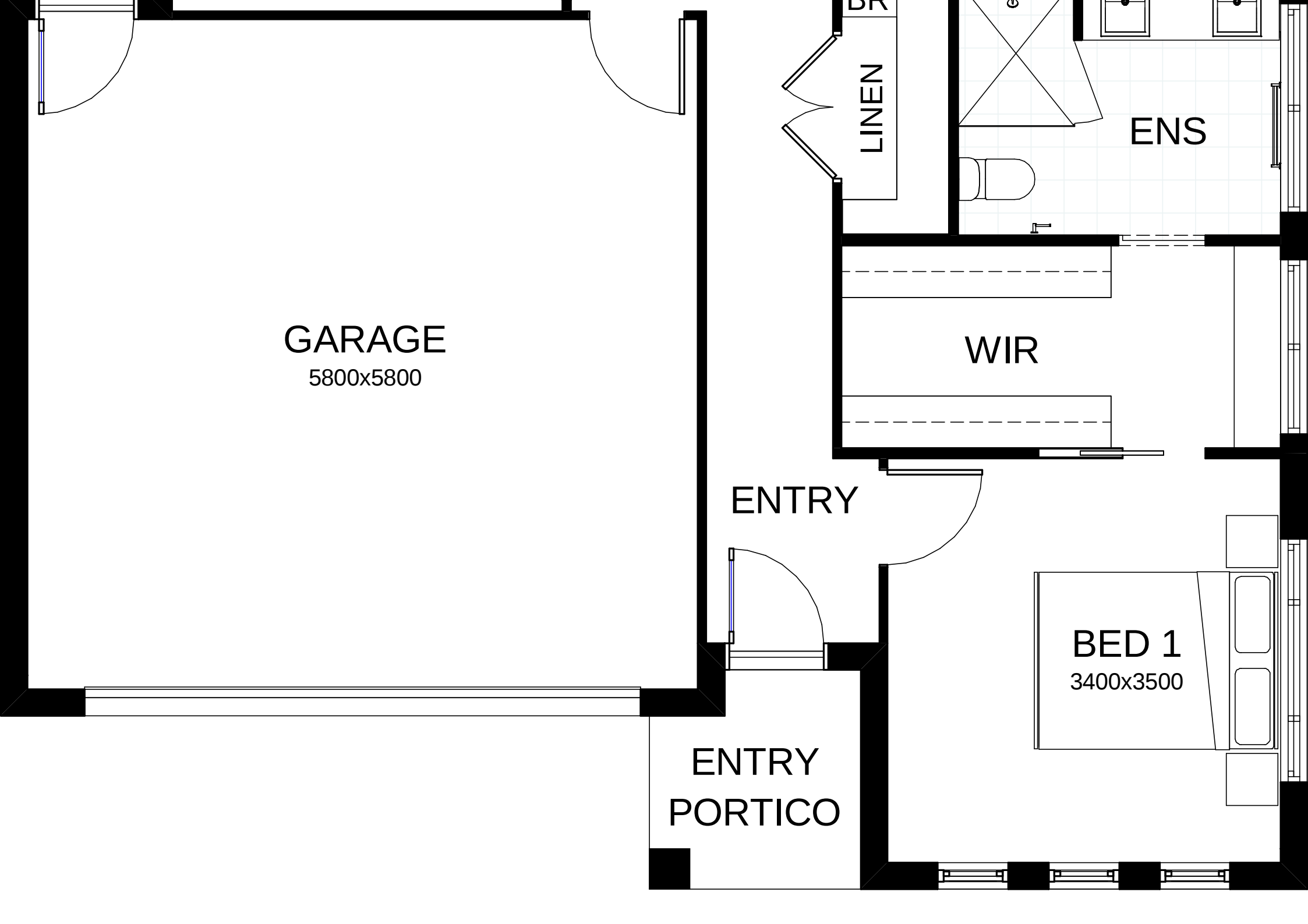
**ENTRY  
PORTICO**

**LINEN**

**ENS**

**WIR**

**BED 1**  
3400x3500



*create your dream*





## Sophia M 22

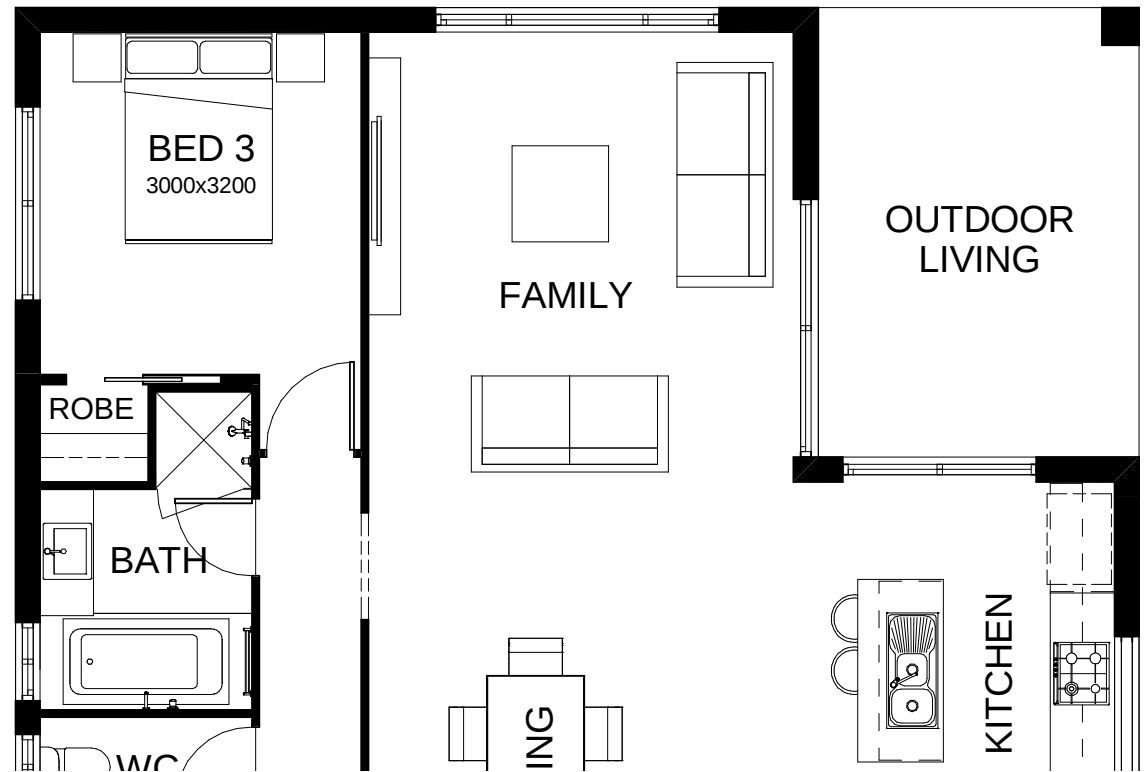
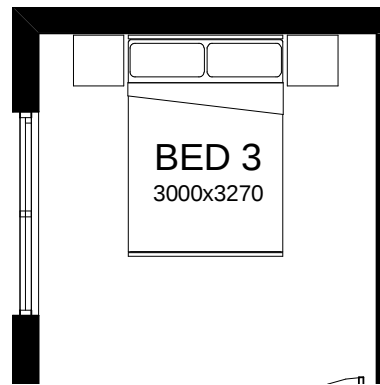
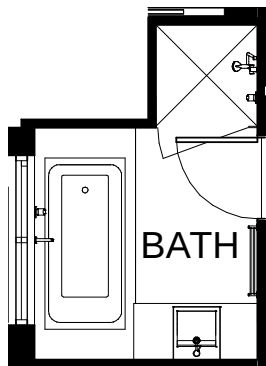
Everything essential is included in this smart single level design. From the multi-purpose room – perfect for relaxing, to the open plan family, dining and kitchen space at the heart of the home connecting directly to the spacious alfresco area. Contact us today to customise the Sophia home to you!

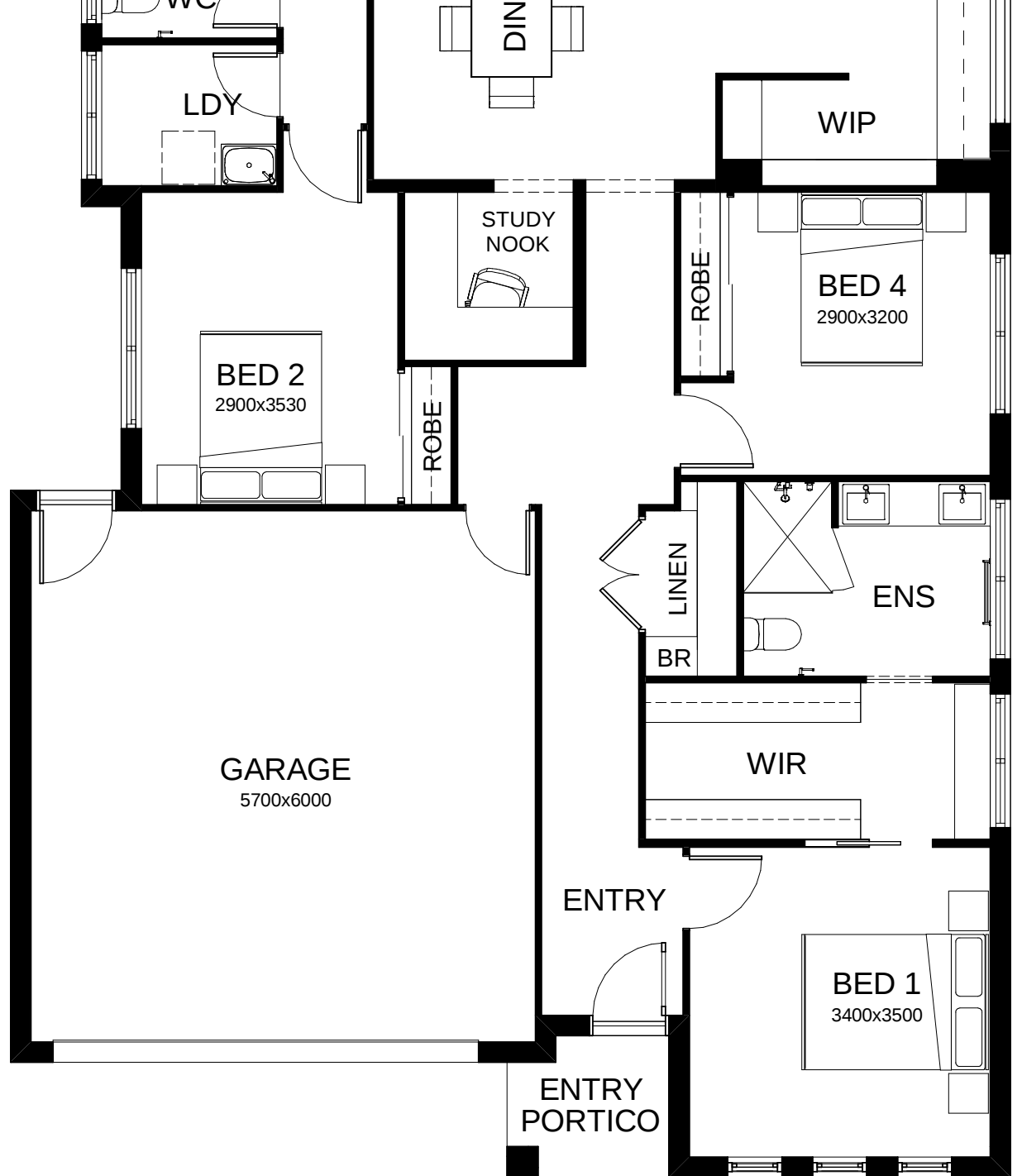
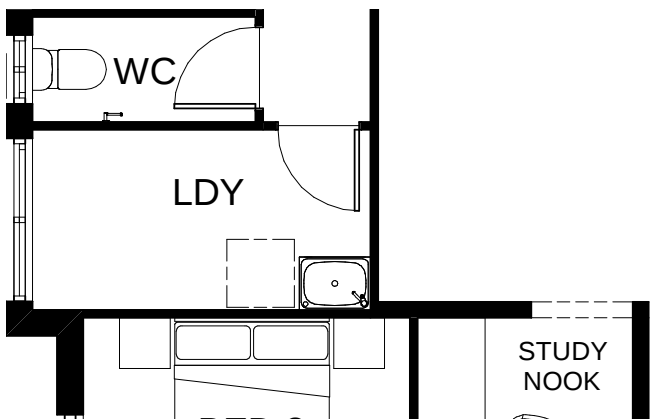
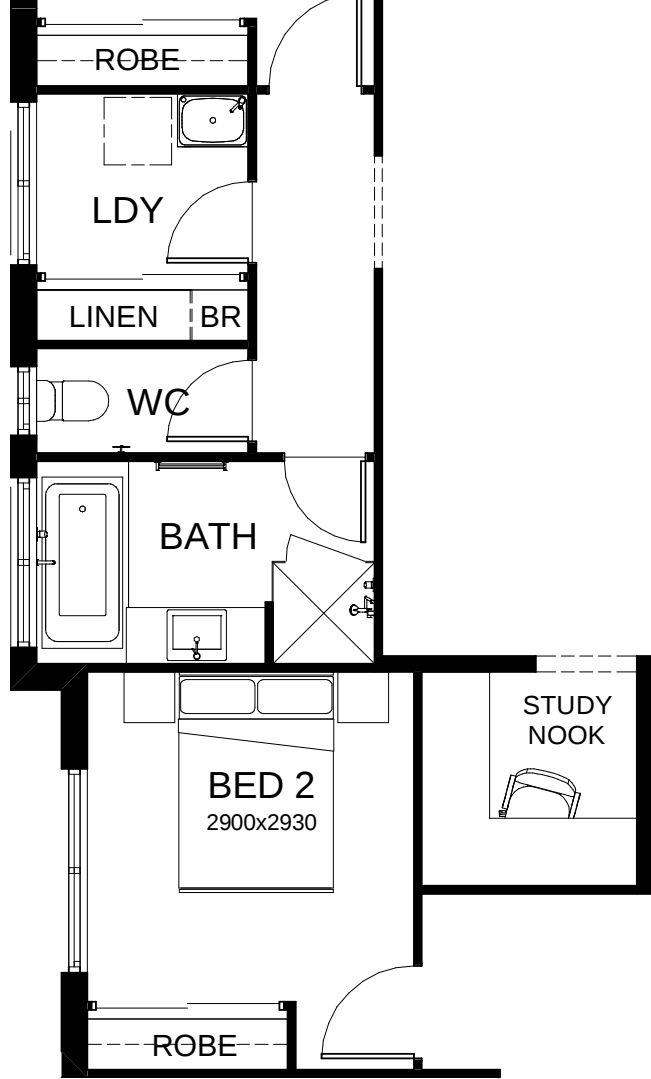
- **Frontage** 12.5m
- **Exterior** 20.43m x 11.3m
- **Total Floor Area** 212m<sup>2</sup>

- Bedrooms 4
- Living 2
- Bathrooms 2
- Study 1
- Car Spaces 2

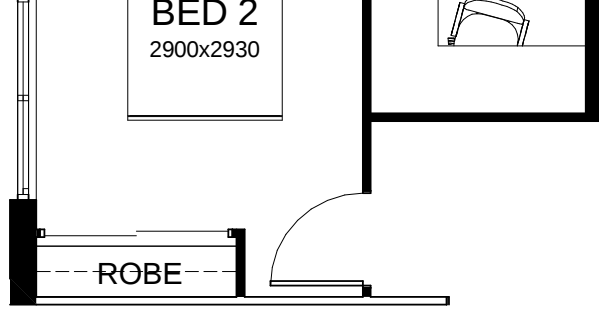
[Virtual Tour](#)

This document is produced for marketing and illustration purposes and should only be used as a guide. Please note all plans are not to scale, and all images, materials used and inclusions are indicative only. Copyright of Bold Living









*create your dream*





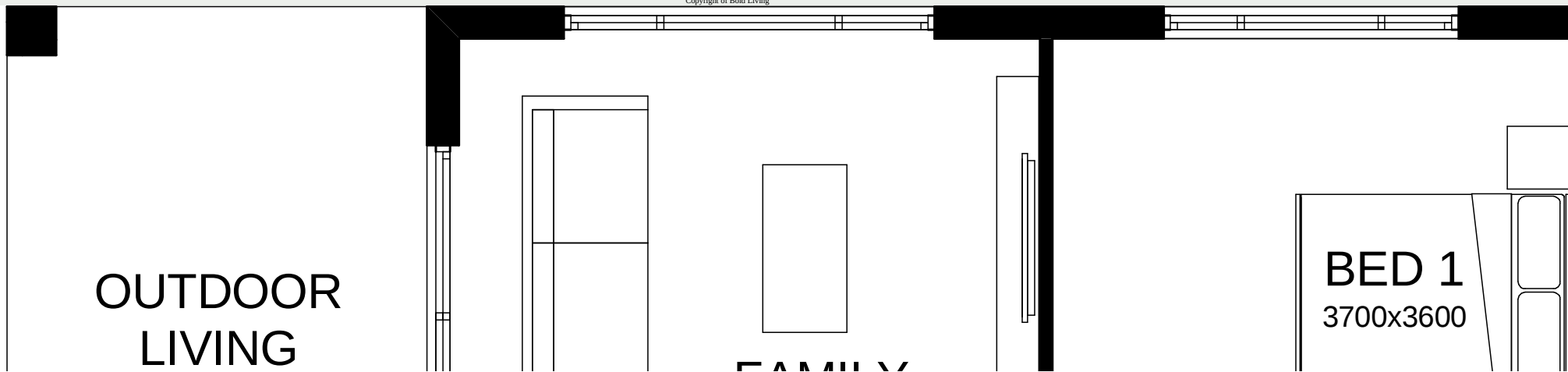
## Sophia 240

Everything essential is included in this smart single level design. From the multi-purpose room – perfect for relaxing, to the open plan family, dining and kitchen space at the heart of the home connecting directly to the spacious alfresco area. Contact us today to customise the Sophia home to you!

- **Frontage** 13.7m
- **Exterior** 21.03m x 12.50m
- **Total Floor Area** 239.7m<sup>2</sup>
- Bedrooms 4
- Living 2
- Bathrooms 2
- Study 1
- Car Spaces 2

[Virtual Tour](#)

This document is produced for marketing and illustration purposes and should only be used as a guide.  
Please note all plans are not to scale, and all images, materials used and inclusions are indicative only.  
Copyright of Bold Living







FAMILY

KITCHEN

DINING

ENS

WIR

WIP

ROBE

BED 3  
3280x3000

STUDY  
NOOK

BED 4  
3000x3200

ROBE



3000x3200

LDY

WC

BATH

LINEN

BR

BED 2

3200x2950

WIR

GARAGE

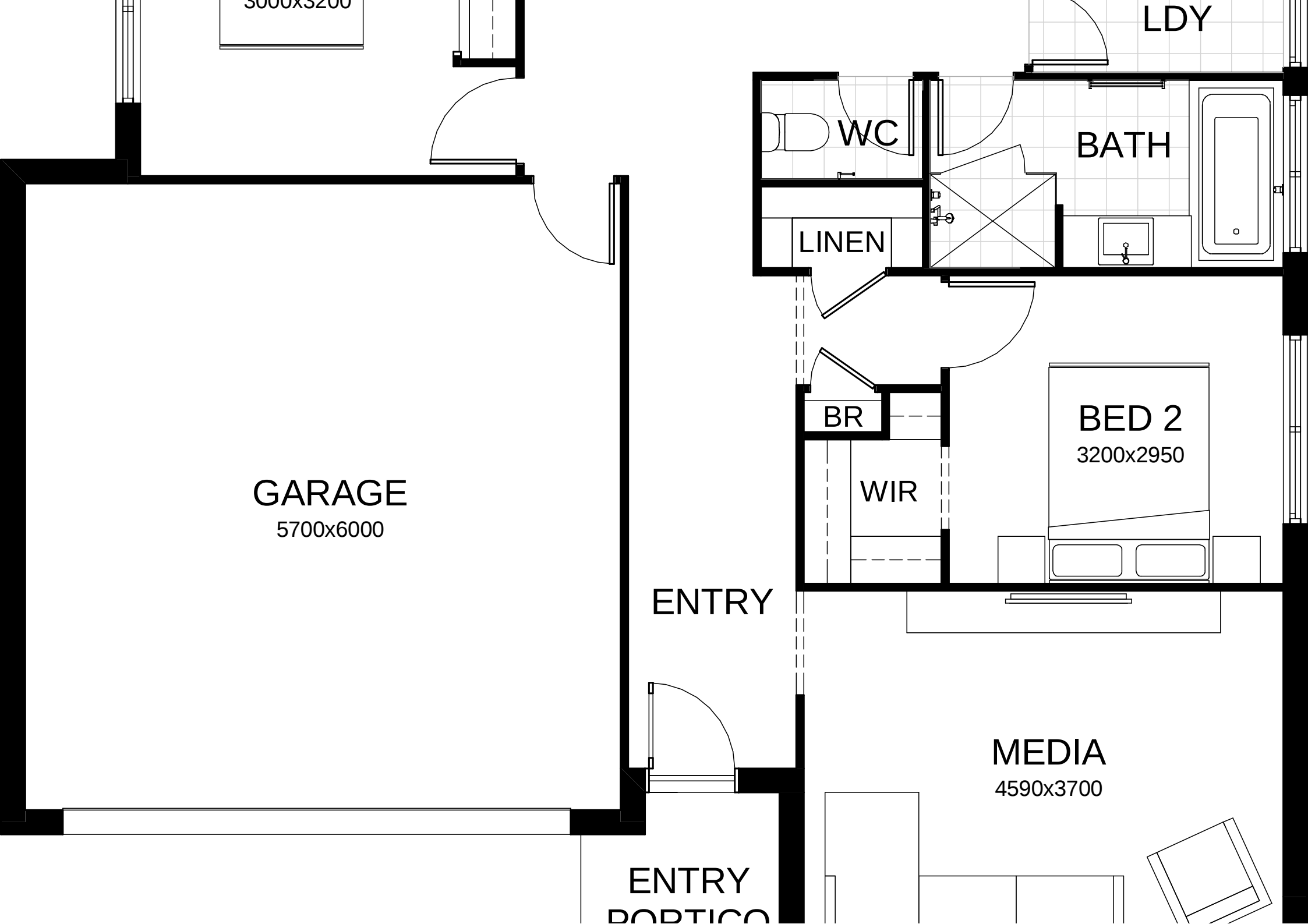
5700x6000

ENTRY

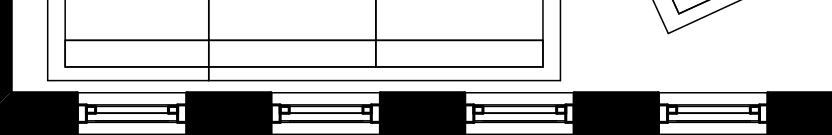
MEDIA

4590x3700

ENTRY  
PORTICO



PORTICO



*create your dream*





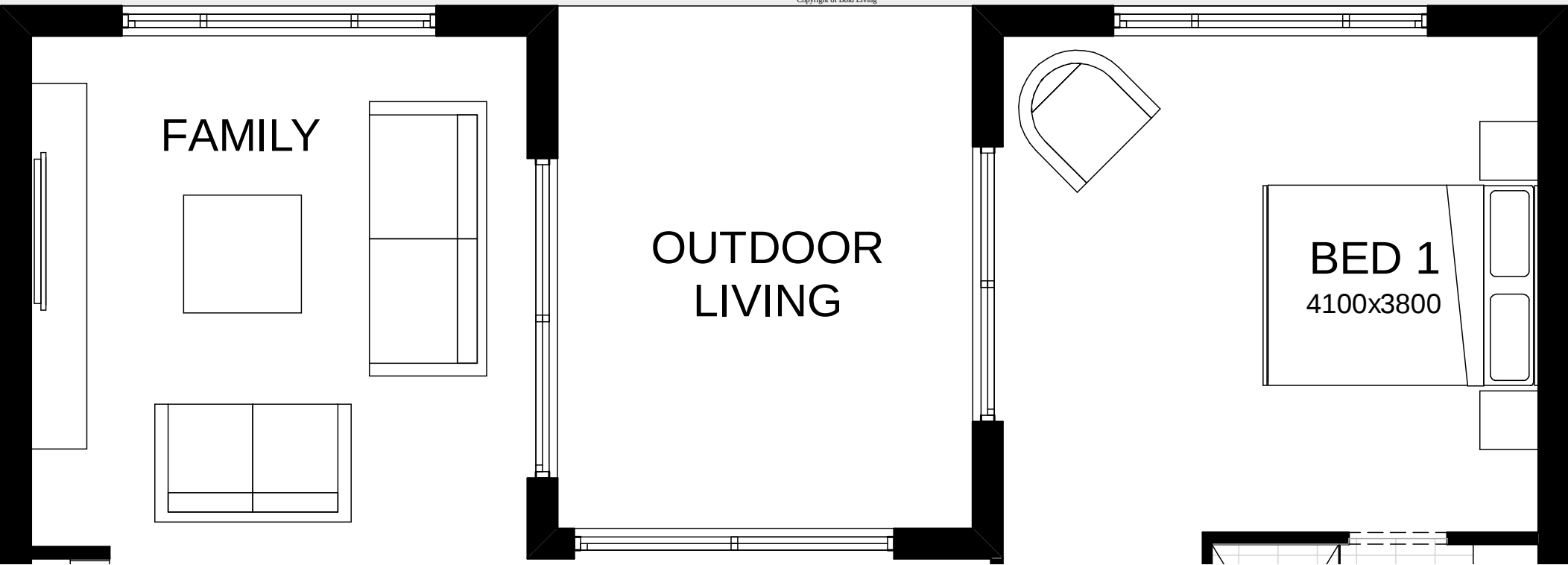
## Sophia 253

Everything essential is included in this smart single level design. From the multi-purpose room – perfect for relaxing, to the open plan family, dining and kitchen space at the heart of the home connecting directly to the spacious alfresco area. Contact us today to customise the Sophia home to you!

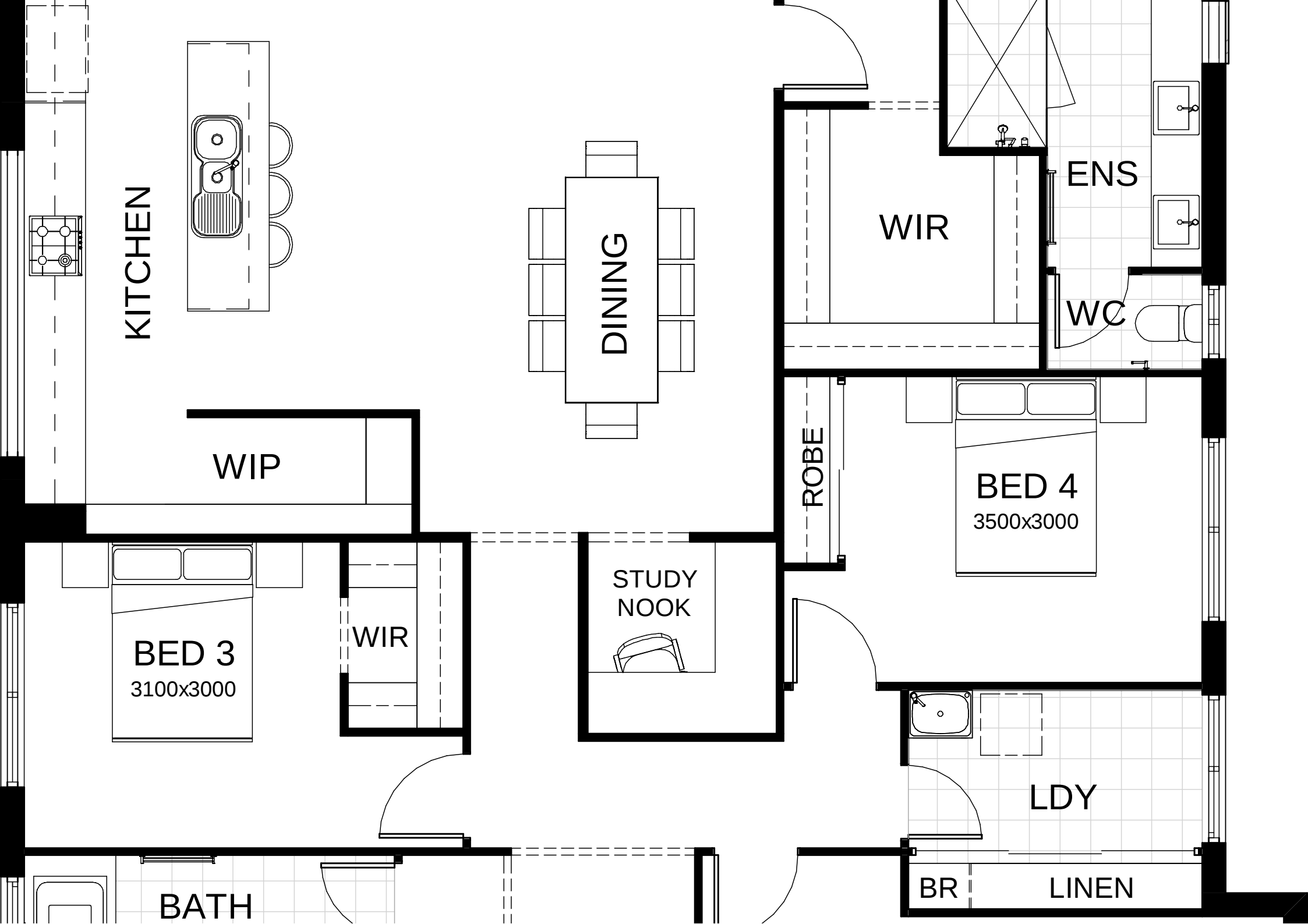
- **Frontage** 14m
- **Exterior** 21.48m x 12.80m
- **Total Floor Area** 253.10m<sup>2</sup>
  
- Bedrooms 4
- Living 2
- Bathrooms 2
- Study 1
- Car Spaces 2

[Virtual Tour](#)

This document is produced for marketing and illustration purposes and should only be used as a guide.  
Please note all plans are not to scale, and all images, materials used and inclusions are indicative only.  
Copyright of Bold Living







KITCHEN

DINING

WIP

WIR

ENS

WC

BED 4  
3500x3000

ROBE

STUDY  
NOOK

BED 3  
3100x3000

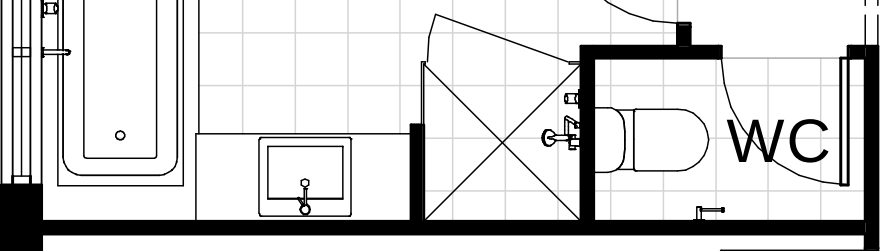
WIR

LDY

BATH

BR

LINEN



BED 2  
3300x3000

WIR

ENTRY

GARAGE  
5700x6000

MEDIA

ENTRY  
PORTICO

*create your dream*







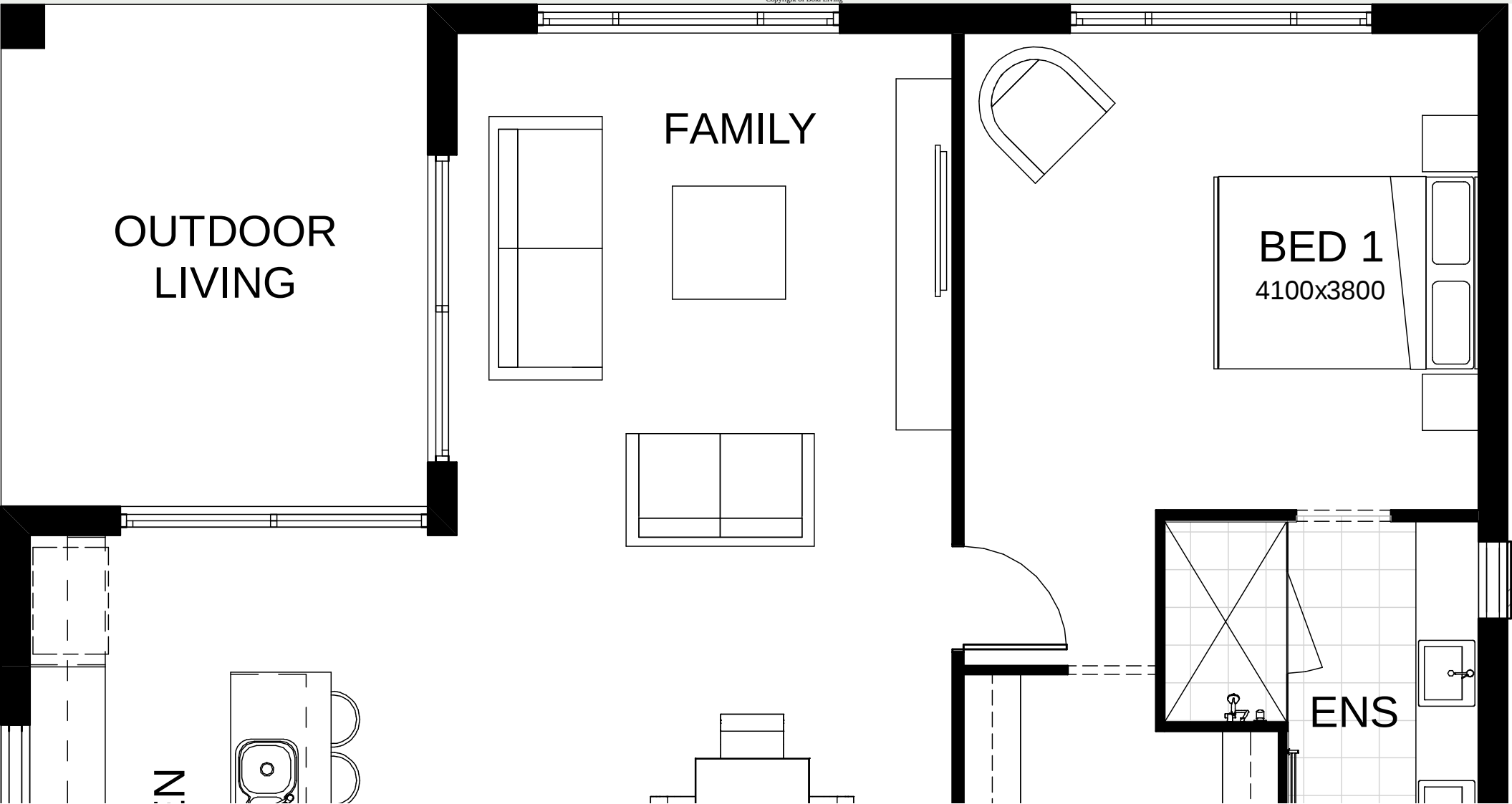
# Sophia 253 M

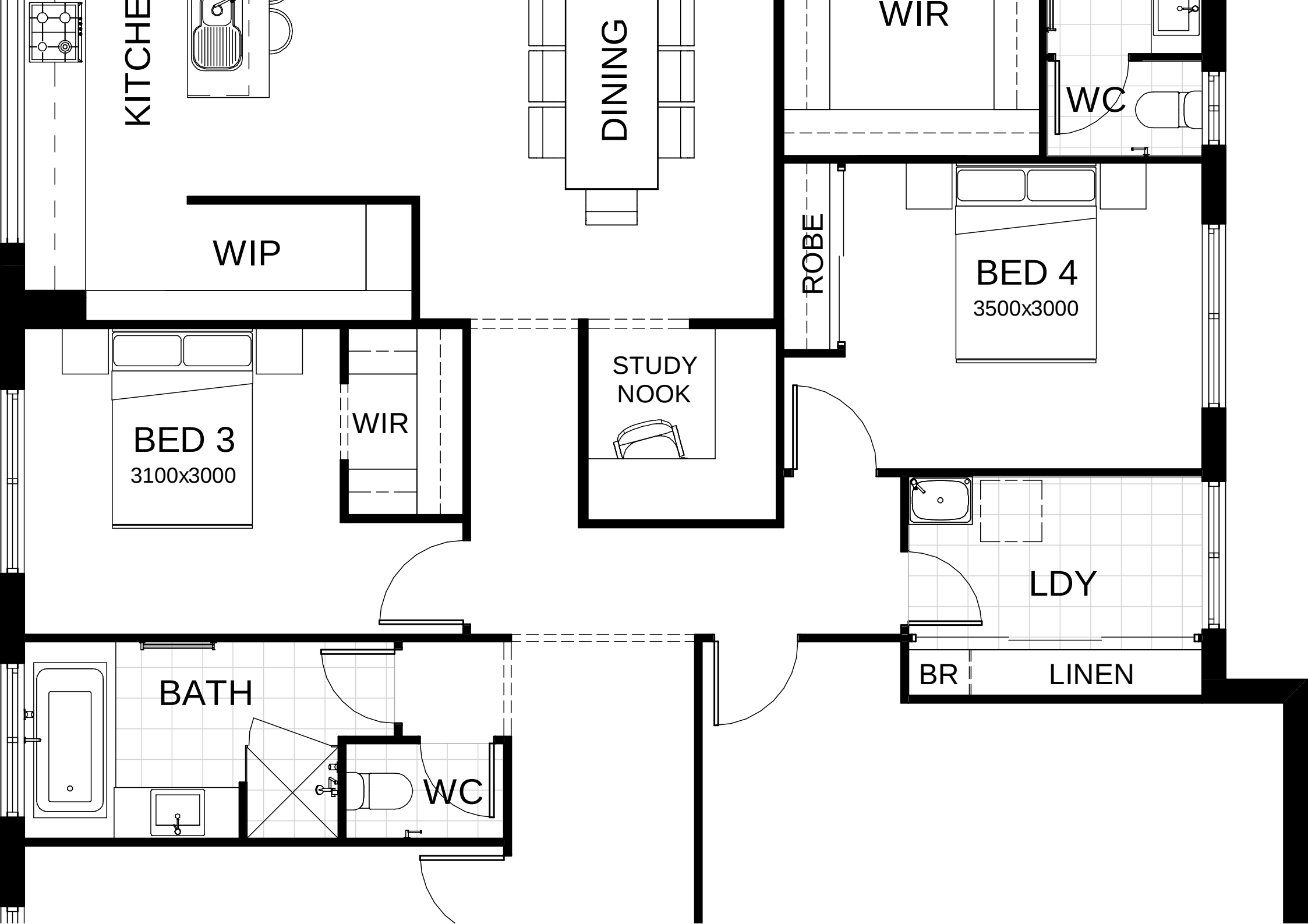
Everything essential is included in this smart single level design. From the multi-purpose room – perfect for relaxing, to the open plan family, dining and kitchen space at the heart of the home connecting directly to the spacious alfresco area. Contact us today to customise the Sophia home to you!

- **Frontage** 14m
- **Exterior** 21.48m x 12.80m
- **Total Floor Area** 253.10m<sup>2</sup>

- Bedrooms 4
- Living 2
- Bathrooms 2
- Study 1
- Car Spaces 2

This document is produced for marketing and illustration purposes and should only be used as a guide.  
Please note all plans are not to scale, and all images, materials used and inclusions are indicative only.  
Copyright of Bold Living





KITCHEN

DINING

WIR

WC

WIP

ROBE

BED 4  
3500x3000

BED 3  
3100x3000

WIR

STUDY NOOK

LDY

BATH

BR

LINEN

WC

BED 2

3300x3000

WIR

ENTRY

GARAGE

5700x6000

MEDIA

ENTRY  
PORTICO

*create your dream*

