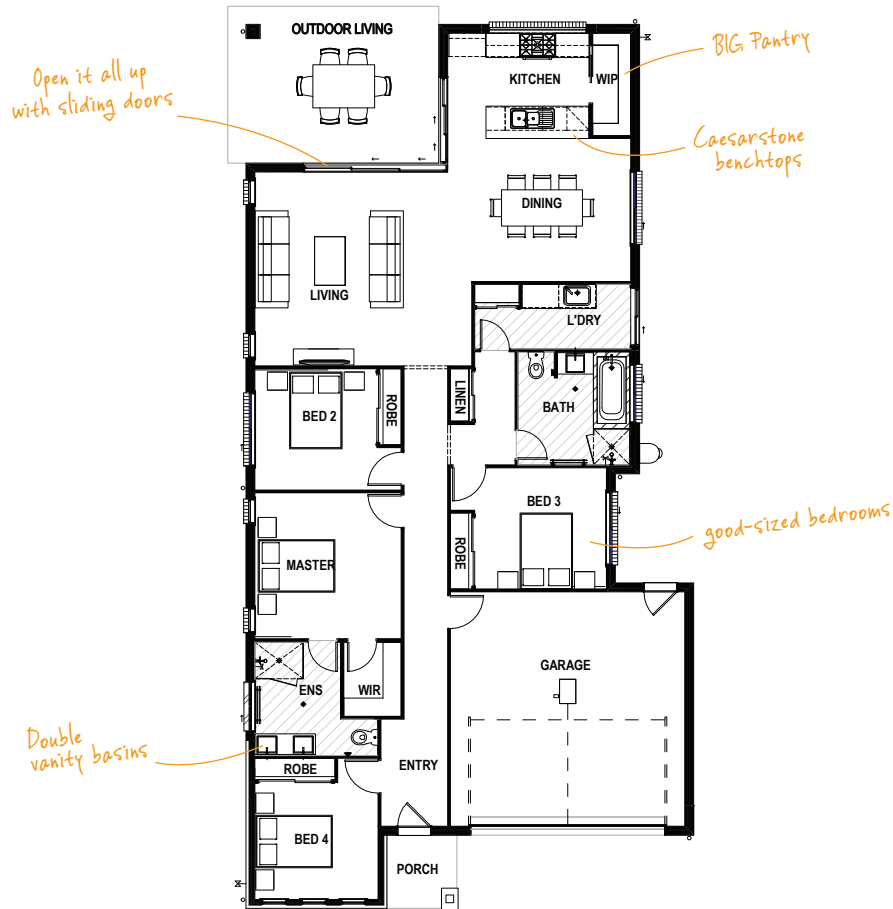


# CRAWFORD 23 MODERN

🛏️ 4 🚿 2 🚗 1 🚗 2

From the breezy indoor-outdoor living area to the huge walk-in pantry, this home is filled with thoughtful details that make family life flow.

TOTAL FLOOR AREA : 215.5m<sup>2</sup> (incl. Outdoor Living)



## HOME DIMENSIONS

Master Suite	3.6 x 3.6m	Double Garage	5.8 x 5.8m
Bedroom 2	3.0 x 3.0m	House length <sup>^</sup>	21.9m
Bedroom 3	3.0 x 3.2m	House width <sup>^</sup>	11.1m
Bedroom 4	2.9 x 3.0m	Total floor area (incl. Outdoor Living)	215.5m <sup>2</sup>
Living	4.8 x 4.7m	<sup>^</sup> measured brick to brick	
Dining	3.5 x 4.5m		
Outdoor Living	3.4 x 4.8m		



Contact us today!

P 07 3801 1328 E sales@drhomes.com.au DRHomes.com.au

**DRHomes**  
the home team advantage™