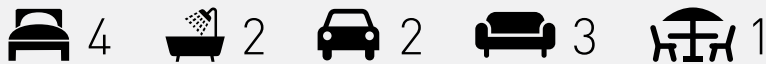


INSPIRATIONS SERIES

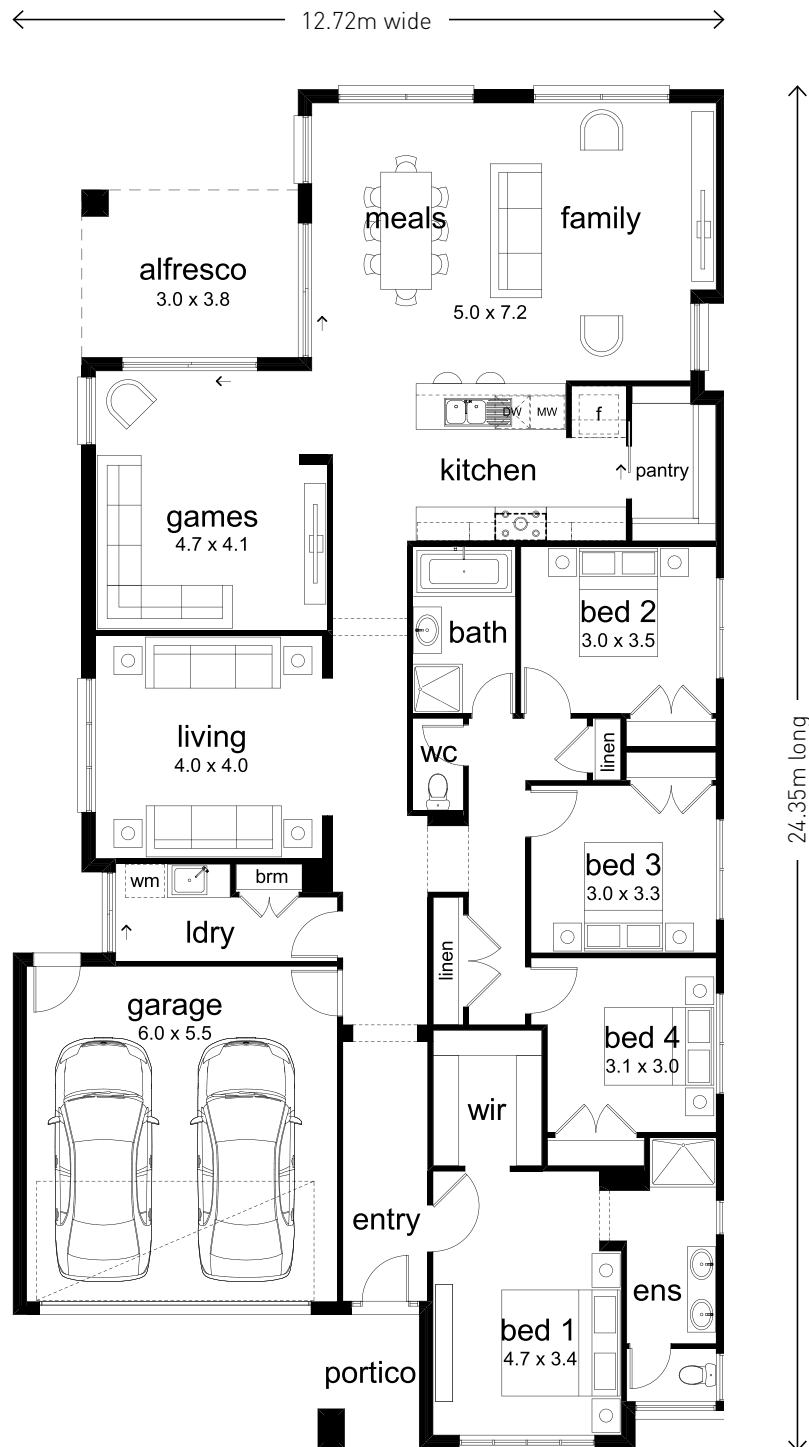
ALEXANDRA 293



FITS LOT
DEPTH OF **32M**

FITS LOT
WIDTHS OF **14M**

Total	268.73m ²	28.93sq
Living	216.56m ²	23.31sq
Portico	4.32m ²	0.47sq
Alfresco	11.52m ²	1.24sq
Garage	36.32m ²	3.90sq



Go to dennisfamily.com.au or call **1800 DENNIS** for more information.

Lot width and depth subject to fall of land. Floorplans and dimensions based on Classic façade and may alter depending on façade chosen and may not reflect developer guidelines. Copyright Dennis Family Intellectual Property Pty Ltd © 2020. Images may include optional, additional cost upgrades such as façade render, feature tiles, driveway, garage doors and concrete paths, and items not supplied by Dennis Family Homes such as landscaping, decking, water features, retaining walls, window furnishings, light fittings, furniture and decorator items unless otherwise specified. Dennis Family Homes Pty Ltd ACN 056254249 is a registered building practitioner. Building licence number CDB-U 49195 (Vic) and 173511C (NSW).



dennis family homes

a family building homes for families™

INSPIRATIONS SERIES

ALEXANDRA 293 facade options



Boardwalk facade



Boulevard facade



Classic facade



Resort facade



Savannah facade



Tempo facade

Go to **dennisfamily.com.au** or call **1800 DENNIS** for more information.

Lot width and depth subject to fall of land. Floorplans and dimensions based on Classic façade and may alter depending on façade chosen and may not reflect developer guidelines. Copyright Dennis Family Intellectual Property Pty Ltd © 2020. Images may include optional, additional cost upgrades such as façade render, feature tiles, driveway, garage doors and concrete paths, and items not supplied by Dennis Family Homes such as landscaping, decking, water features, retaining walls, window furnishings, light fittings, furniture and decorator items unless otherwise specified. Dennis Family Homes Pty Ltd ACN 056254249 is a registered building practitioner. Building licence number CDB-U 49195 (Vic) and 173511C (NSW).



dennis family homes

a family building homes for families™

INSPIRATIONS SERIES

ALEXANDRA 293 facade options



Verve facade



Vogue facade

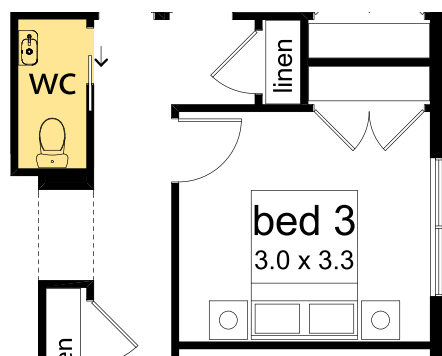


Hamptons facade

ALEXANDRA 293 floorplan option

WC

Include basin and tap to WC.



Go to dennisfamily.com.au or call **1800 DENNIS** for more information.

Lot width and depth subject to fall of land. Floorplans and dimensions based on Classic façade and may alter depending on façade chosen and may not reflect developer guidelines. Copyright Dennis Family Intellectual Property Pty Ltd © 2020. Images may include optional, additional cost upgrades such as façade render, feature tiles, driveway, garage doors and concrete paths, and items not supplied by Dennis Family Homes such as landscaping, decking, water features, retaining walls, window furnishings, light fittings, furniture and decorator items unless otherwise specified. Dennis Family Homes Pty Ltd ACN 056254249 is a registered building practitioner. Building licence number CDB-U 49195 (Vic) and 173511C (NSW).



dennis family homes

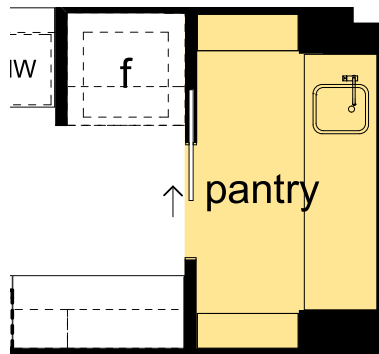
a family building homes for families™

INSPIRATIONS SERIES

ALEXANDRA 293 pantry options

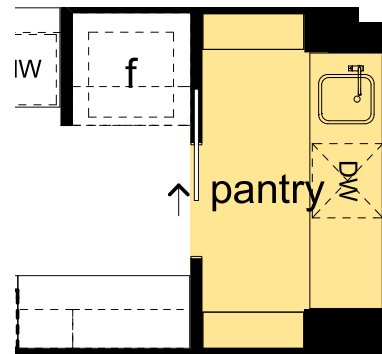
PANTRY 1

Includes single bowl sink.



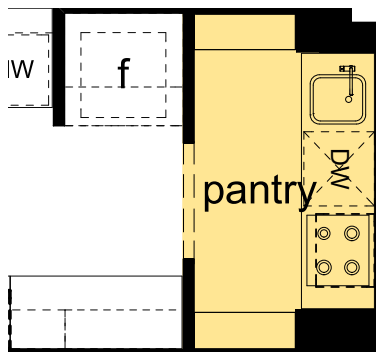
PANTRY 2

Includes single bowl sink and provision for dishwasher.



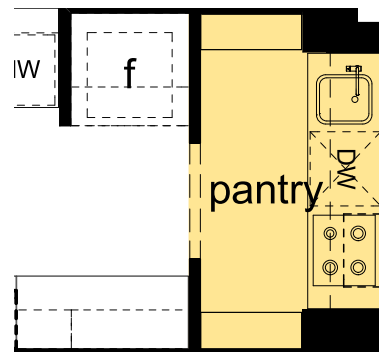
PANTRY 3

Includes gas cooktop, canopy rangehood, single bowl sink and provision for dishwasher.



PANTRY 4

Includes a gas cooktop, concealed rangehood, single bowl sink and provision for a dishwasher.



Go to dennisfamily.com.au or call **1800 DENNIS** for more information.

Lot width and depth subject to fall of land. Floorplans and dimensions based on Classic façade and may alter depending on façade chosen and may not reflect developer guidelines. Copyright Dennis Family Intellectual Property Pty Ltd © 2020. Images may include optional, additional cost upgrades such as façade render, feature tiles, driveway, garage doors and concrete paths, and items not supplied by Dennis Family Homes such as landscaping, decking, water features, retaining walls, window furnishings, light fittings, furniture and decorator items unless otherwise specified. Dennis Family Homes Pty Ltd ACN 056254249 is a registered building practitioner. Building licence number CDB-U 49195 (Vic) and 173511C (NSW).



dennis family homes

a family building homes for families™