

adenbrookhomes

The Meridian

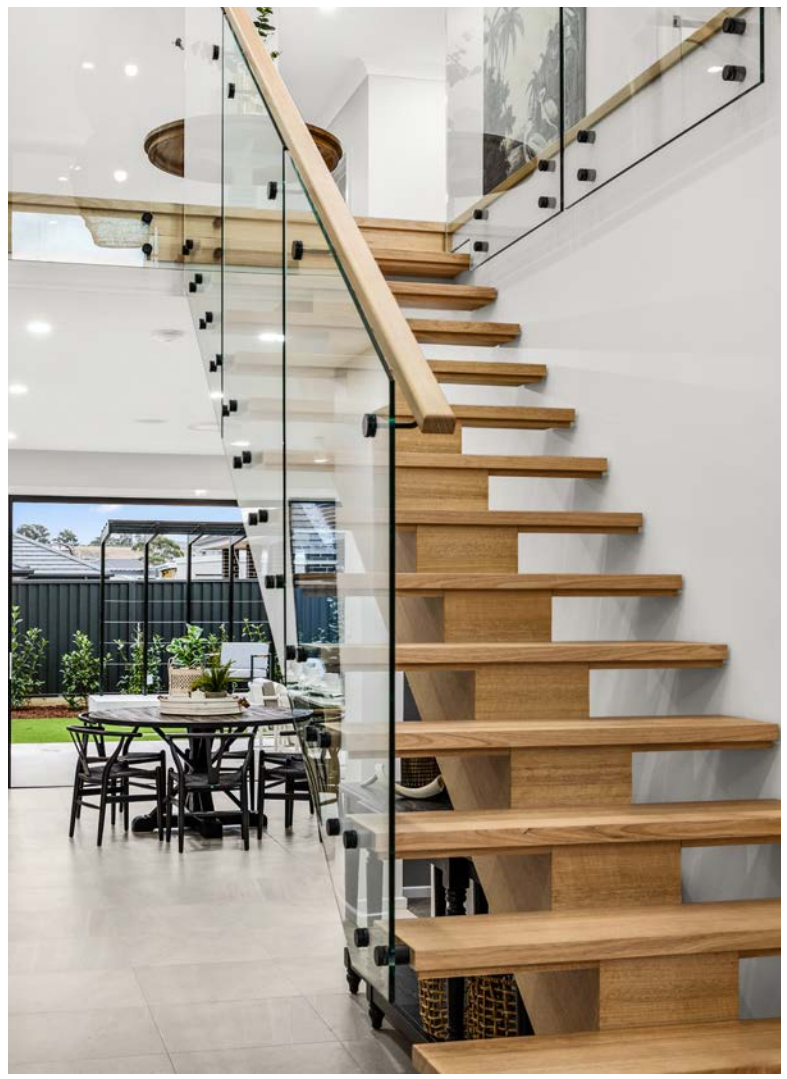
On Display with Morton Facade

17-19 NOAH STREET, BOX HILL NSW 2765



THE MERIDIAN | Home on Display

The Meridian home design has been carefully considered with large family living and sophisticated style in mind. Sprawling across two well-appointed levels, the Meridian boasts contemporary elements including a showstopping void and gallery space in addition to exclusive guest quarters with ensuite, large media room and an expansive alfresco dining area. Five bedrooms including master retreat are all spacious and separate, creating secluded retreats for the whole family.



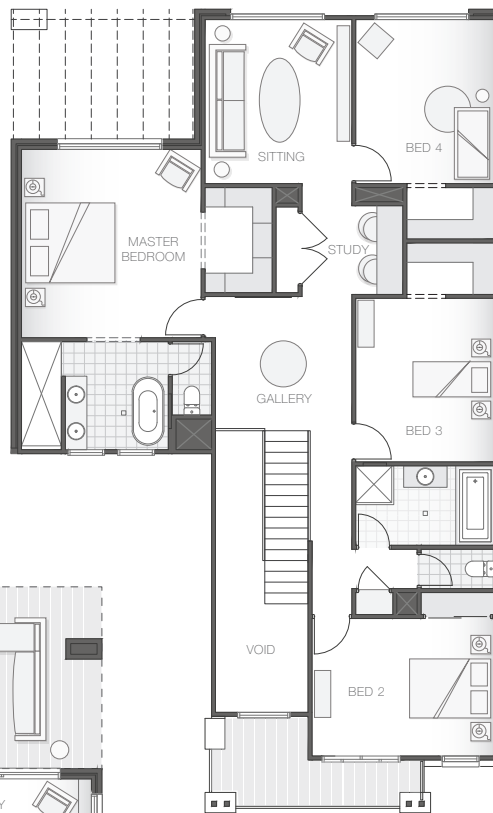


The Meridian

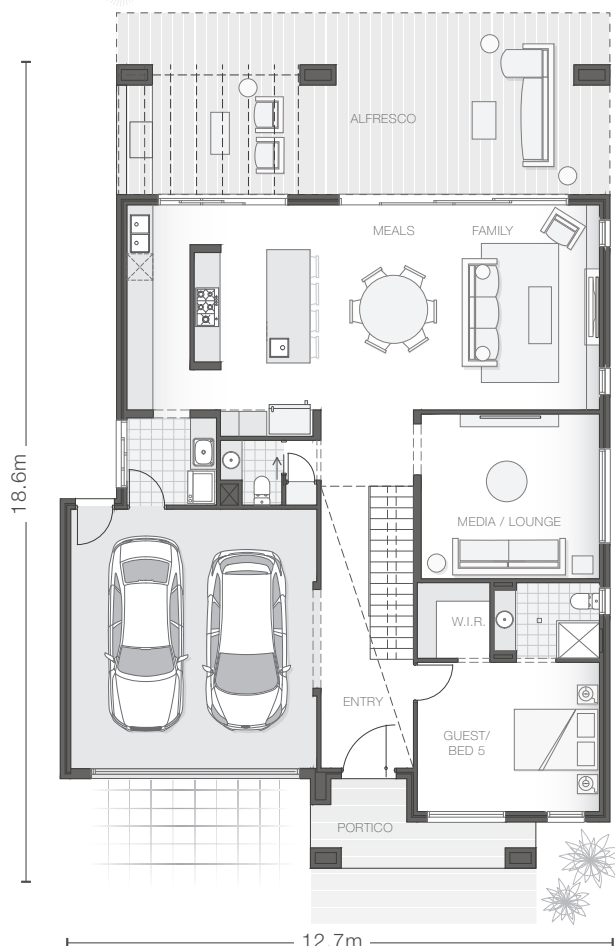
Home on Display with Morton Facade 353.6m² | 38.0sq

5  3  2 

UPPER LIVING



LOWER LIVING



KEY FEATURES

- Grand American white oak entry door and smooth finish render
- Timeless and simplistic colour palette of soft greys, oak timbers and elements of matte black
- Mono stringer Victorian ash staircase and frameless glass balustrading
- Contemporary kitchen and butler's pantry with stone benchtops, full-width island bench with gable ends and matte black tapware
- Opulent open-plan master featuring built-in walk-in-robe cabinetry,
- Master ensuite boasting twin vanities, arch mirrors, dual rain shower heads, freestanding bath and stone-look full height tiles

KEY DIMENSIONS

Minimum Lot Width	15.0m
Length	18.6m
Width	12.7m

ROOM DIMENSIONS (m)

Meals	3.2 x 4.7
Family	3.5 x 4.7
Master Bedroom	4.1 x 4.3
Bedroom 2	4.2 x 3.2
Bedroom 3	3.2 x 3.8
Bedroom 4	3.2 x 3.8
Guest/Bedroom 5	4.2 x 3.4
Media/Lounge	4.1 x 3.8
Sitting	3.4 x 3.8
Alfresco	7.1 x 3.0

FLOOR AREAS (m²)

Lower Living	129.8
Upper Living	149.8
Garage	37.3
Alfresco	21.5
Balcony	7.4
Portico	7.8

This display includes lifestyle options which highlight features in the design. Speak with a consultant about how you can customise the base plan to suit your lifestyle.

adenbrookhomes