



## Introducing LE Chique

This inspiring house design, will definitely inspire!

It's all about being bold, creative and cutting edge.

Enter with a smile when you step inside this wide impressive foyer with its luminescent ceilings and on trend polished concrete floors.

Family sized with 4 bedrooms all finely appointed.

The study hub is zoned off with practical work area

The home theatre has the wow factor, which features a one off designed acoustic ceiling.

All bedrooms are designed with beautiful feature ceilings and LED lighting, fully integrated wardrobes with

easy glide sliding doors.

Bathrooms are luxurious with free standing baths, hob less showers, stone bench top vanities

Entertain in your gourmet dream kitchen, with scullery, plenty of storage that has very clever integration and lustrous luxe stone bench top and breakfast bar.

Soaring raked ceilings and windows to the living, dining and kitchen is jaw dropping. This is no ordinary home, this is the artistry that Topend Living are all about, we are about change, and challenging the way we build our architecturally designed homes.

Topend Living endeavor to surprise and will create your very own individual design. Each and every Topend Living home is as individual as you are; no two will ever be the same and no one can compare with our exclusive architectural designer finishes.

We pride ourselves with being ahead of the times, we are nontraditional in-home design aspects; we embrace new ideas, aspirations and desires and we proudly deliver our products for the new generation.

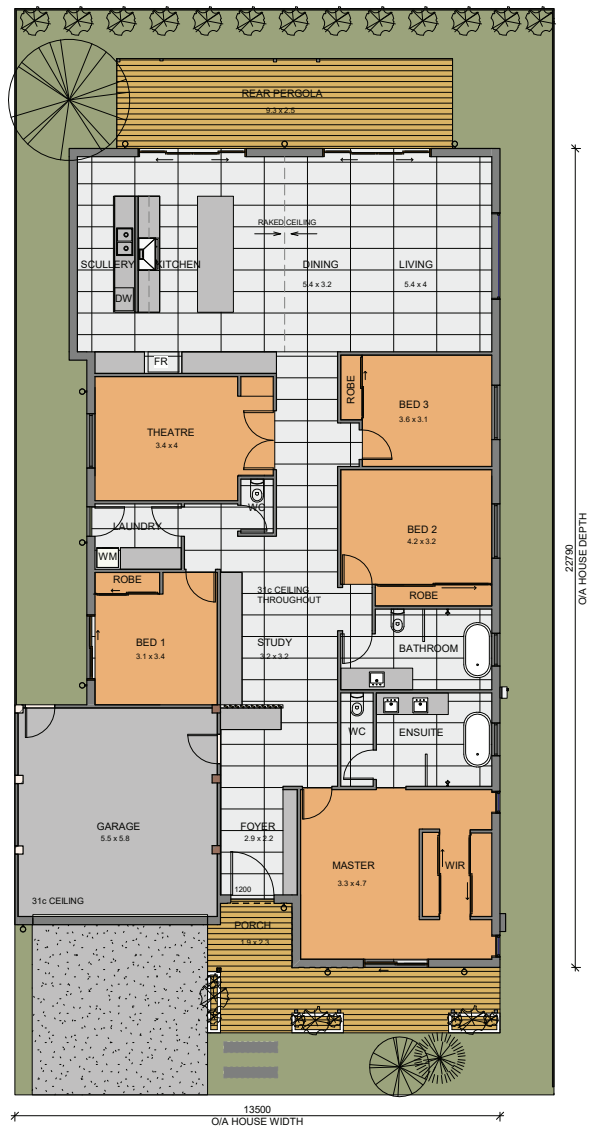
We Are different We Dare to be Different, were bringing homes into the 21st Century.

### Topend Living homes come complete with;

- Reverse cycle air conditioning
- Smart home wiring and automation IZONE
- Feature designer ceilings minimum 31 C throughout
- Led lighting throughout
- Designer bathrooms with freestanding baths and hobless showers
- Custom made gourmet kitchen with stone tops and overheads cabinets
- Fisher n Paykel stainless appliances 900mm gas cook top, double ovens 2x 600mm 900mm range hood
- Rinnai instantaneous gas 26L hot water system
- Exclusive one-off designed garage doors with thermal, acoustic and architectural features;
- Unique architectural elevations.

With our talented design team and cutting-edge technology, we can ensure ourselves being able to deliver what you want with the price where it needs to be.

Contact our New Homes Consultant Team Let us create together and turn your dream home into reality.



House	235m <sup>2</sup>	Porch	6m <sup>2</sup>	Total Living	299m <sup>2</sup>
Garage area	35m <sup>2</sup>	Rear Pergola	23m <sup>2</sup>		



P: 08 6150 9556 E: admin@topendliving.com.au  
30 Miles Road, Kewdale WA 6105  
W: topendliving.com.au