


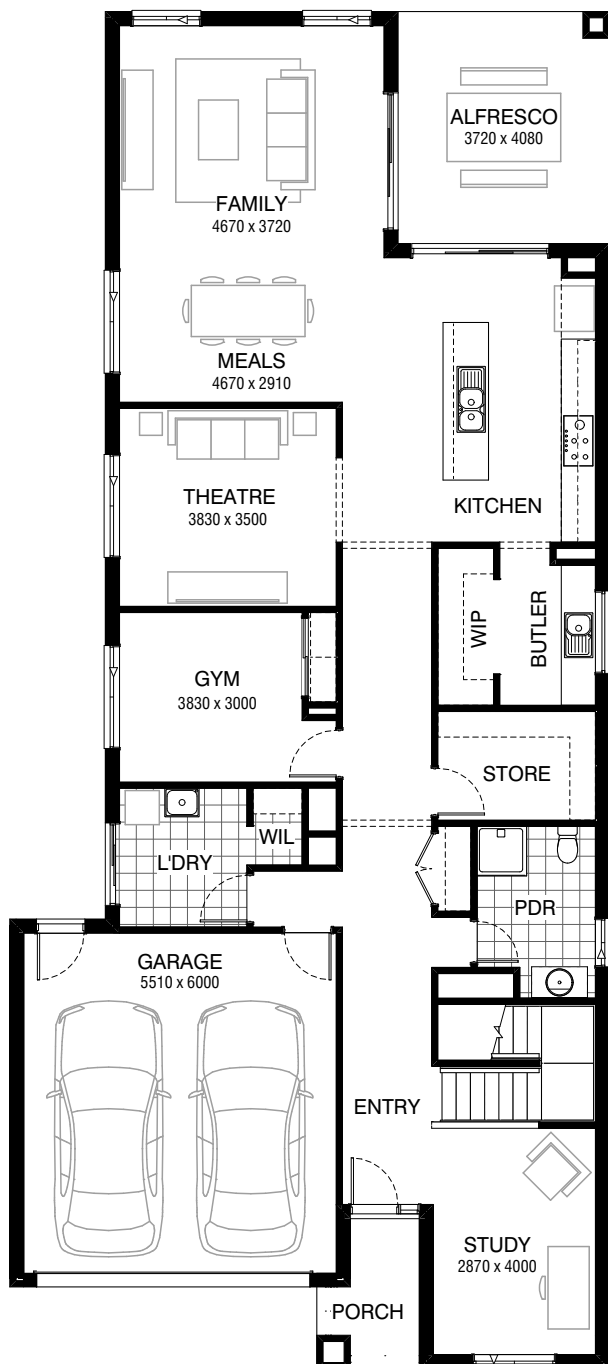


Total squares **44.5sq**

 **5**  **3**  **2**



GROUND FLOOR



FIRST FLOOR

**Facades available:**

Condor, Matisse, Monet, Aqua,

Hester, Metropolitan, Orana,

Rainforest

**Overall home width 10.55m**

**Overall home length 23.87m**

Residence 358.1m<sup>2</sup> 38.6sq

Garage 36.5m<sup>2</sup> 3.9sq

Porch 4.0m<sup>2</sup> 0.4sq

Alfresco 15.2m<sup>2</sup> 1.6sq

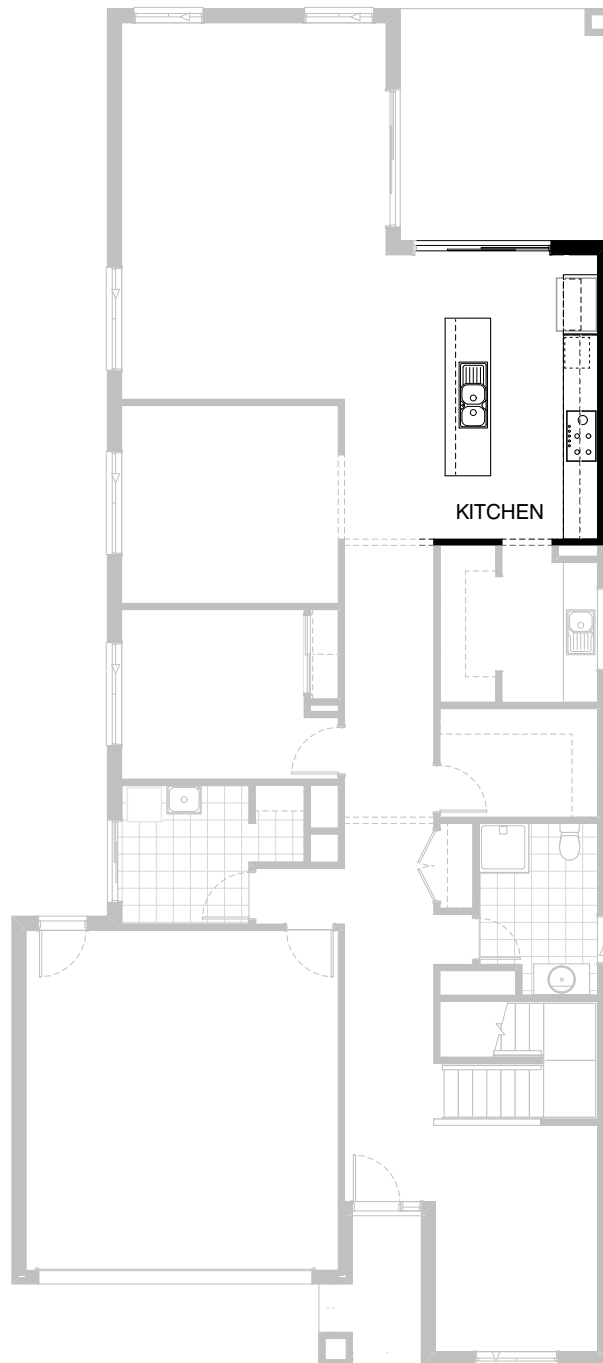
**Total 413.8m<sup>2</sup> 44.5sq**

**FLOORPLAN OPTIONS**

All available ready-to-go floorplan options for this design can be viewed on the following pages, or visit [www.burbank.com.au](http://www.burbank.com.au).

Listed details based on Condor façade floorplan (illustrated)

FLOORPLAN OPTIONS



## Option K-1

Provide Kitchen upgrade with laminated open shelf above refrigerator space, 1no. laminated MW. provision with pot drawer below, 2no. 800mm base cabinets, 2no. 700mm base cabinets, 1no. 600mm pot drawers, 2no. 700mm overhead cabinets, 2no. 600mm overhead cabinets, 1no. 450mm drawers and 1no. laminated DW. provision with additional tiled splashback and bench top to suit. Provide 900mm under bench oven with cooktop & retractable rangehood concealed within 900mm overhead cupboard

FLOORPLAN OPTIONS



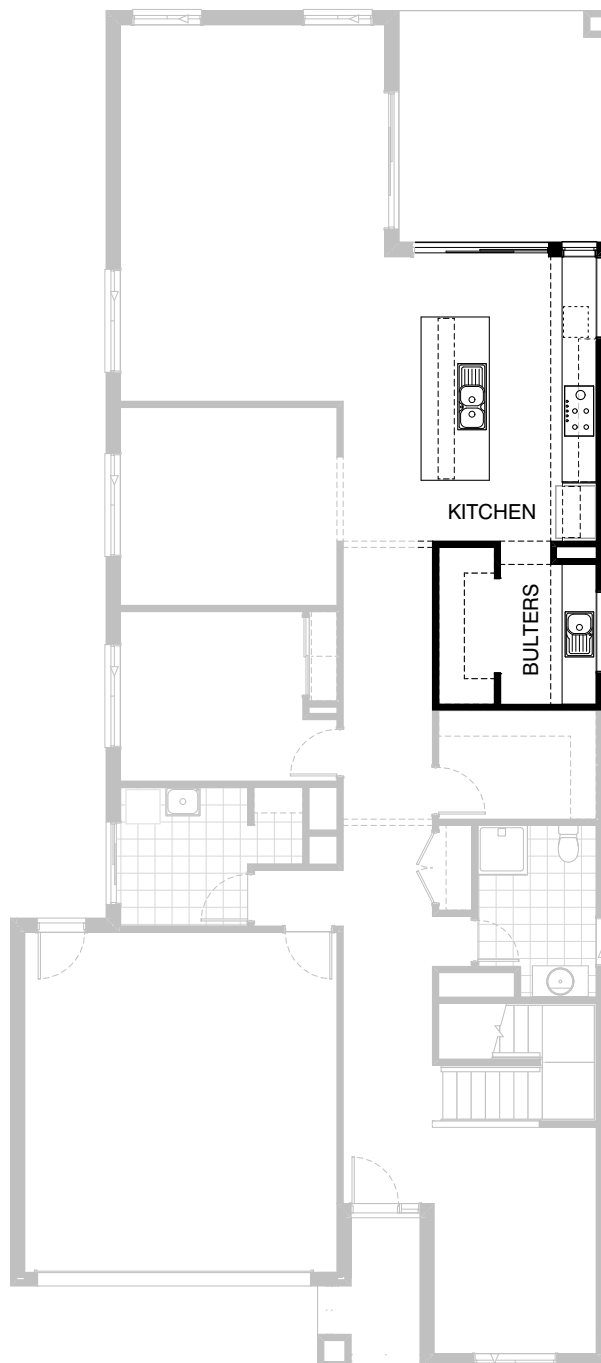
5



3



2



## Option K-2

Provide Kitchen Option including 1200mm deep island bench, added AFW1515 and AFW1506 windows with plaster reveals and no bottom reveal. Upgrade existing AFW 1515 to AFW 1515 with plaster reveals and no bottom reveal. 4no. 800mm base cabinets, 1no. 900mm base cabinet, 2no. 800mm overhead cabinets, 1No. 450mm drawers, 1No. DW.provision, 1No. MW. provision with pot drawer, 1No. refrigerator space with open shelf above. Provide 900mm underbench oven and 900mm cooktop and 1no. 900mm overhead cabinet with retractable rangehood above. Butlers Pantry includes single bowl sink with 3no. 800mm base cupboards, AFW1515 window with plaster reveal in lieu of standard, 4no. 450mm shelves.

FLOORPLAN OPTIONS



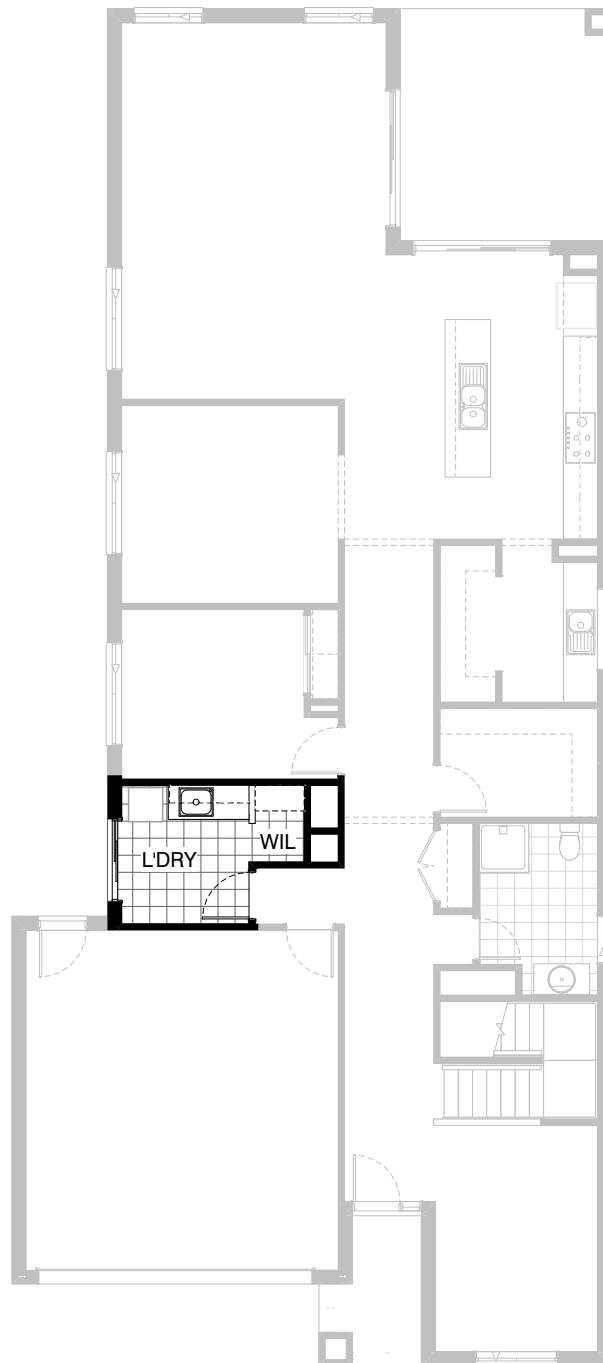
5



3



2



**Option LD-1**

Provide Laundry Option with additional s.s. inset trough,  
1no. 900mm base cupboard, 1no. 450mm base cabinet,  
1no. 900mm overhead cabinet and 1no. 450mm overhead  
cabinet with additional tiled splashback and bench top to suit.

FLOORPLAN OPTIONS



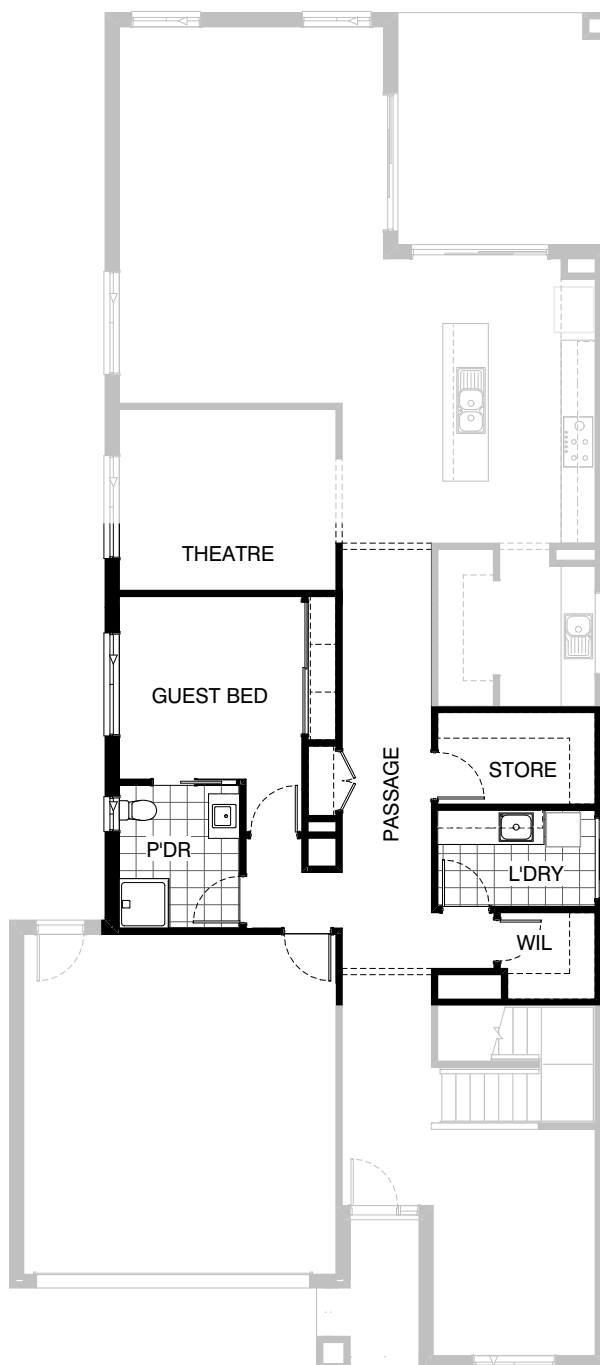
5



3



2






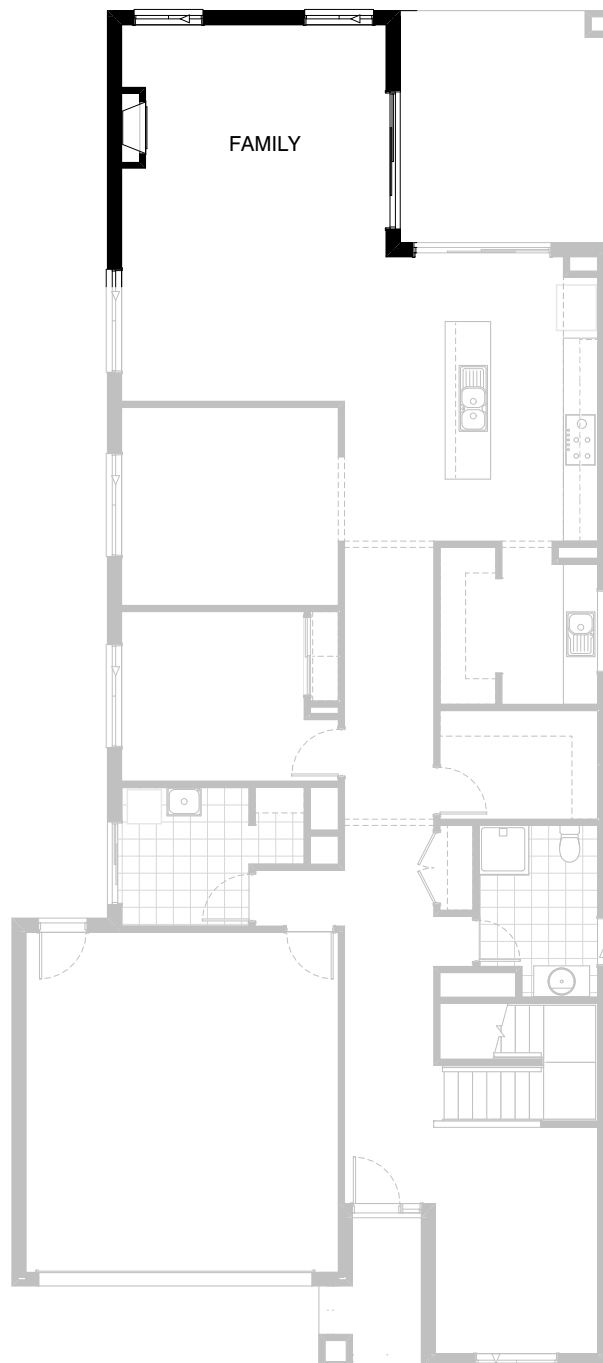
## Option LD-2

Provide Laundry upgrade with 2No. 900mm base cabinets and s.s. inset trough and 2No. 900mm overhead cabinets including additional bench top and tiled splashback to suit

**Note: Only available with Option IP5-1**

## FLOORPLAN OPTIONS




 **5**       **3**       **2**

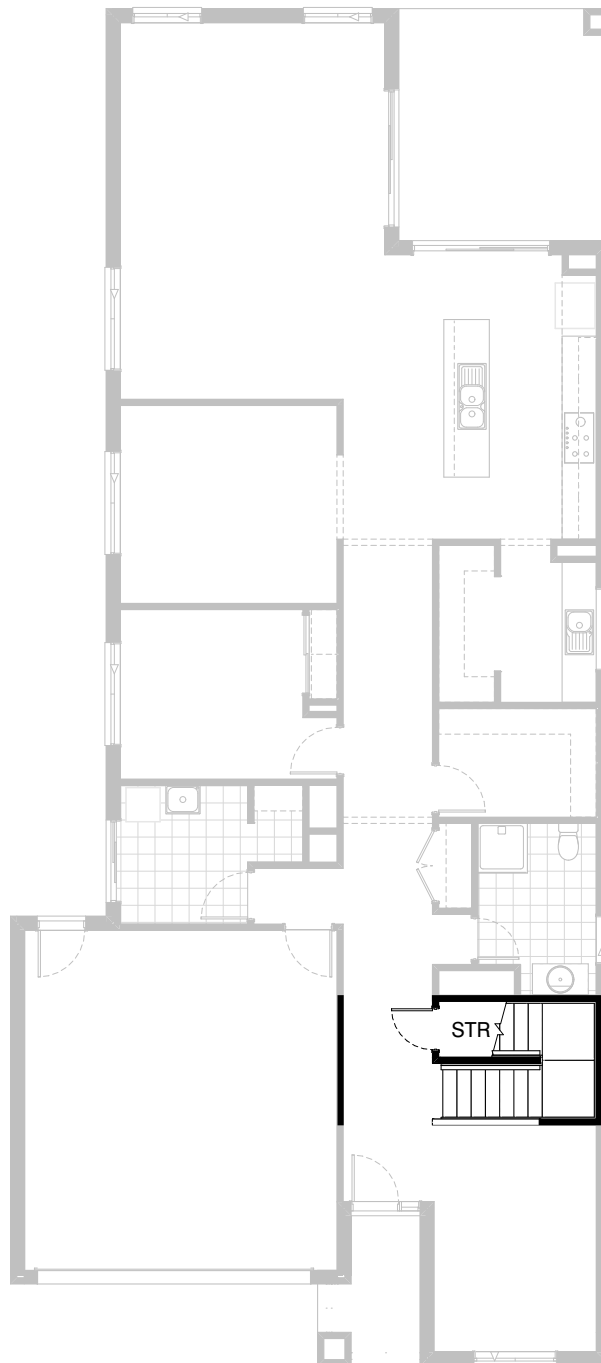


### Option IP1-1 GF

Provide Jetmaster 350TRSI gas fireplace, 400mm off floor level in a 1400mm x 420mm boxed out plaster wall with a 4 sided black fascia to Family room side wall.

FLOORPLAN OPTIONS

 **5**  **3**  **2**



## Option IP1-2 GF

Provide Store room below stair including 720mm flush panel hinged door, plaster lined walls and raked plaster ceiling on battens with square set cornice including additional light point.

**NOTE: Flooring not included**

FLOORPLAN OPTIONS



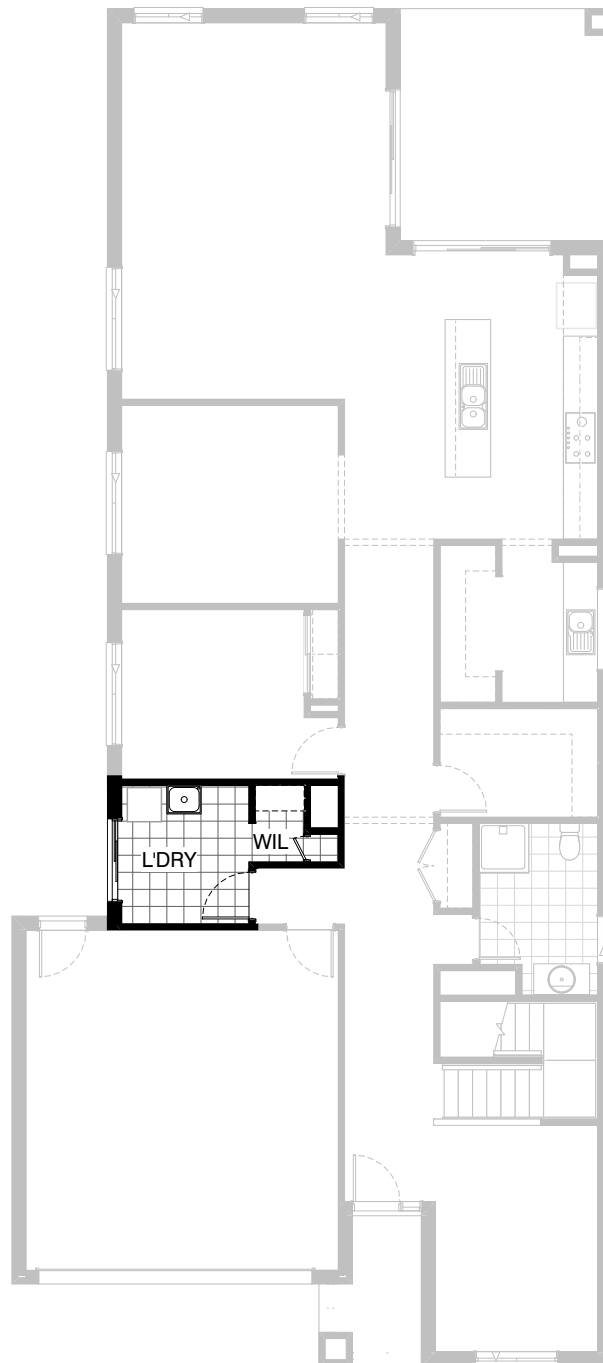
5



3



2



**Option IP1-3 GF**

Provide Laundry Chute with 3no.  
520mm flush panel hinged doors.



FLOORPLAN OPTIONS



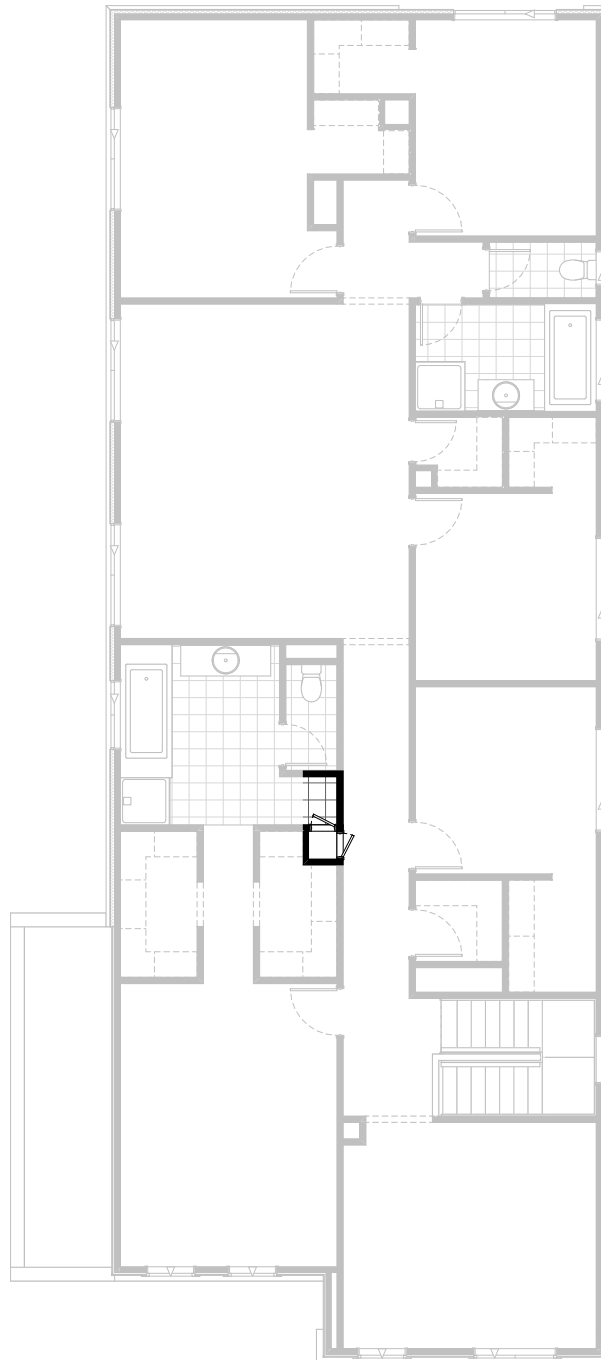
5



3






2

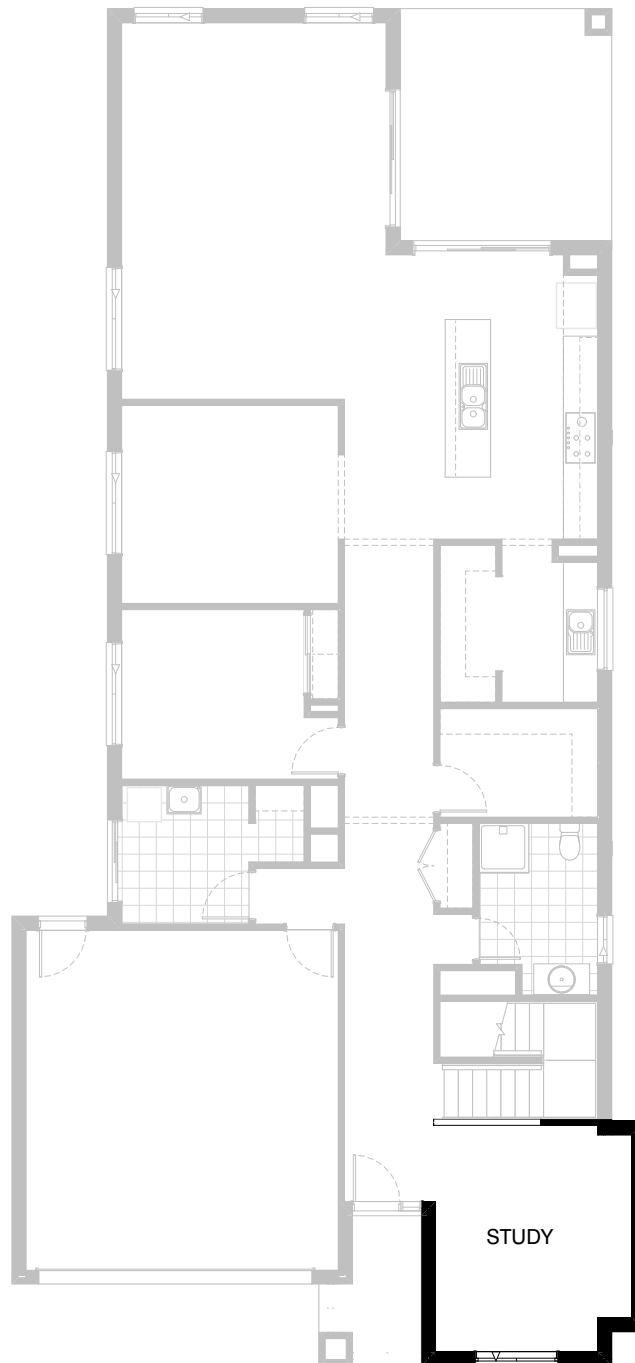


**Option IP1-3 FF**

Provide Laundry Chute with 3no.  
520mm flush panel hinged doors.

FLOORPLAN OPTIONS

 **5**  **3**  **2**



**Option IP1-4 GF**

Provide Study option by extending Study wall width  
by 600mm with brick parapet flat roof above.  
Increases area by 2.22m<sup>2</sup>.  
Increases width by 600mm.

FLOORPLAN OPTIONS



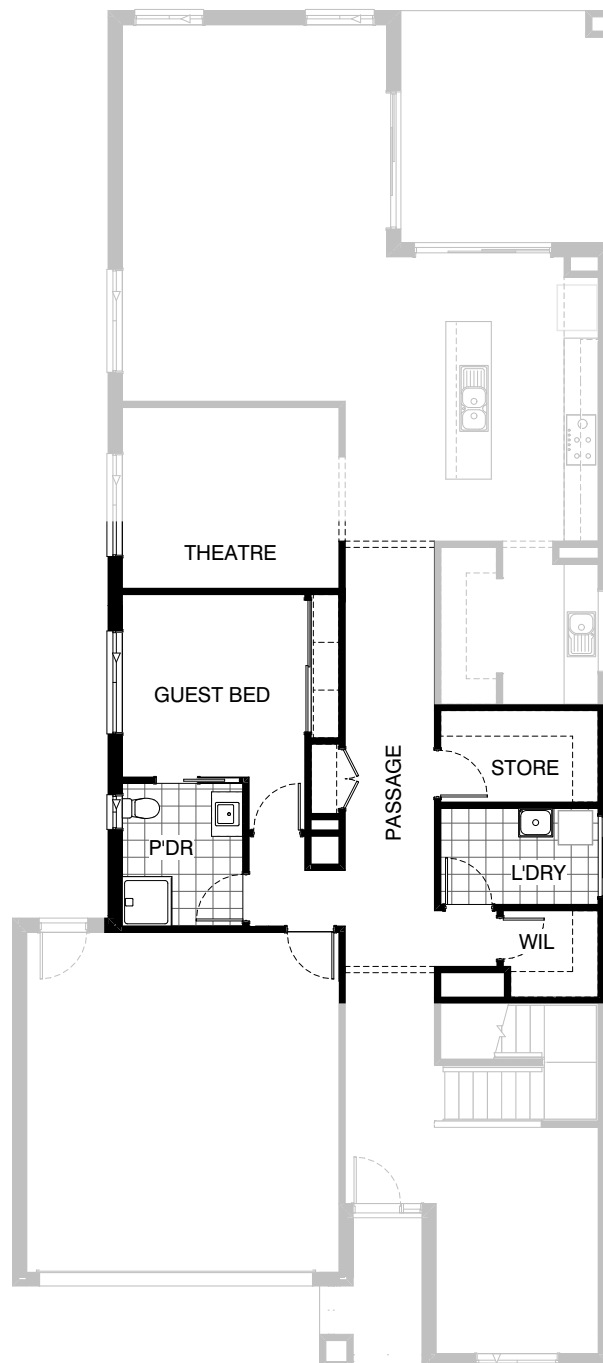
5



3



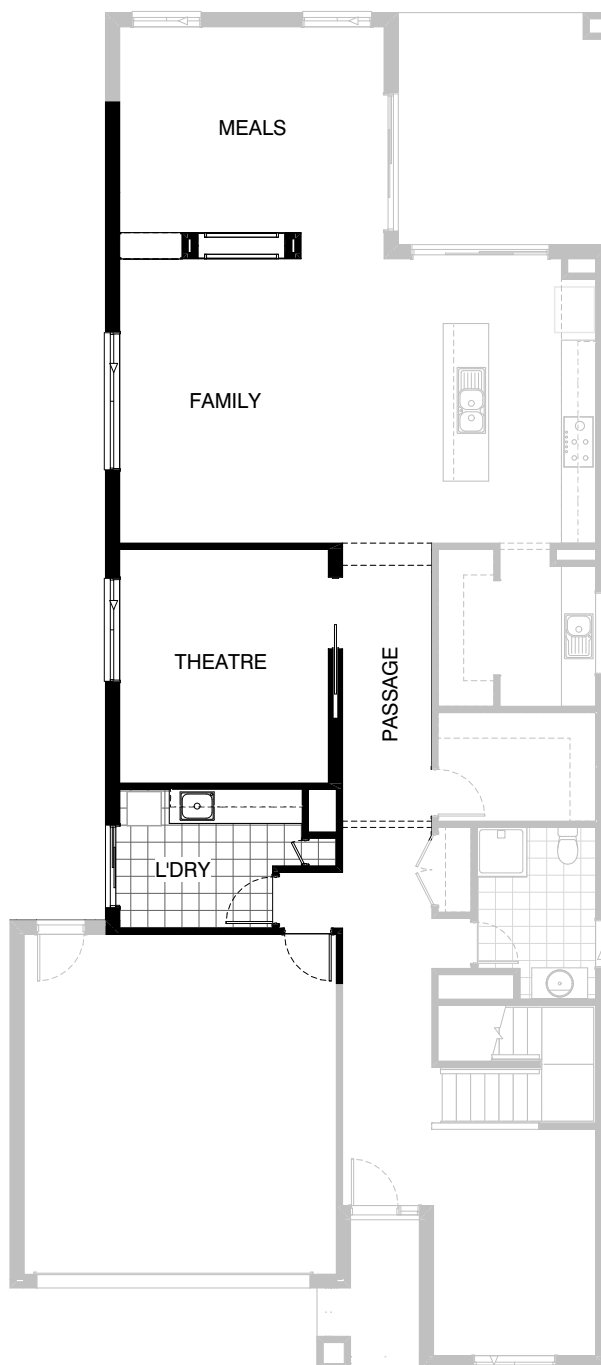
2



## Option IP1-5 GF

Provide Guest Bedroom option in lieu of Gym including additional sliding robe doors with plaster lined robe with 1no. hanging rail and shelf in lieu of standard. Relocate Laundry and W.I.L with Powder and provide additional 1no. 782mm wide vanity unit in lieu of standard 1no. 982mm wide vanity unit, 1no. 820mm flush panel hinged door in lieu of standard 1no. 720mm door, additional 1no. 720mm cavity sliding door and 1no. 1027mm x 610mm aluminum sliding window in lieu of standard 1no. 1800mm x 850mm window. Relocate and reduce Linen cupboard with 2no. 520mm flush panel hinged doors in lieu of standard 2no. 620mm doors.

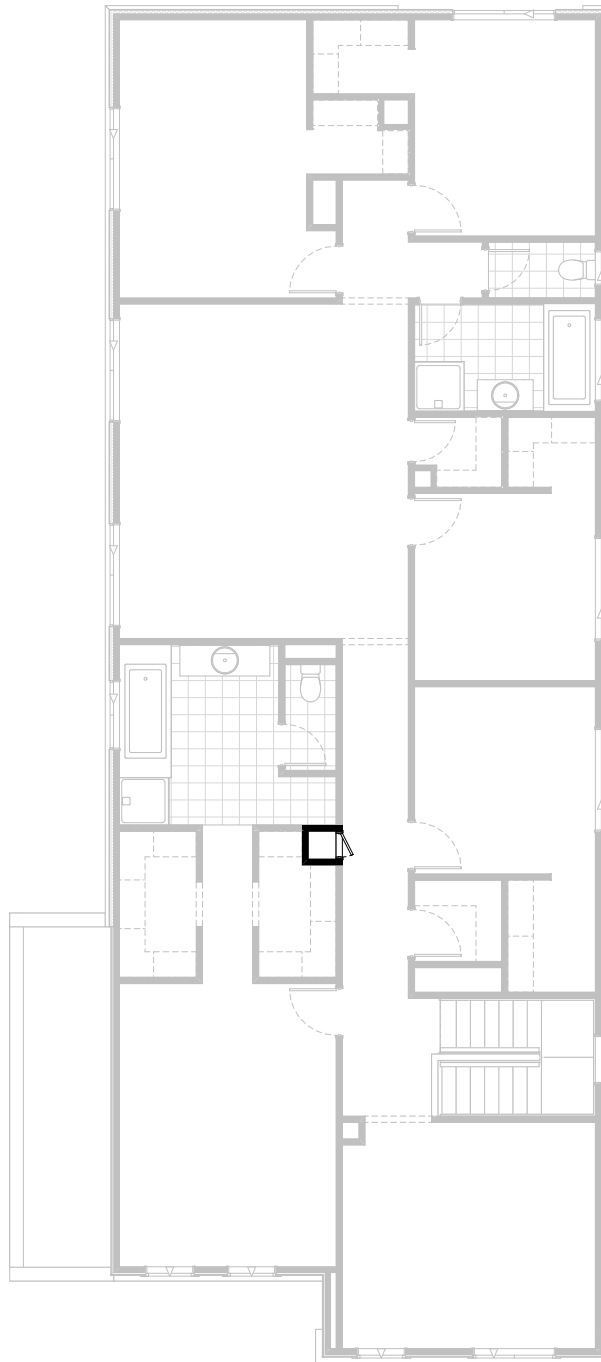
FLOORPLAN OPTIONS



## Option IP1-6 GF

Provide floor plan option by deleting Gym and W.I.L.  
Rearrange Laundry providing 2No. 900mm base cabinets,  
1no. 450mm base cabinet, 2no. 900mm overhead cabinets,  
1no. 450mm open shelf with 2no. shelves, additional tiled  
splashback and bench top to suit with Laundry Chute from  
First Floor. 1220mm cavity sliding door to Theatre in lieu of  
standard bulkhead, Mezzo 48 see-thru fire place to Family / Meals  
with 400mm deep bulkhead and 3no. 450mm floating shelves.  
Delete ASW2018 window to Gym, replace ASW2024 window  
to Family in lieu of standard.

FLOORPLAN OPTIONS



## Option IP1-6 FF

Provide floor plan option by deleting Gym and W.I.L.  
Rearrange Laundry providing 2No. 900mm base cabinets,  
1no. 450mm base cabinet, 2no. 900mm overhead cabinets,  
1no. 450mm open shelf with 2no. shelves, additional tiled  
splashback and bench top to suit with Laundry Chute from  
First Floor. 1220mm cavity sliding door to Theatre in lieu of  
standard bulkhead, Mezzo 48 see-thru fire place to Family / Meals  
with 400mm deep bulkhead and 3no. 450mm floating shelves.  
Delete ASW2018 window to Gym, replace ASW2024 window  
to Family in lieu of standard.

FLOORPLAN OPTIONS



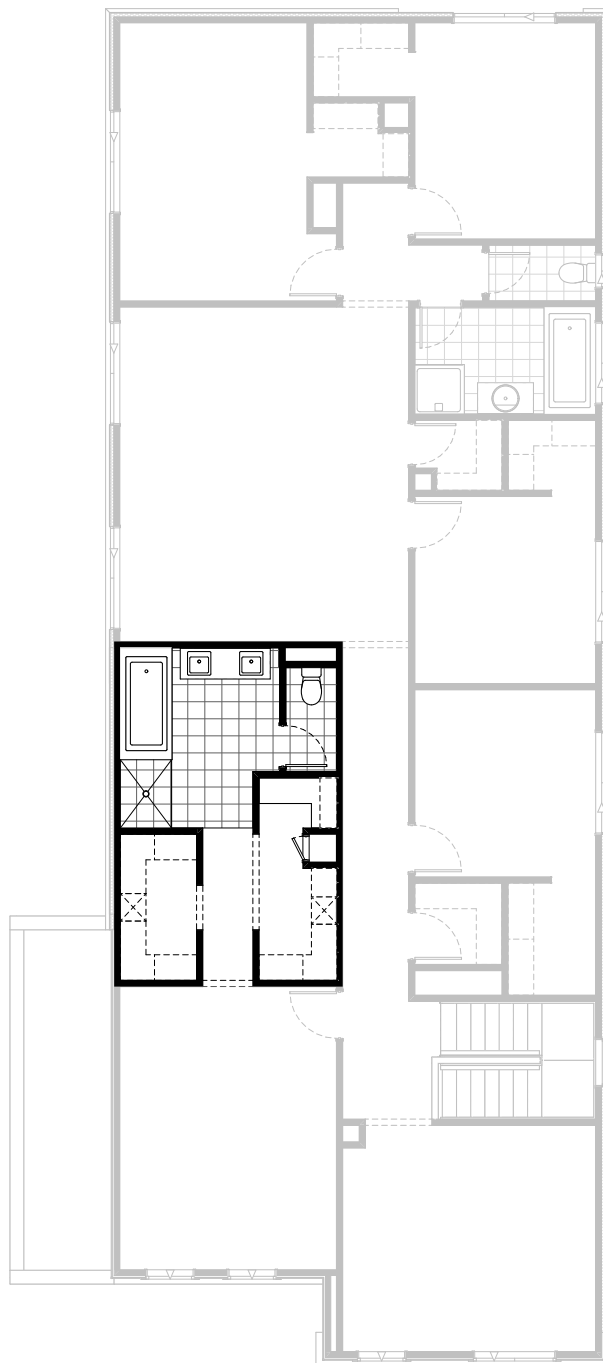
5



3



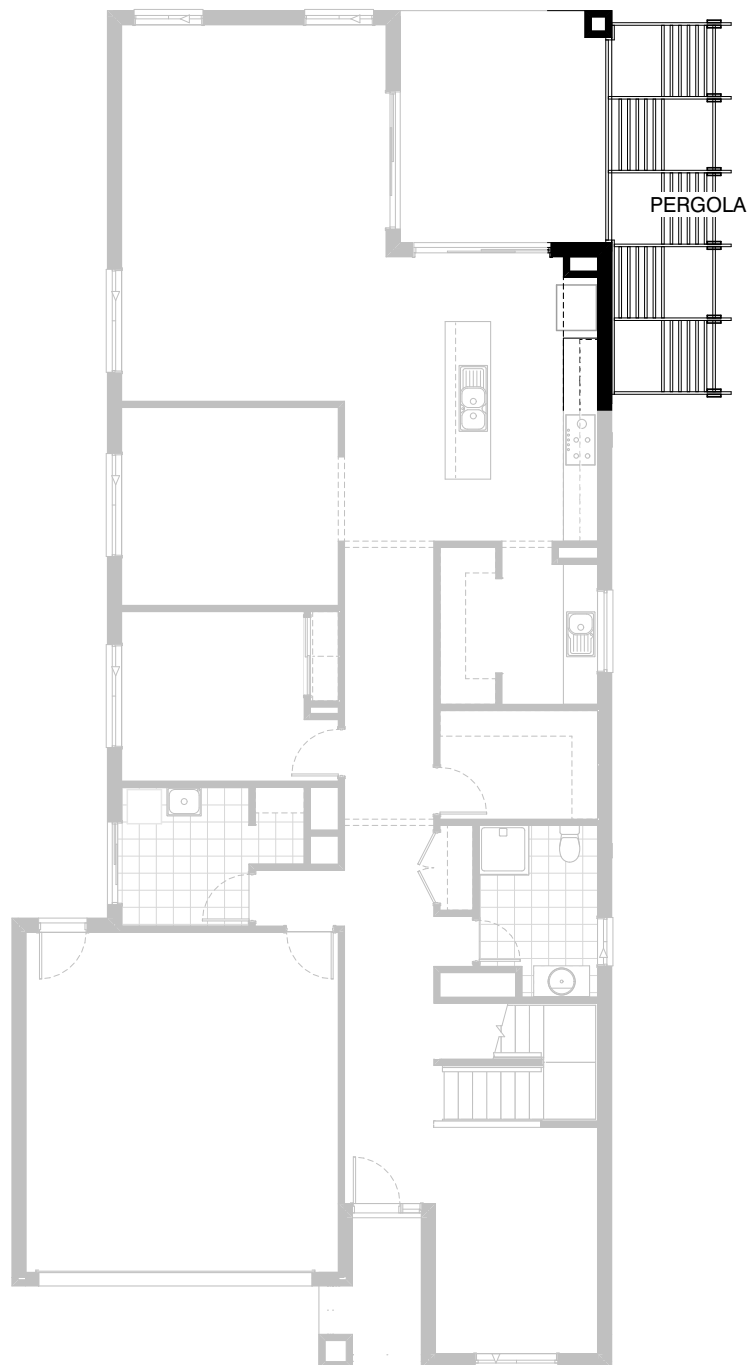
2



## Option IP1-7 FF

Provide Ensuite and W.I.R Option including 1200x900mm tiled shower base, bath & 1582mm vanity with double basins. Extend W.I.R to meet enclosed WC including Laundry Chute and built-in 450mm bench top with 400mm wide open shelves and 3no. 900mm wide drawers. Additional 2no. 450mm wide shelf units to W.I.Rs. 450mm shelves with double hanging rails and shoe shelves.




FLOORPLAN OPTIONS

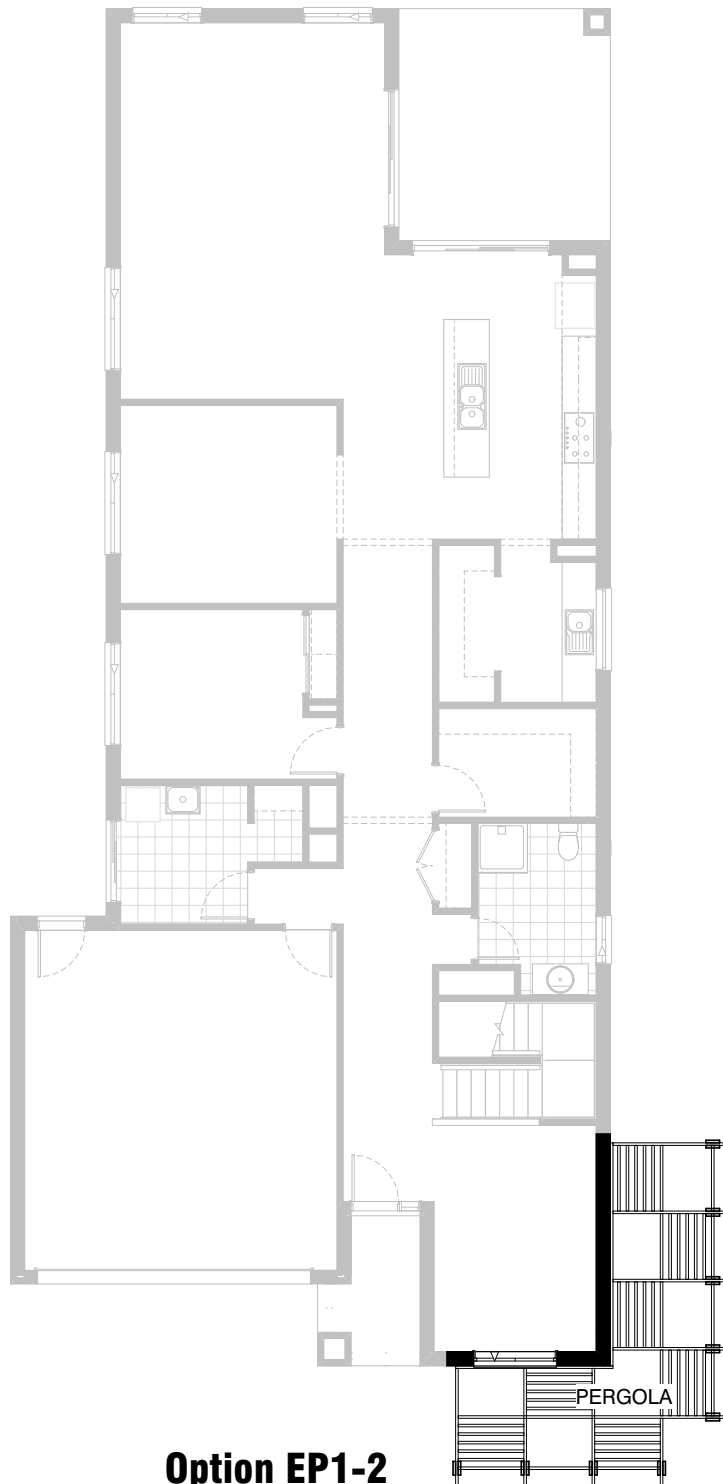


**Option EP1-1**

Provide Pergola Option providing 6no. 2/240x45 treated pine timber posts with 240x45 beams and rafters with 5no. rows of 90x45 treated pine battens as shown.

FLOORPLAN OPTIONS

 **5**  **3**  **2**






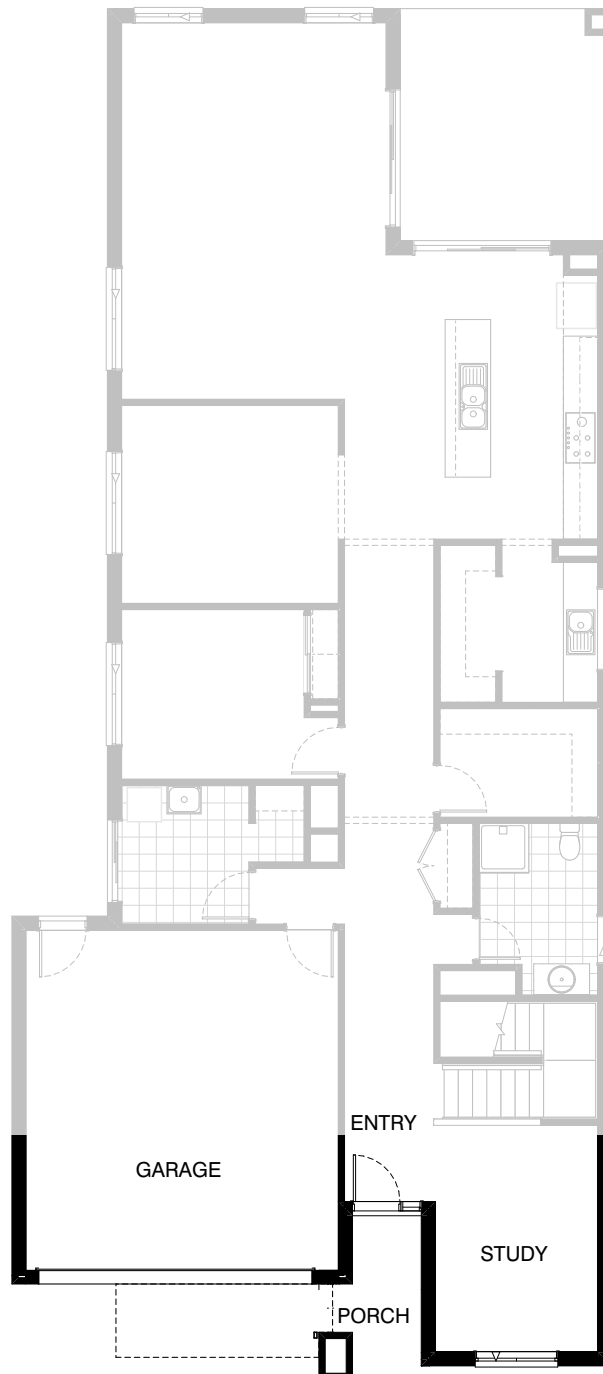
**Option EP1-2**

Provide Pergola Option providing 9no. 2/240x45 treated pine timber posts with 240x45 beams and rafters with 7no. rows of 90x45 treated pine battens as shown.



FLOORPLAN OPTIONS

 **5**  **3**  **2**



**Option BA-1 GF**

Provide Balcony Option.

FLOORPLAN OPTIONS



5



3



2



**Option BA-1 FF**

Provide Balcony Option.

FLOORPLAN OPTIONS



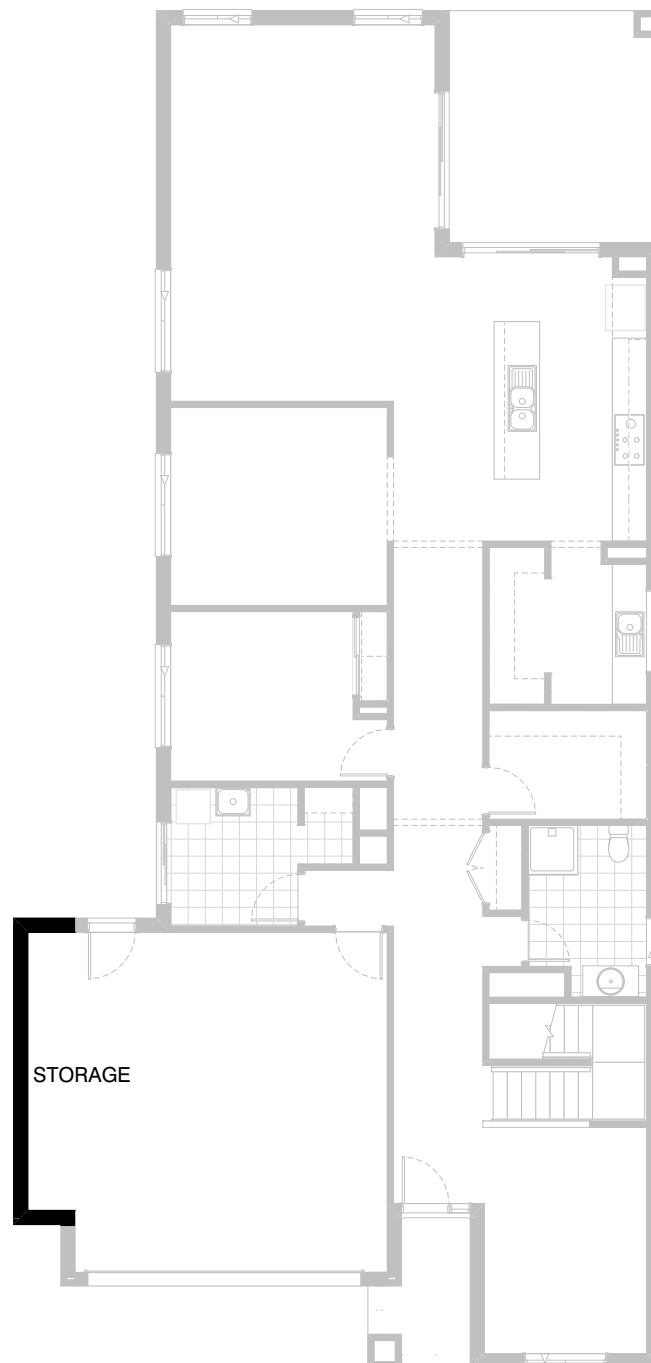
5



3



2



## Option G-1

Provide extension to Garage to  
create additional Storage area.  
Increases area by 4.52m<sup>2</sup>.  
Increases width by 840mm.

FLOORPLAN OPTIONS



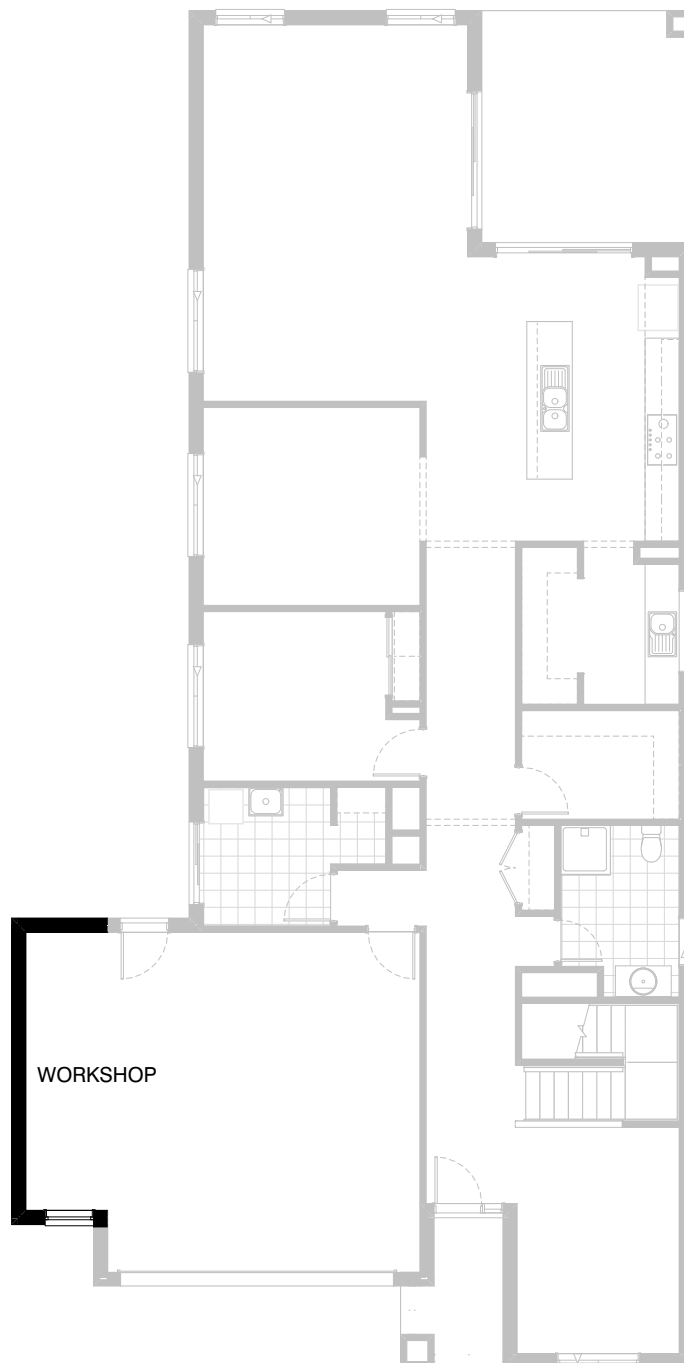
5



3



2



## Option G-2

Provide extension to Garage to create Workshop area including additional window to suit.

Increases area by 7.76m<sup>2</sup>.

Increases width by 1440mm.

FLOORPLAN OPTIONS



5



3



2



### Option G-3

Provide triple car Garage including additional Garage door as per colour selection.  
Increases area by 22.82m<sup>2</sup>.  
Increases width by 3600mm.