



*Make it your own*

*by Choosing between our*

*Lite or Premium*

*Inclusion packages*

*or Create your own.*

*Clients love our flexibility and willingness to create their perfect home.*

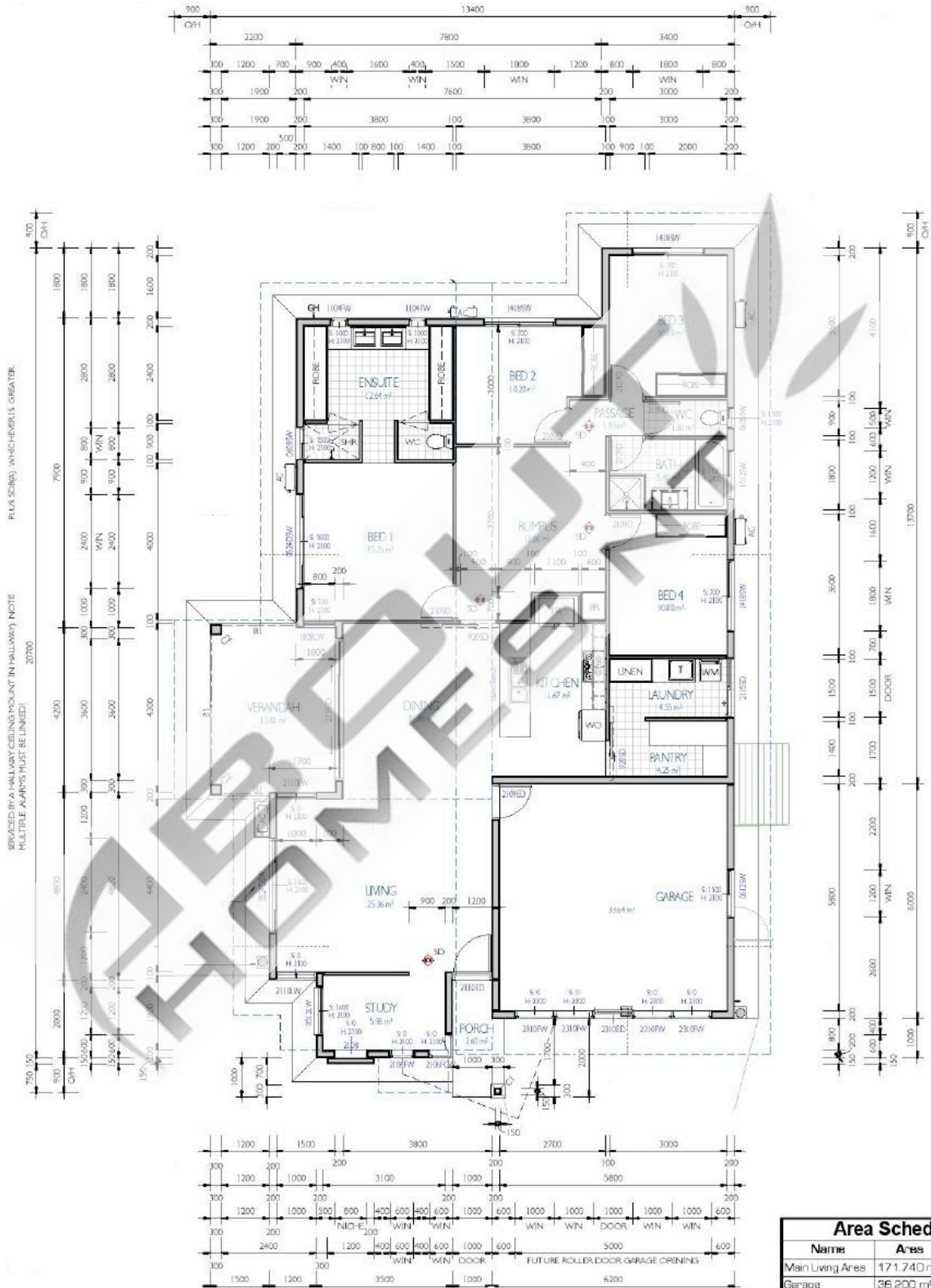


**About Homes NT is your trusted Darwin home builder. We bring over 30 years of building experience to deliver quality homes that are functional and beautiful to Darwin and Palmerston residence.**

# SYKATI 1

HOUSE WIDTH: 13.4M - HOUSE LENGTH: 20.7M - TOTAL FLOOR AREA: 224M<sup>2</sup>

Lite Inclusions: From \$362,000  
Premium Inclusions: From \$375,000

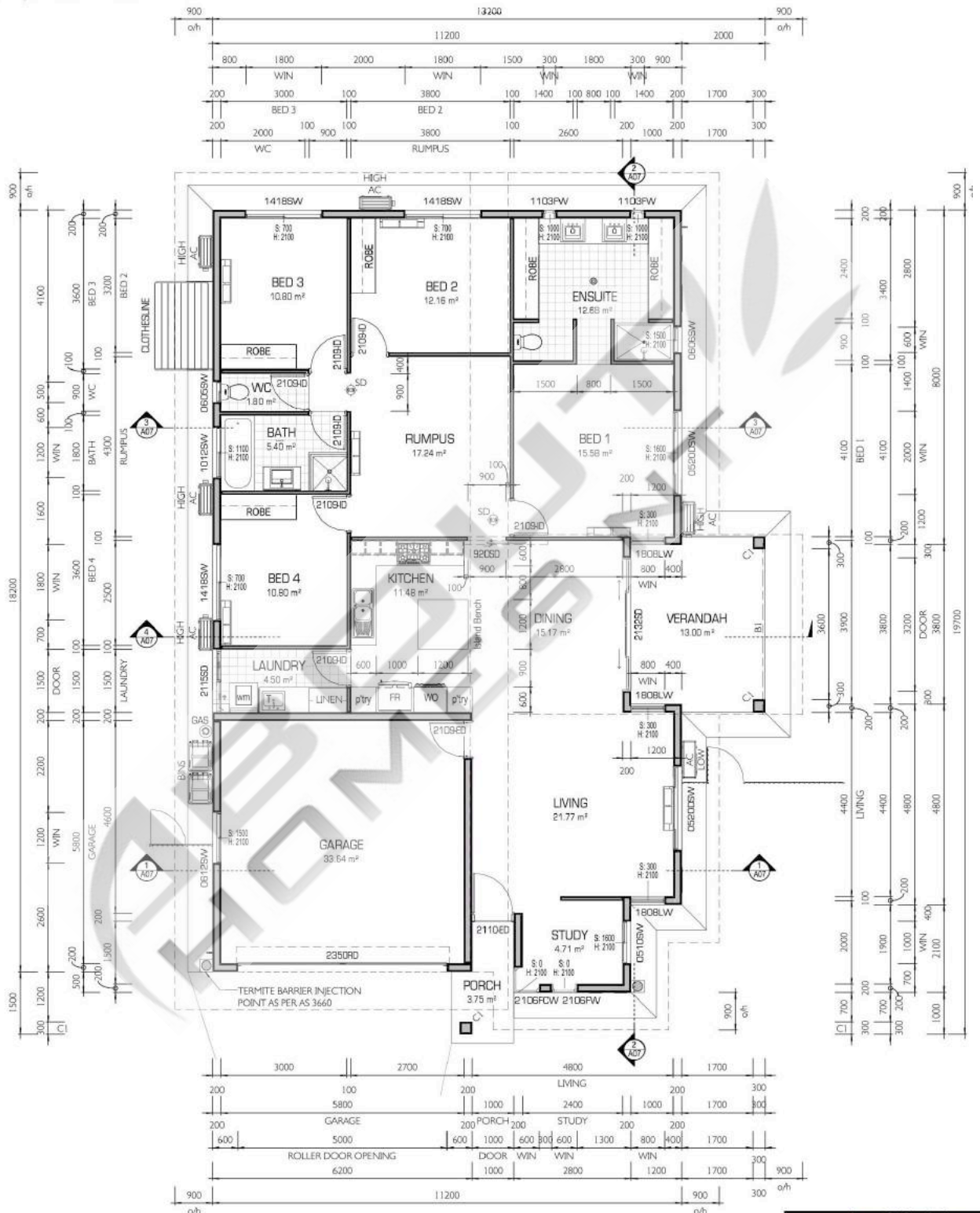


Area Schedule		
Name	Area	Perimeter
Main Living Area	171.740 m <sup>2</sup>	67500
Garage	56.200 m <sup>2</sup>	24400
Verandah	13.810 m <sup>2</sup>	15200
Porch	2.300 m <sup>2</sup>	6500
<b>Grand total</b>	<b>224.050 m<sup>2</sup></b>	

# SYKATI 2

HOUSE WIDTH: 13.2M - HOUSE LENGTH: 19.7M - TOTAL FLOOR AREA: 215.54M<sup>2</sup>

Lite Inclusions: From \$345,000  
 Premium Inclusions: From \$358,000



Area Schedule		
Name	Area	Perimeter
Main Living Area	162.375 m <sup>2</sup>	62900
Garage	33.240 m <sup>2</sup>	24400
Verandah	13.180 m <sup>2</sup>	14800
Porch	3.750 m <sup>2</sup>	8800
Grand total	215.545 m <sup>2</sup>	



# SYKATI 3

HOUSE WIDTH: 11.9M - HOUSE LENGTH: 23.9M - TOTAL FLOOR AREA: 232.54M<sup>2</sup>

Lite Inclusions: From \$373,500  
 Premium Inclusions: From \$386,500

