

INSPIRATIONS SERIES

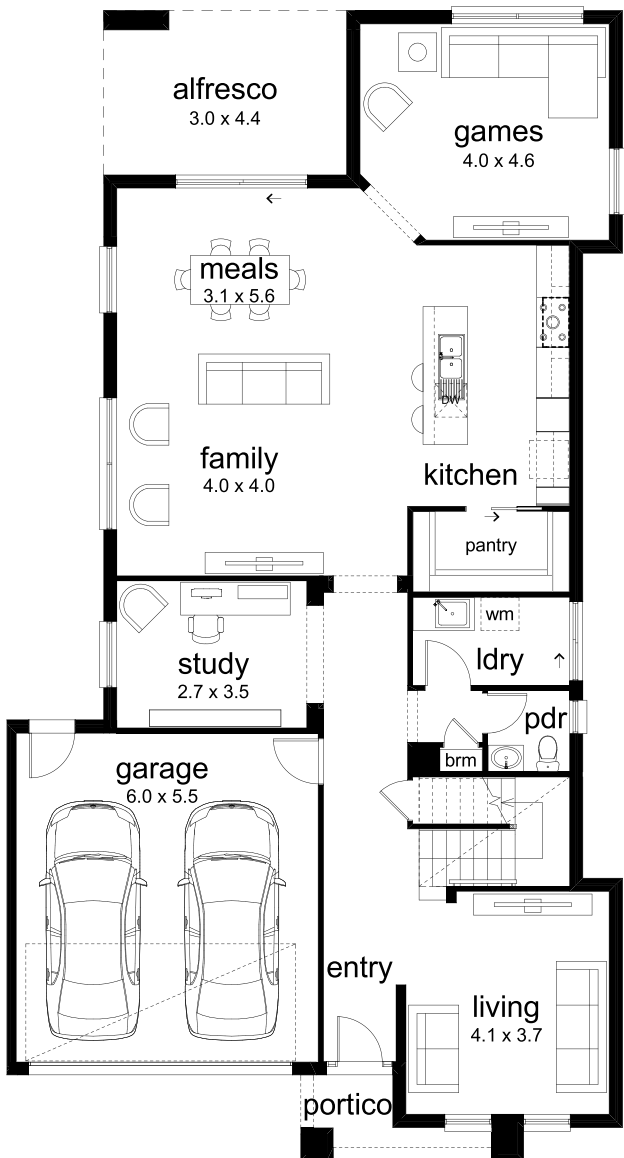
MARSDEN 363



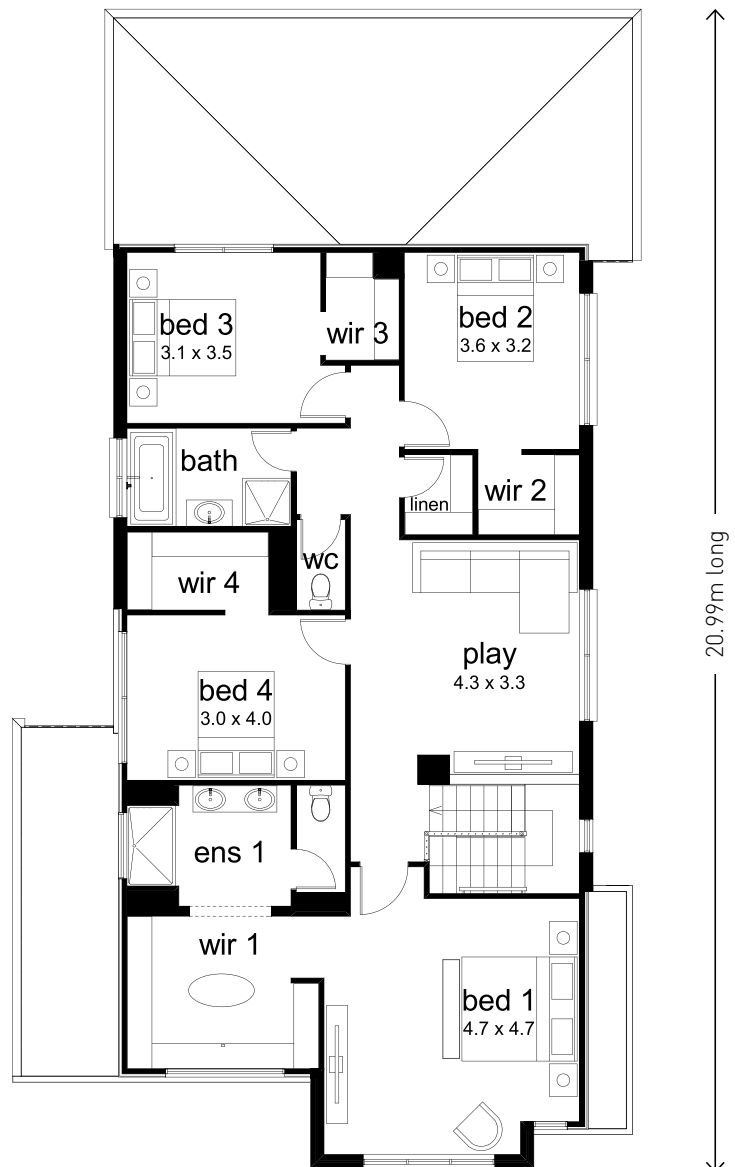
FITS LOT DEPTH OF **28M**

FITS LOT WIDTHS OF **12.5M**

Total	333.70m ²	35.92sq
Living	279.94m ²	30.13sq
Portico	4.05m ²	0.44sq
Alfresco	13.32m ²	1.43sq
Garage	36.38m ²	3.92sq



← 11.31m wide →



Go to dennisfamily.com.au or call **1800 DENNIS** for more information.

Lot width and depth subject to fall of land. Floorplans and dimensions based on Classic façade and may alter depending on façade chosen and may not reflect developer guidelines. Copyright Dennis Family Intellectual Property Pty Ltd © 2020. Images may include optional, additional cost upgrades such as façade render, feature tiles, driveway, garage doors and concrete paths, and items not supplied by Dennis Family Homes such as landscaping, decking, water features, retaining walls, window furnishings, light fittings, furniture and decorator items unless otherwise specified. Dennis Family Homes Pty Ltd ACN 056254249 is a registered building practitioner. Building licence number CDB-U 49195 (Vic) and 173511C (NSW).



dennis family homes

a family building homes for families™

INSPIRATIONS SERIES

MARSDEN 363 facade options



Classic facade



Tempo facade



Resort facade



Resort Glass facade



Verve facade



Verve Glass facade

Go to dennisfamily.com.au or call **1800 DENNIS** for more information.

Lot width and depth subject to fall of land. Floorplans and dimensions based on Classic facade and may alter depending on facade chosen and may not reflect developer guidelines. Copyright Dennis Family Intellectual Property Pty Ltd © 2020. Images may include optional, additional cost upgrades such as facade render, feature tiles, driveway, garage doors and concrete paths, and items not supplied by Dennis Family Homes such as landscaping, decking, water features, retaining walls, window furnishings, light fittings, furniture and decorator items unless otherwise specified. Dennis Family Homes Pty Ltd ACN 056254249 is a registered building practitioner. Building licence number CDB-U 49195 (Vic) and 173511C (NSW).



dennis family homes

a family building homes for families™

INSPIRATIONS SERIES

MARSDEN 363 facade options

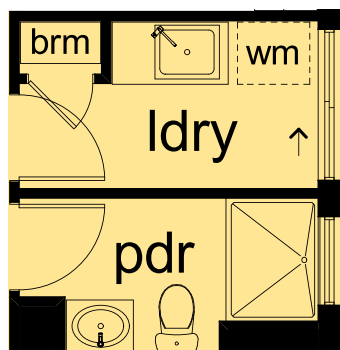


Hamptons facade

MARSDEN 363 floorplan option

SHOWER TO POWDER ROOM

Include shower to Ground Floor Powder Room.



Go to dennisfamily.com.au or call **1800 DENNIS** for more information.

Lot width and depth subject to fall of land. Floorplans and dimensions based on Classic façade and may alter depending on façade chosen and may not reflect developer guidelines. Copyright Dennis Family Intellectual Property Pty Ltd © 2020. Images may include optional, additional cost upgrades such as façade render, feature tiles, driveway, garage doors and concrete paths, and items not supplied by Dennis Family Homes such as landscaping, decking, water features, retaining walls, window furnishings, light fittings, furniture and decorator items unless otherwise specified. Dennis Family Homes Pty Ltd ACN 056254249 is a registered building practitioner. Building licence number CDB-U 49195 (Vic) and 173511C (NSW).



dennis family homes

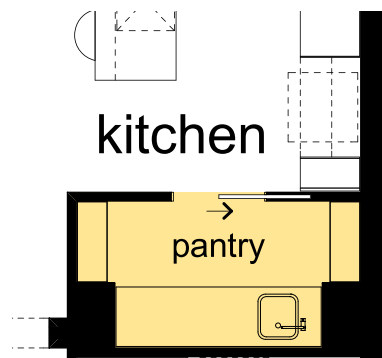
a family building homes for families™

INSPIRATIONS SERIES

MARSDEN 363 pantry options

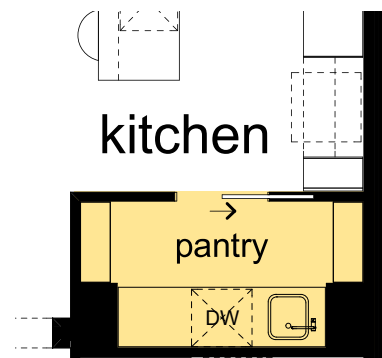
PANTRY 1

Includes single bowl sink.



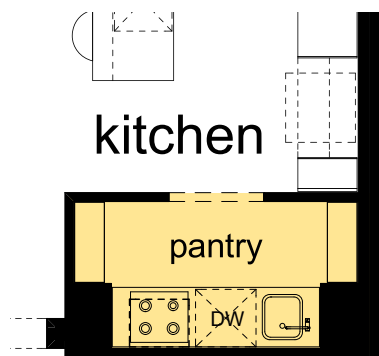
PANTRY 2

Includes single bowl sink and provision for dishwasher.



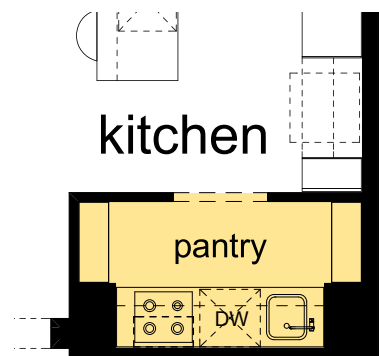
PANTRY 3

Includes gas cooktop, canopy rangehood, single bowl sink and provision for dishwasher.



PANTRY 4

Includes a gas cooktop, concealed rangehood, single bowl sink and provision for a dishwasher.



Go to dennisfamily.com.au or call **1800 DENNIS** for more information.

Lot width and depth subject to fall of land. Floorplans and dimensions based on Classic façade and may alter depending on façade chosen and may not reflect developer guidelines. Copyright Dennis Family Intellectual Property Pty Ltd © 2020. Images may include optional, additional cost upgrades such as façade render, feature tiles, driveway, garage doors and concrete paths, and items not supplied by Dennis Family Homes such as landscaping, decking, water features, retaining walls, window furnishings, light fittings, furniture and decorator items unless otherwise specified. Dennis Family Homes Pty Ltd ACN 056254249 is a registered building practitioner. Building licence number CDB-U 49195 (Vic) and 173511C (NSW).



dennis family homes

a family building homes for families™