

Mansfield 256 - 4 Bedroom

25.6

SQ

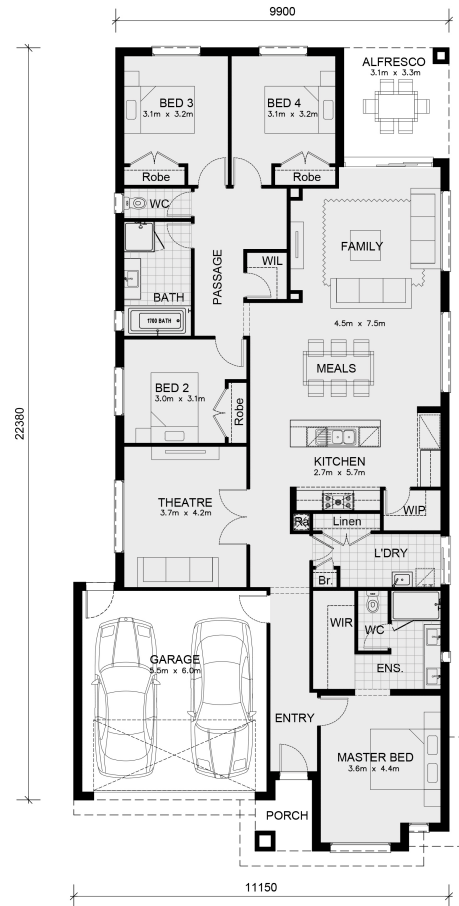
12.5

M Minimum Frontage



A clever design that accommodates the whole family

The distinctive feature of the Mansfield is its large open kitchen, family & meals area that open onto the alfresco at the rear of the home, great for entertaining. Complete with a theatre & generous sized study area, the Mansfield also features a luxurious master suite privately located at the front of the home, while 3 additional bedrooms with walk in robes are cleverly zoned to the rear of the home. If you're looking for a functional & stylish home that allows you to spend more time entertaining, the Mansfield is the home for you.



Living Area	187.6 sqm	20.2 sq
Garage Area	36.5 sqm	3.9 sq
Porch Area	3.3 sqm	0.4 sq
Alfresco Area	10.3 sqm	1.1 sq
Total Area	237.7 sqm	25.6 sq