




Total squares **28.9sq**

 **4**  **2**  **2**



Facades available:

Drysdale, Arkley, Dowd, Haring
Nolan, Alpine, Woodland, Felix

Overall home width 12.59m

Overall home length 23.99m

Residence	212.9m ²	22.9sq
Garage	36.3m ²	3.9sq
Porch	6.8m ²	0.7sq
Alfresco	12.4m ²	1.3sq
Total	268.4m²	28.9sq

FLOORPLAN OPTIONS

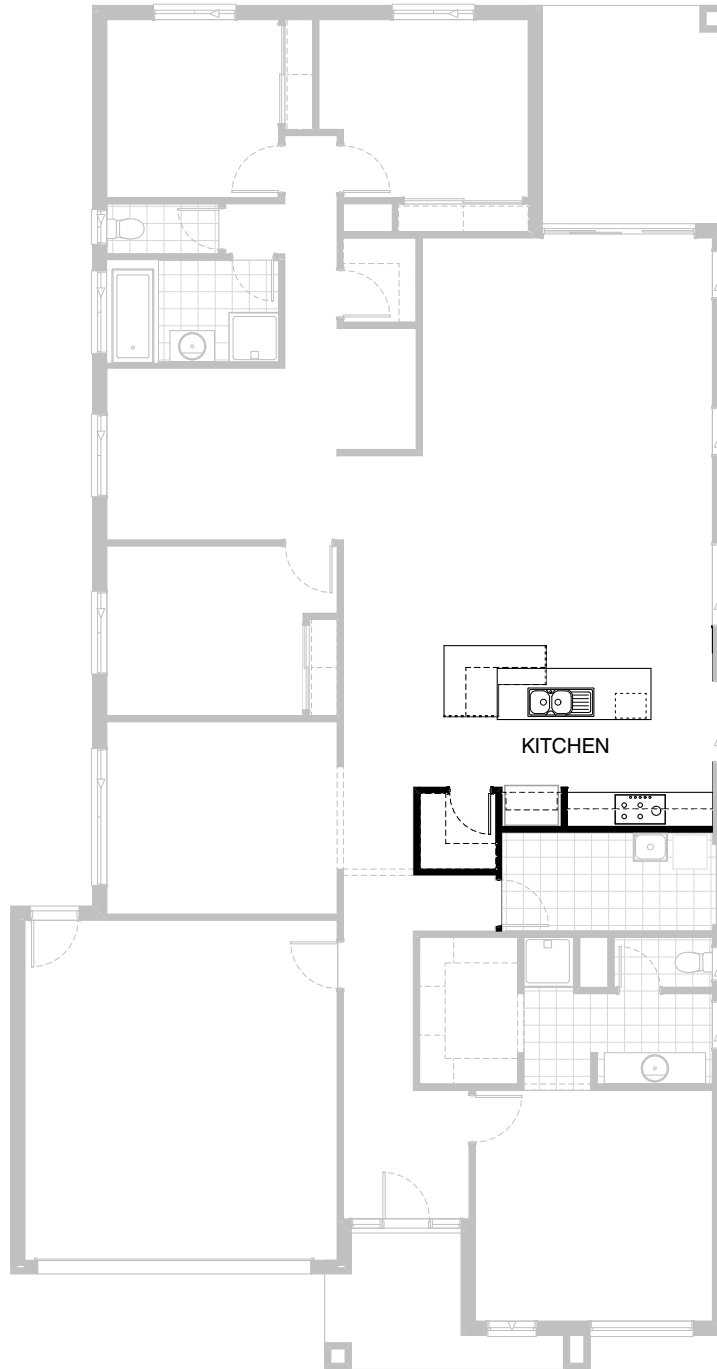
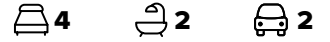
All available ready-to-go floorplan options for this design can be viewed on the following pages, or visit www.burbank.com.au.

Listed details based on Drysdale façade floorplan (illustrated)

*Copyright conditions. All photos and illustrations are representative only. Floor plans and specifications may be varied by Burbank without notice, the dimensions are diagrammatic only and a Building Contract with final drawings will display correct dimensions and detail. All designs are the property of Burbank and must not be used, reproduced, copied or varied, wholly or in part without written permission from an authorised Burbank representative. Copyright Burbank Australia Pty Ltd. ABN 91 007 099 872. Builders Registration Number CDB-U-52603.

Call 13 BURBANK
Visit burbank.com.au

FLOORPLAN OPTIONS





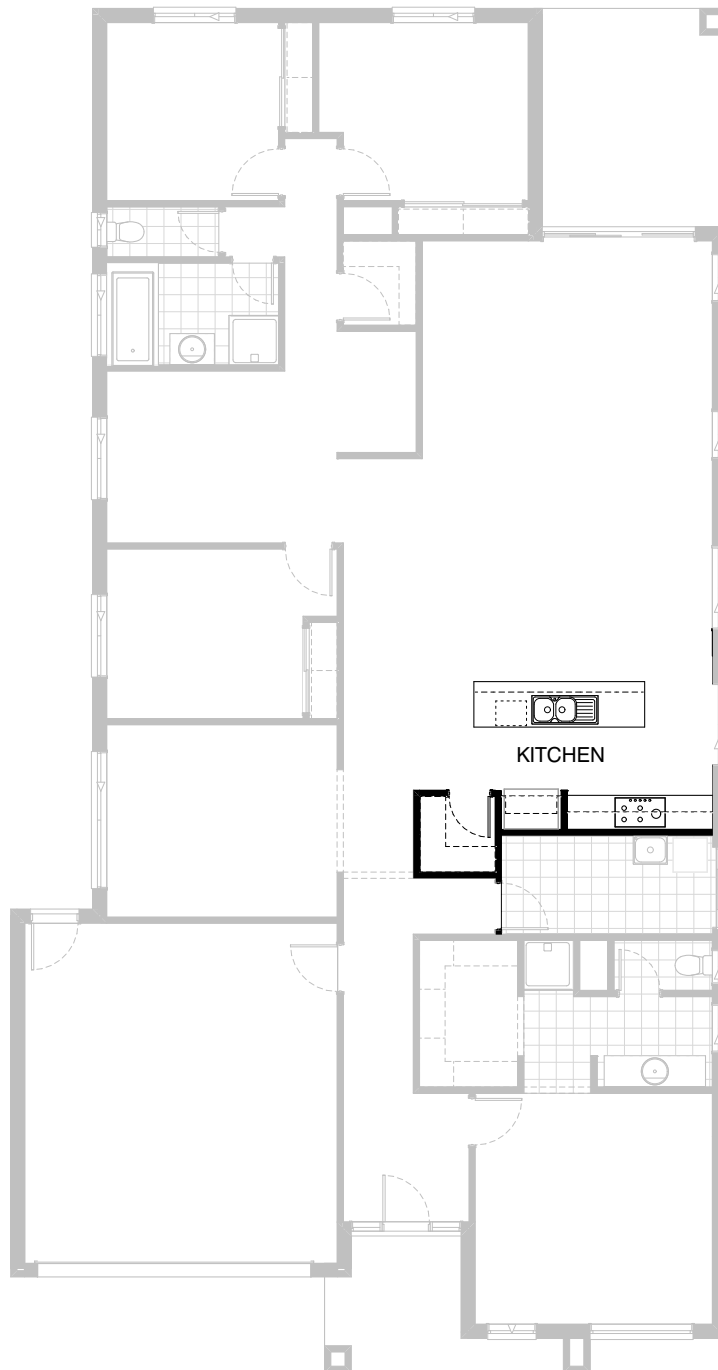
Option K-1

Provide Kitchen upgrade with revised base cupboard layout to island bench. Increase width of island bench to 900mm with additional 1no. laminated microwave provision, 1no. DW provision, 3no. 900mm base cupboards, 1no. 450mm drawers, 1no. laminated shelf above Ref. space, 1no. 900mm under bench oven, 1no. 900mm hotplate, 1no. 900mm retractable rangehood. 2no. 800mm base cupboards, 2no. 800mm overhead cupboards and decrease W.I.P width by 90mm to suit. Provide 1800mm long by 1250mm wide x 20mm stone table to end of island bench, 750mm high with wrap down end panels to servery only.

*Copyright conditions. All photos and illustrations are representative only. Floor plans and specifications may be varied by Burbank without notice, the dimensions are diagrammatic only and a Building Contract with final drawings will display correct dimensions and detail. All designs are the property of Burbank and must not be used, reproduced, copied or varied, wholly or in part without written permission from an authorised Burbank representative. Copyright Burbank Australia Pty Ltd. ABN 91 007 099 872. Builders Registration Number CDB-U-52603.

FLOORPLAN OPTIONS




 **4**  **2**  **2**

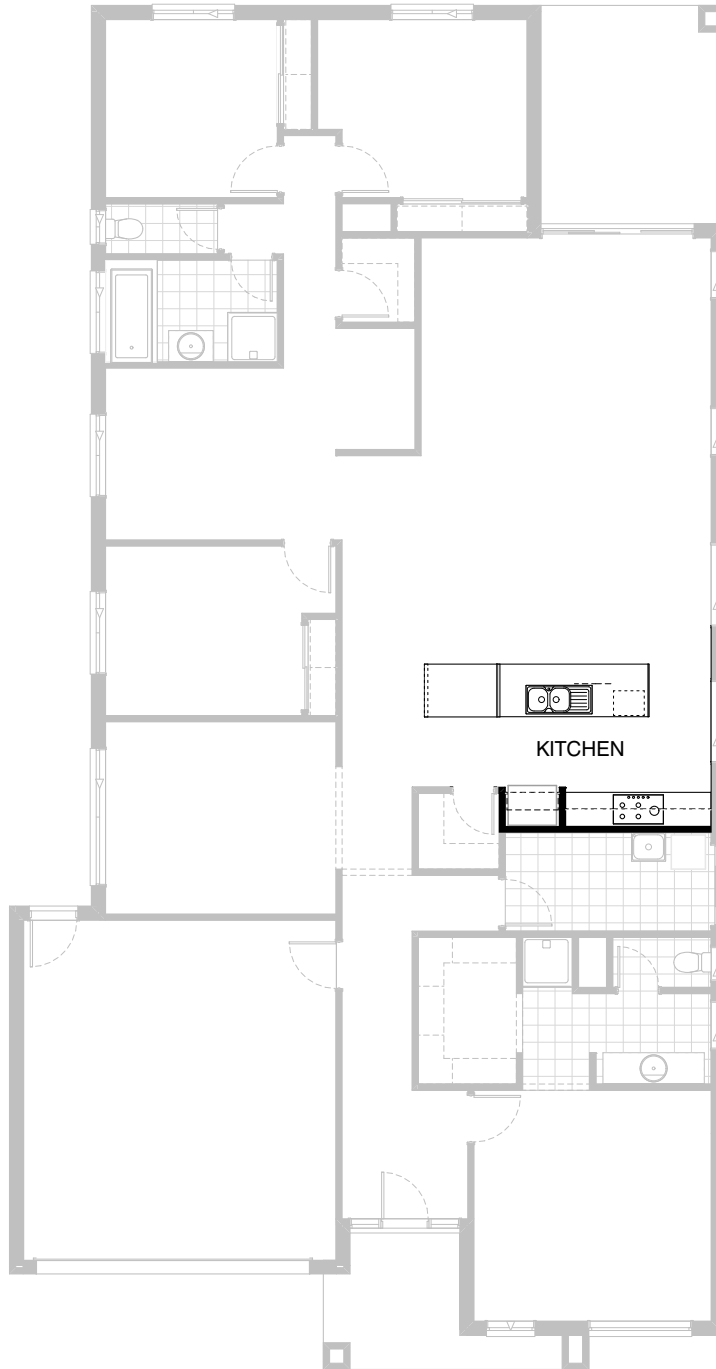


Option K-2

Provide Kitchen upgrade to include reducing WIP 100mm and add 90mm to Kitchen cabinetry and 100mm into Refrigerator space. Provide 1no. 900mm base cabinet, 1no. 300mm base cabinet, 1no. 632mm MW provision with pot drawer below, and 1no. four drawer below, and 1no. four drawer bank to island bench. Provide 2no. 800mm overhead cabinets, 2no. 800mm base cabinets and laminated open shelf above refrigerator space.

FLOORPLAN OPTIONS


 **4**  **2**  **2**

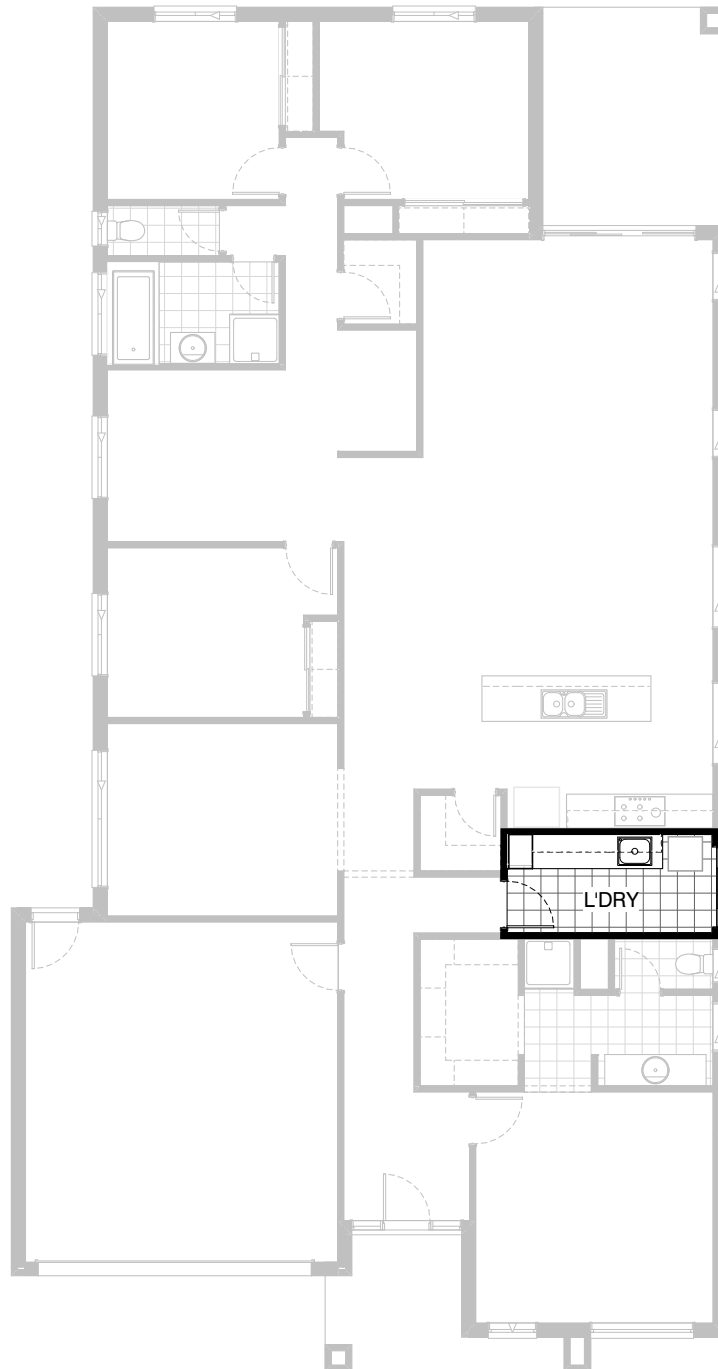


Option K-3

Provide 2no. 800mm base cabinets, 2no. 800mm overhead cabinets including laminated open shelf above refrigerator space. Provide 20mm stone bench top 900mm wide with 20mm stone waterfall end panel. Provide 2no. 900mm x 300mm deep cupboards to island bench and 3 x 792mm wide open shelves. Provide 900mm base cabinet, laminated MW provision with pot drawer below, 1no. dishwasher provision and 1no. four drawer bank to island bench including 60mm raised stone bench top with 60mm stone waterfall end panel.

FLOORPLAN OPTIONS




 **4**  **2**  **2**

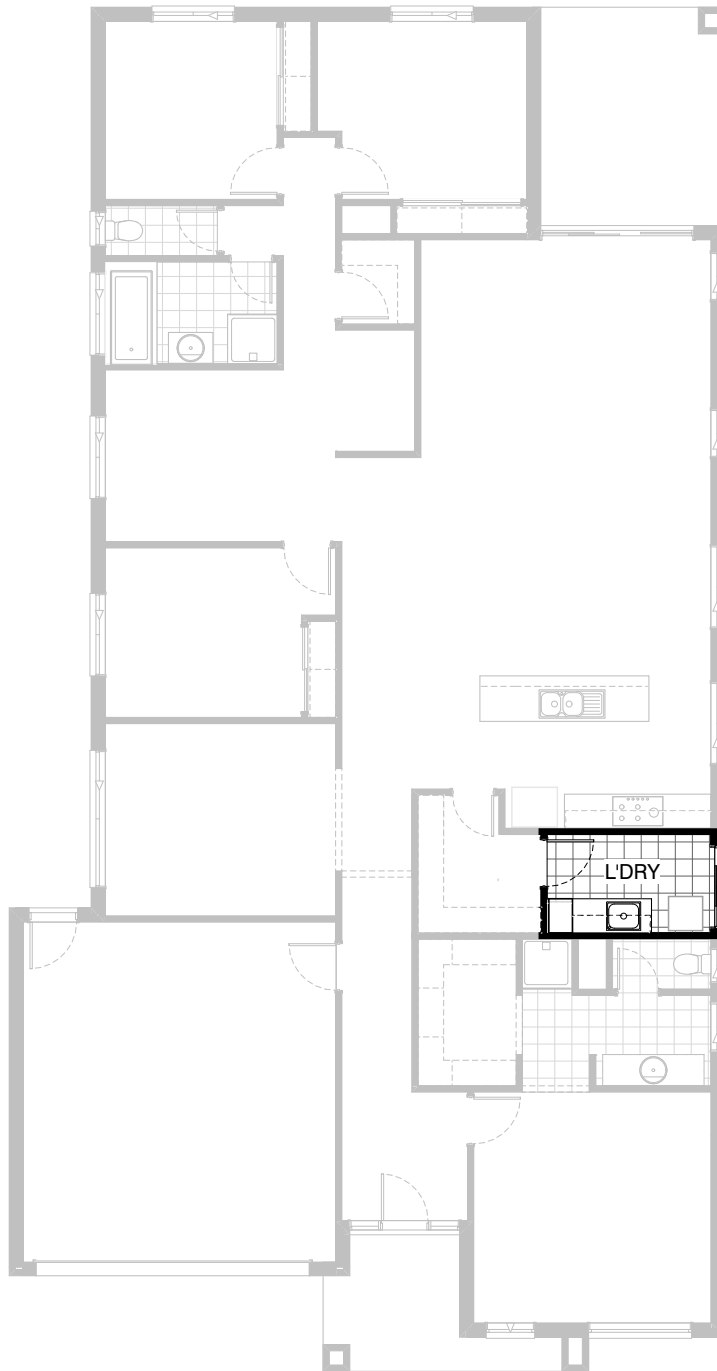


Option LD-1

Provide Laundry Option with additional 400mm laminate broom cupboard, 1no. 450mm base cupboard, 2no. 900mm base cupboards, 1no. 450mm overhead cupboard and 2no. 900mm overhead cupboards with additional tiled splashback and bench top to suit.

FLOORPLAN OPTIONS

 **4**  **2**  **2**




Option LD-2

Provide Laundry Option with additional 400mm laminate broom cupboard, 1no. 450mm base cupboard, 1no. 900mm base cupboard, 1no. 450mm overhead cupboard and 1no. 900mm overhead cupboard with additional tiled splashback and bench top to suit.

NOTE: Only available with IP1-4

FLOORPLAN OPTIONS




 **4**  **2**  **2**



Option ENS-1

Provide Ensuite Option with 1500mm x 900mm tiled shower base I.L.O 900mm x 900mm polymarble showerbase, 2no. basins to vanity unit & remove void between shower and WC.

FLOORPLAN OPTIONS




 **4**  **2**  **2**



Option IP1-1

Provide 3no. 400mmH x 1420mmW. x 430mmD.
Niches to Bed 4.

FLOORPLAN OPTIONS




 **4**  **2**  **2**

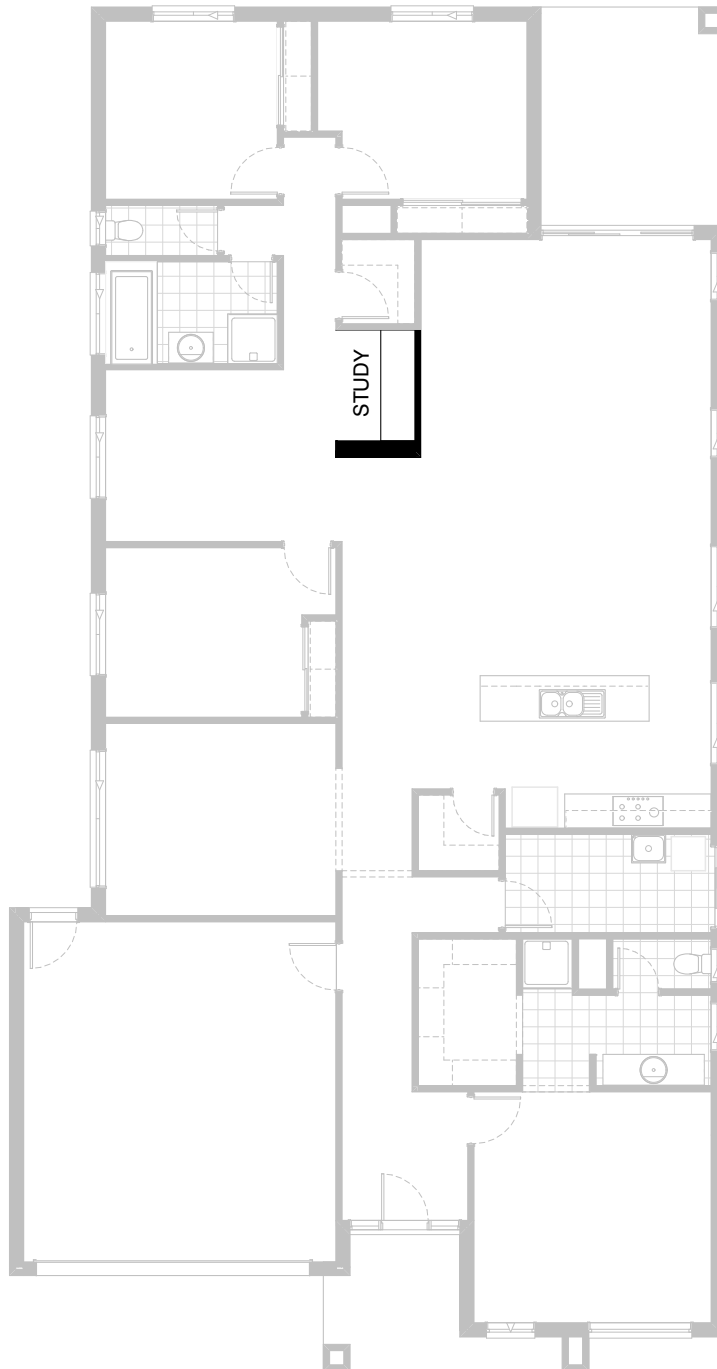


Option IP1-2

Provide 3no. 400mm x 45mm thick
shelves to Bed 4.

FLOORPLAN OPTIONS

 **4**  **2**  **2**

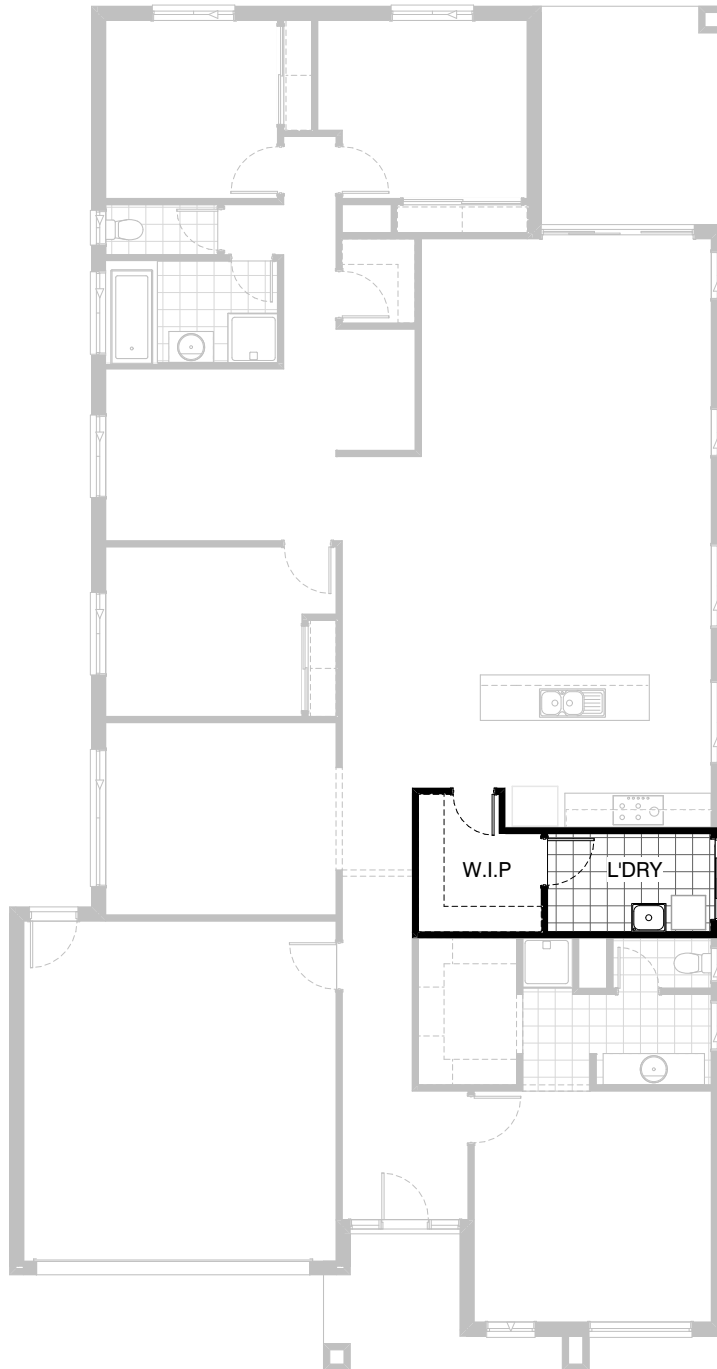


Option IP1-3

Provide Study upgrade to include
32mm laminate shelf with 450mm
wide drawers and 270mm stud wall.

FLOORPLAN OPTIONS

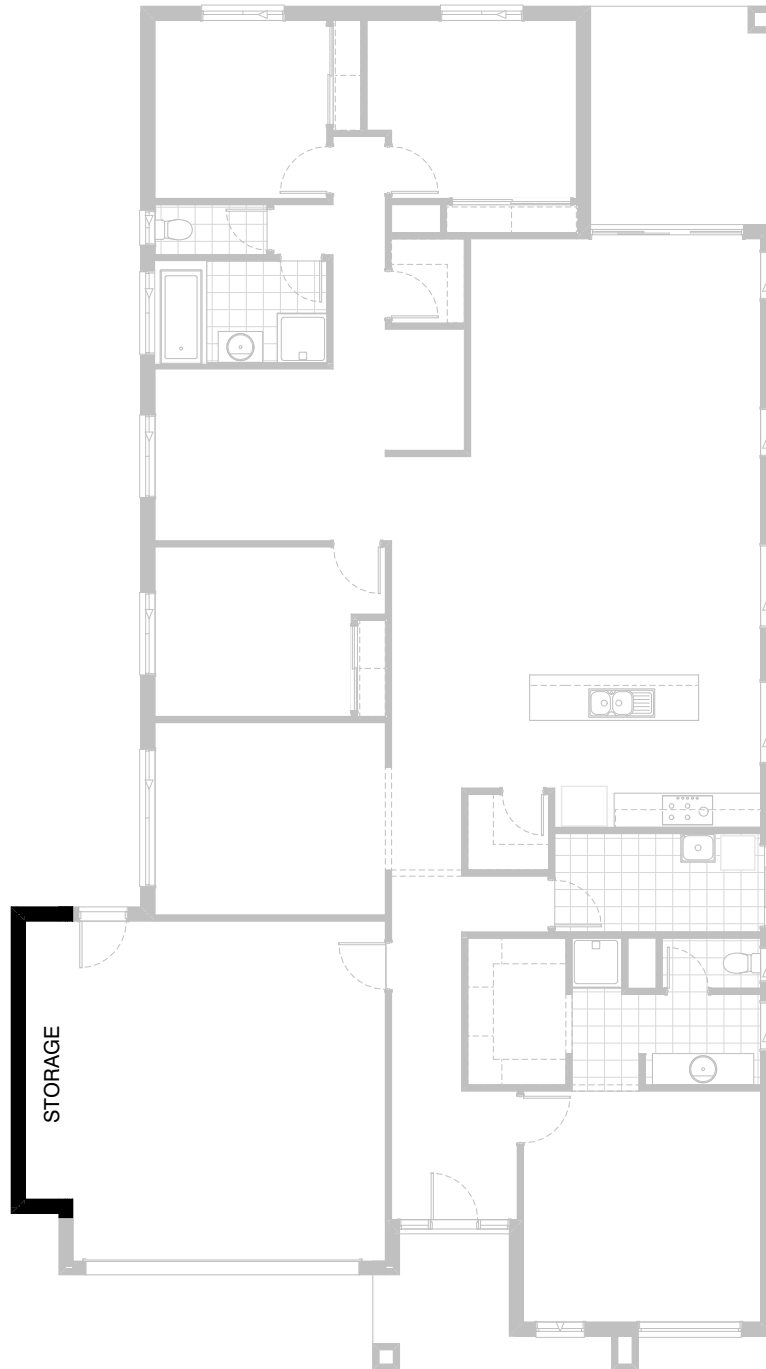
 **4**  **2**  **2**



Option IP1-4

Provide W.I.P upgrade by removing Laundry Passage and incorporate into W.I.P, decrease Laundry by 700mm and increase W.I.P, flip Laundry fixtures including sliding door and move sliding door 120mm to the rear of the home. Provide additional shelving to W.I.P and 820mm flush panel door in lieu of 720mm. Not available with LD1.




FLOORPLAN OPTIONS

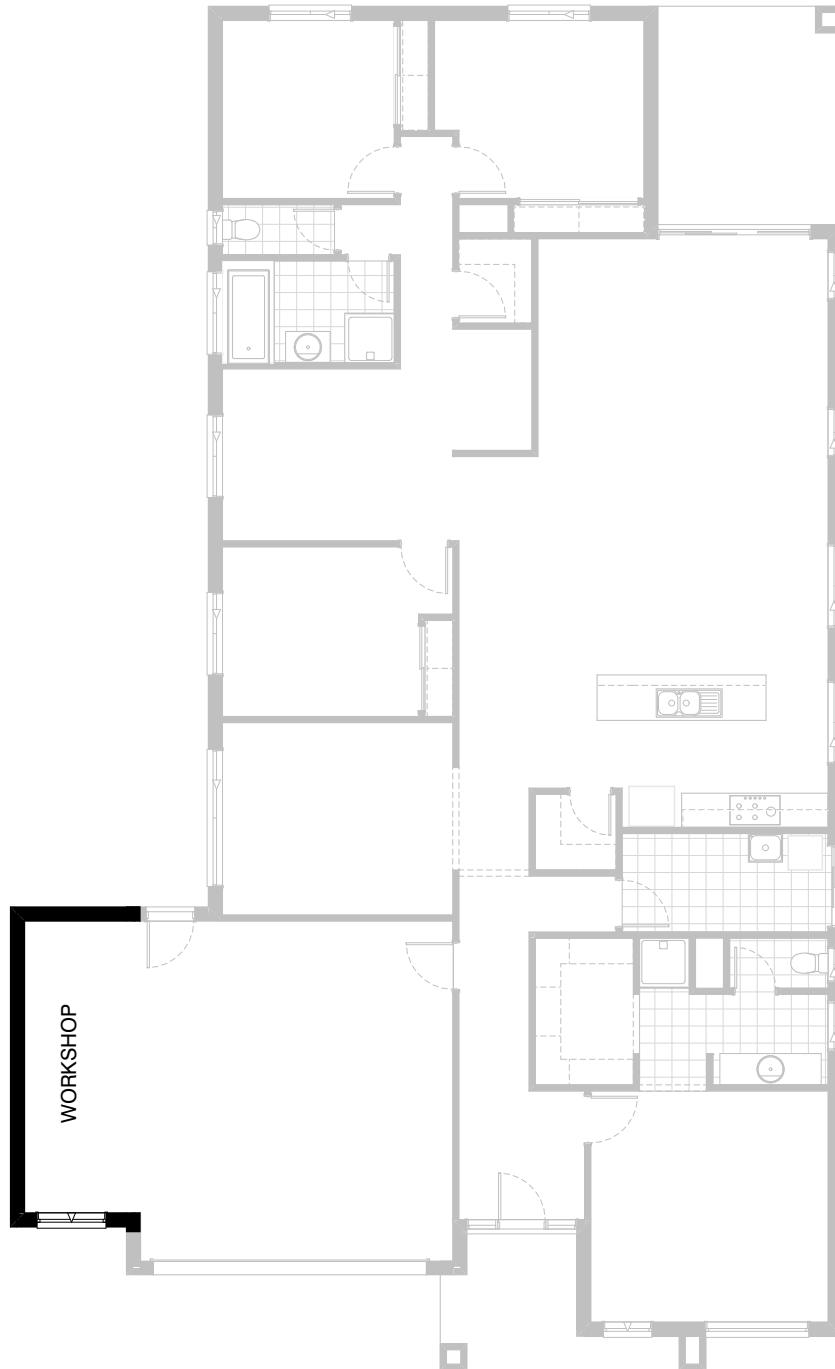


Option G-1

Provide extension to Garage to create additional Storage area.
Increase area by 4.52m².
Increase width by 840mm.

FLOORPLAN OPTIONS

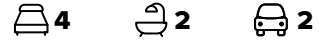
 **4**  **2**  **2**



Option G-2

Provide extension to Garage to create Workshop
area including additional 2057mm x 1210mm
aluminium awning window
Increases area by 11.49².
Increases width by 2040mm.

FLOORPLAN OPTIONS



Option G-3

Provide triple car Garage including additional
Garage door as per colour selection.
Increase width by 3600mm.
Increase area by 23.59m²